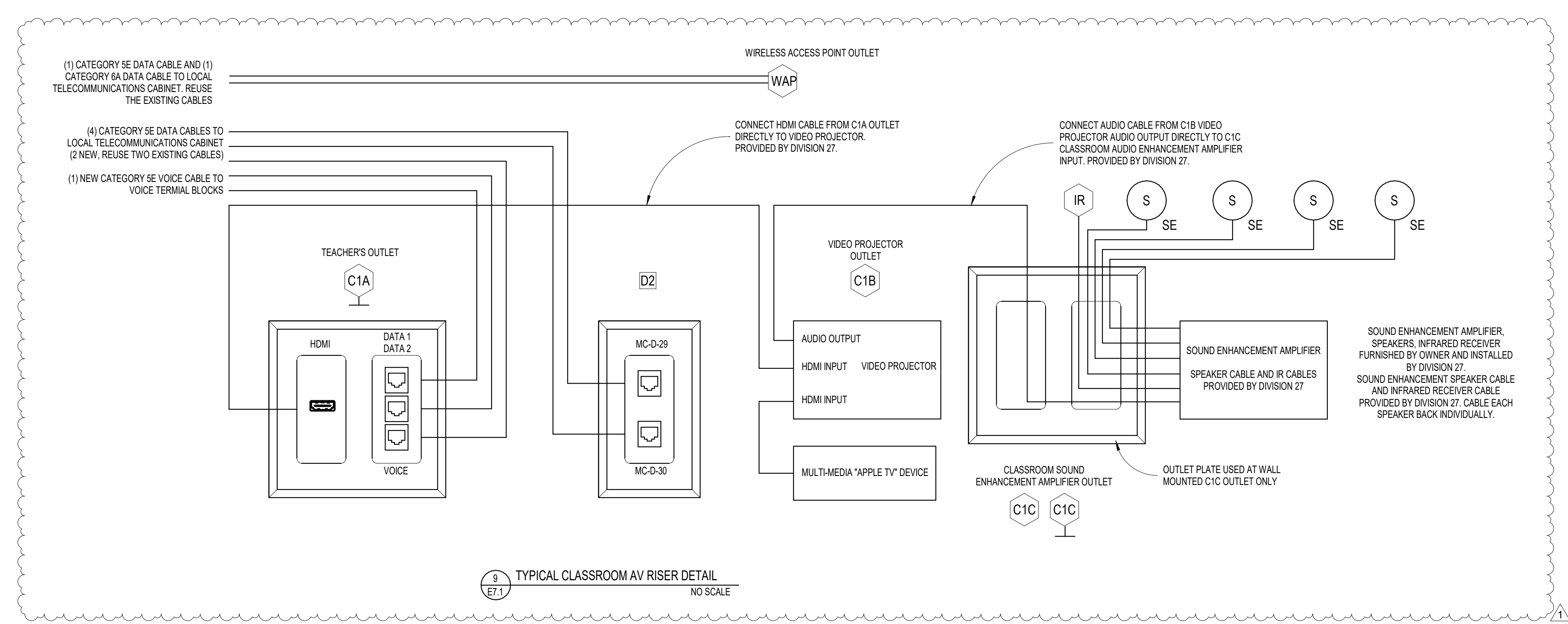
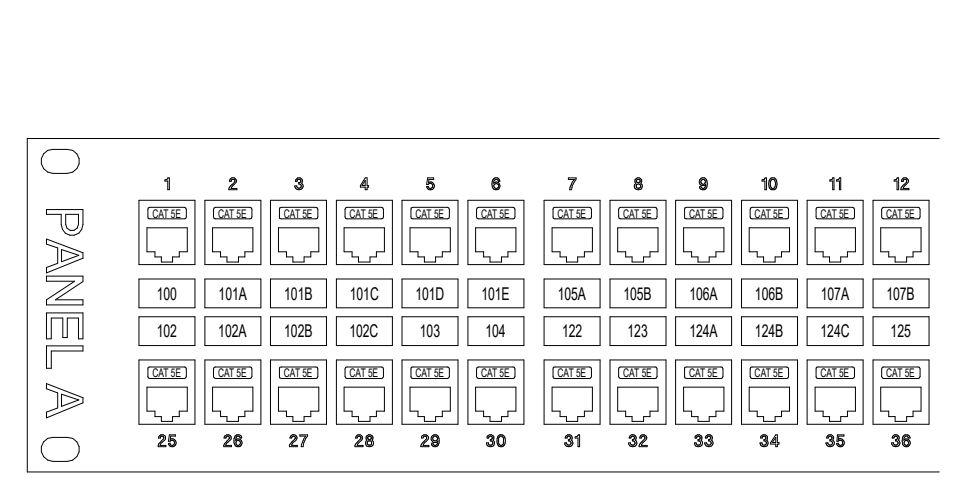
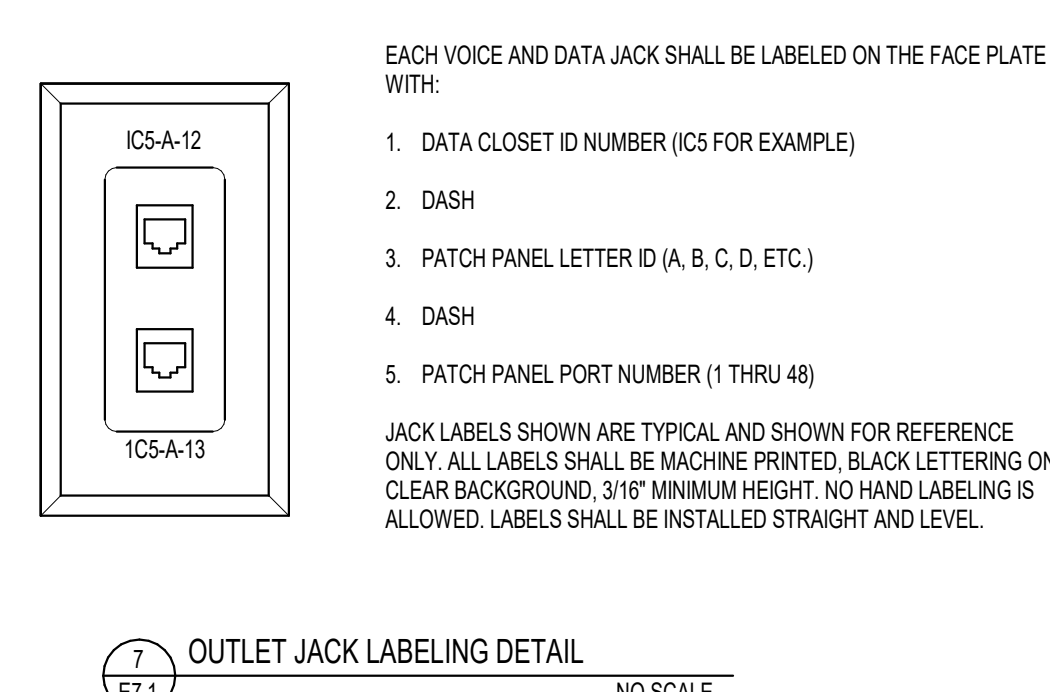
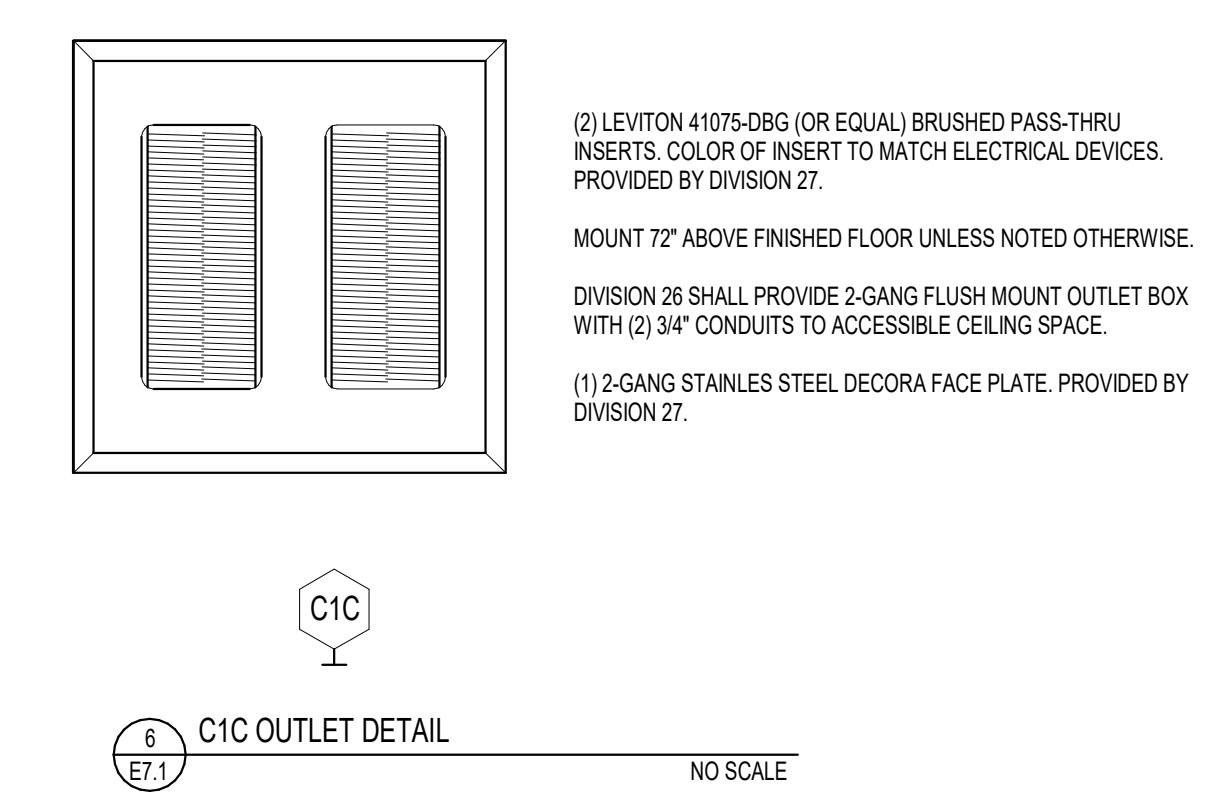
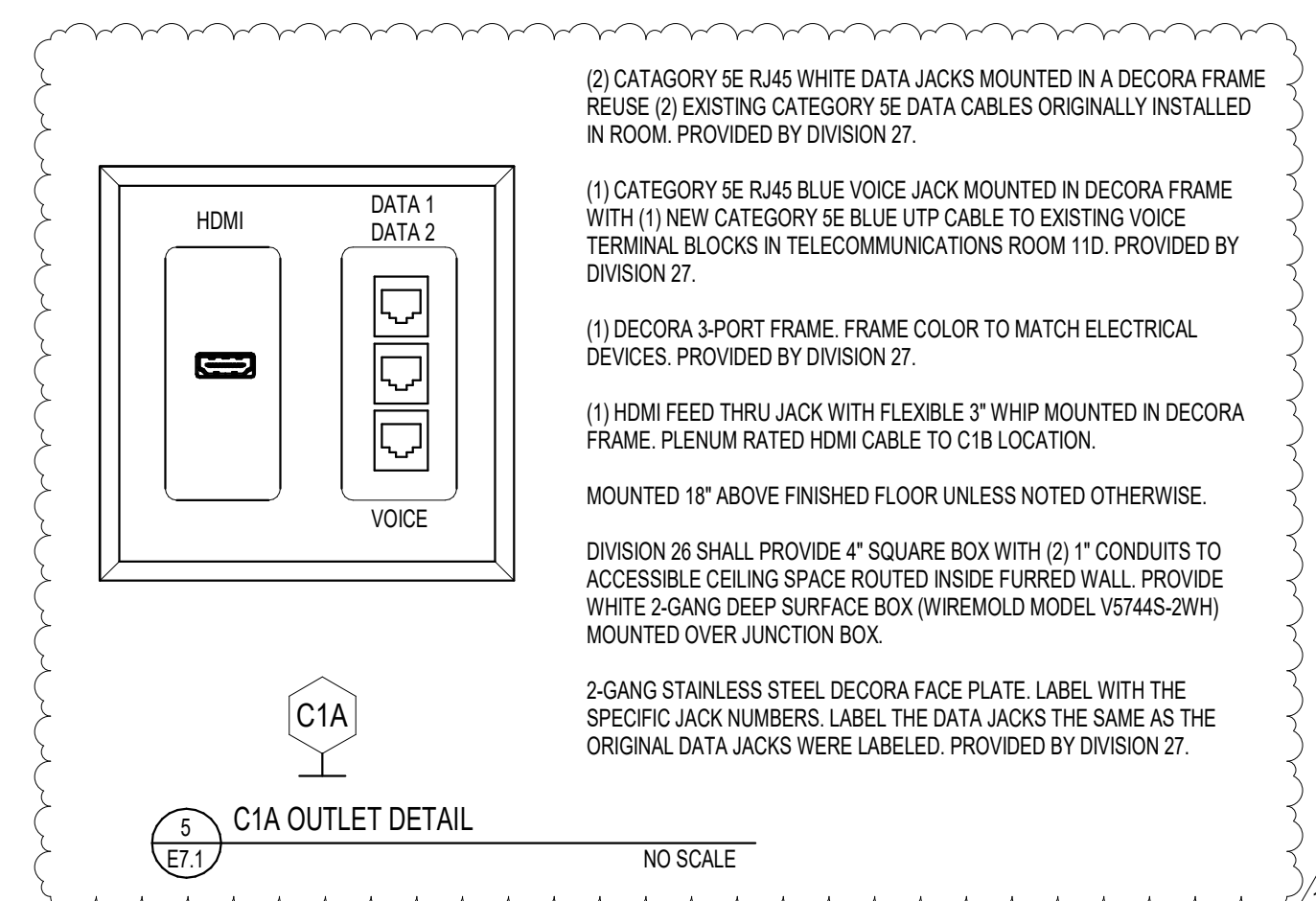
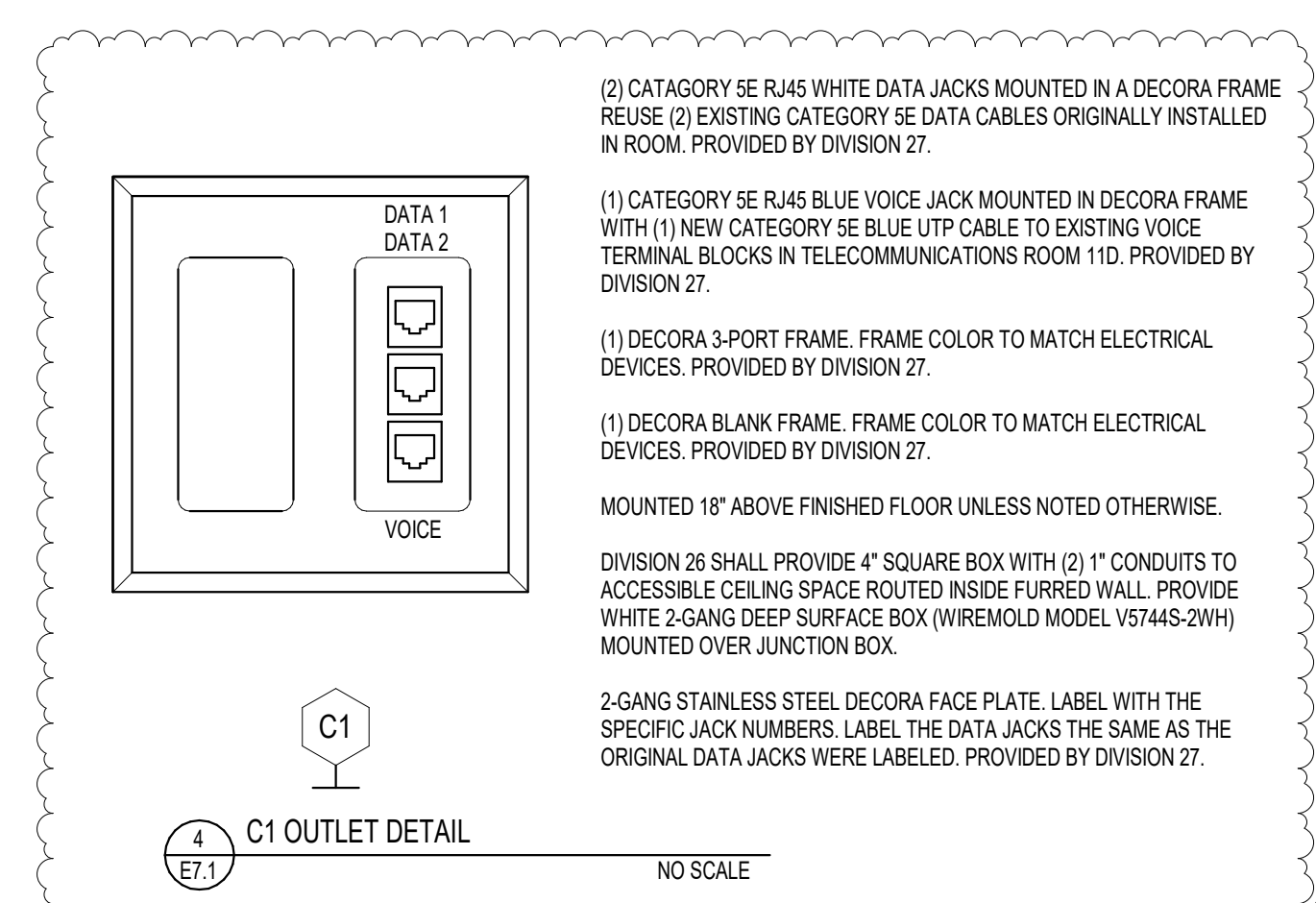
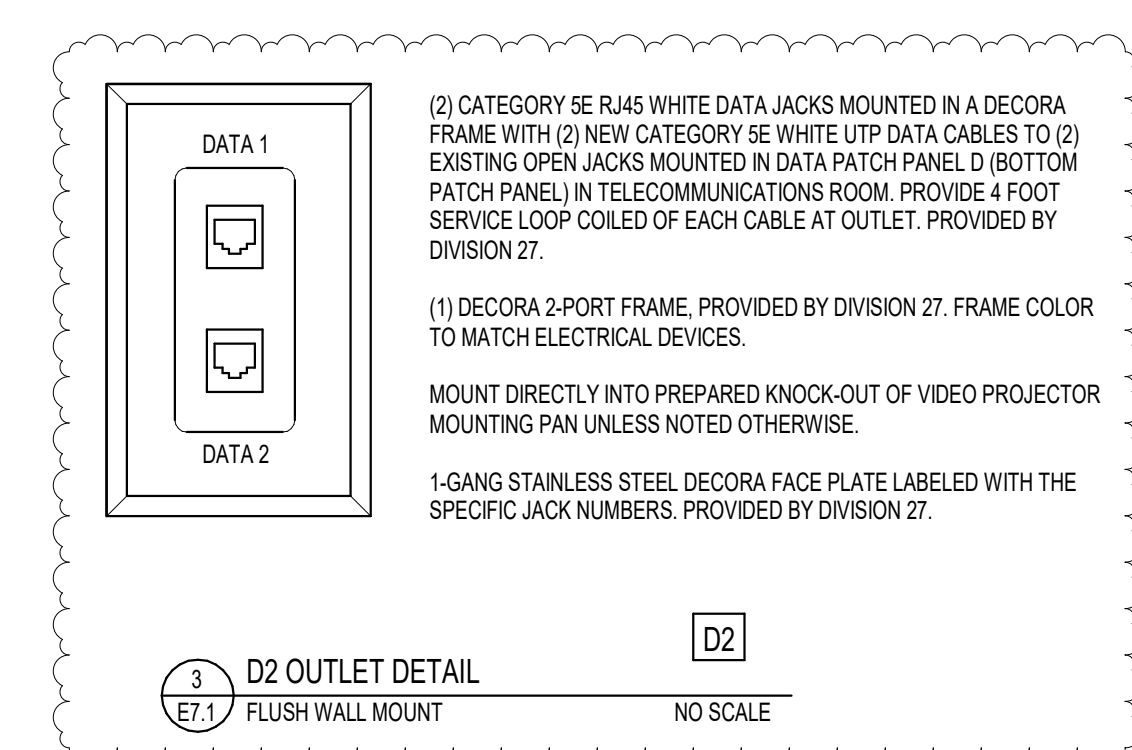
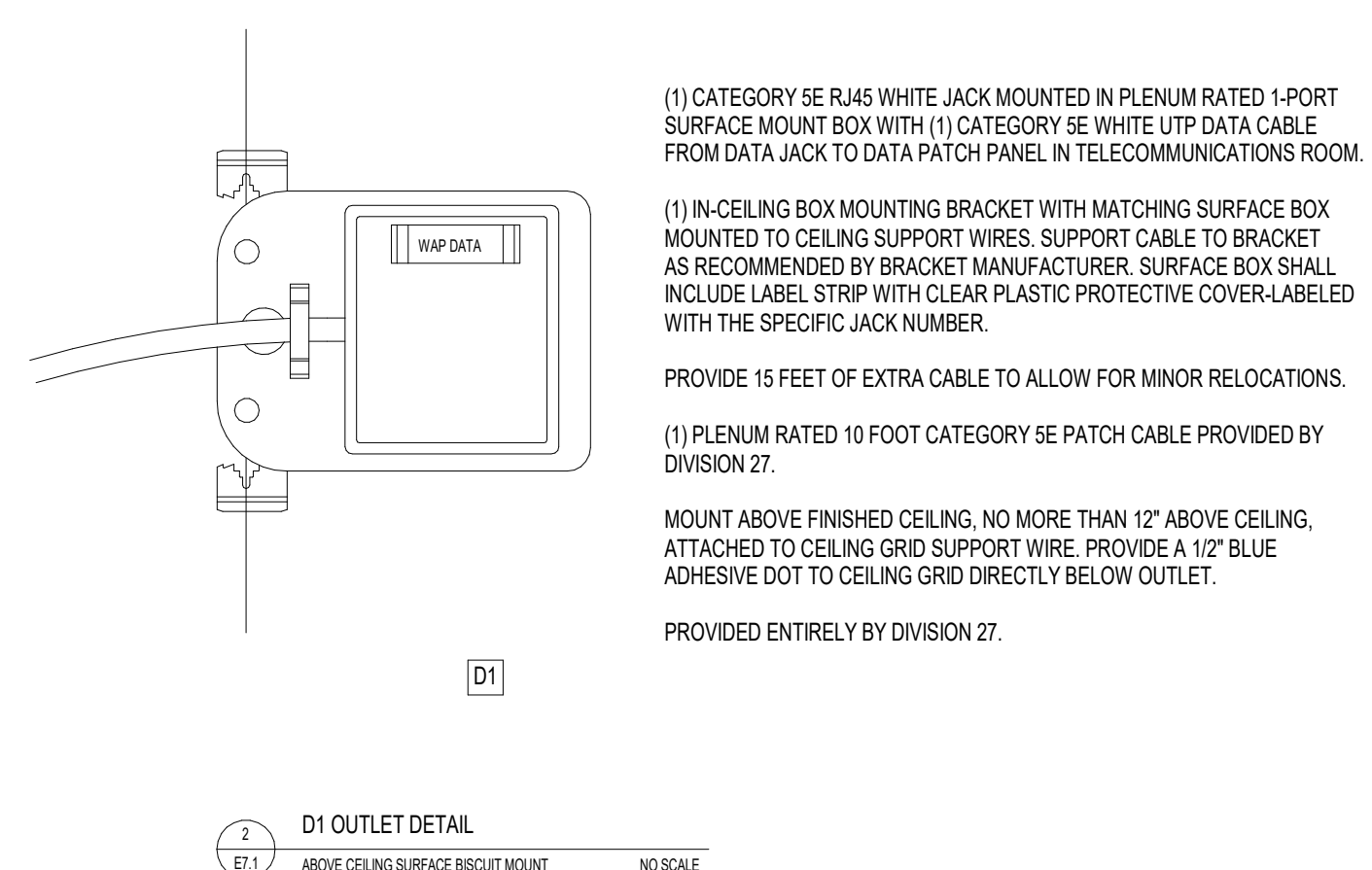
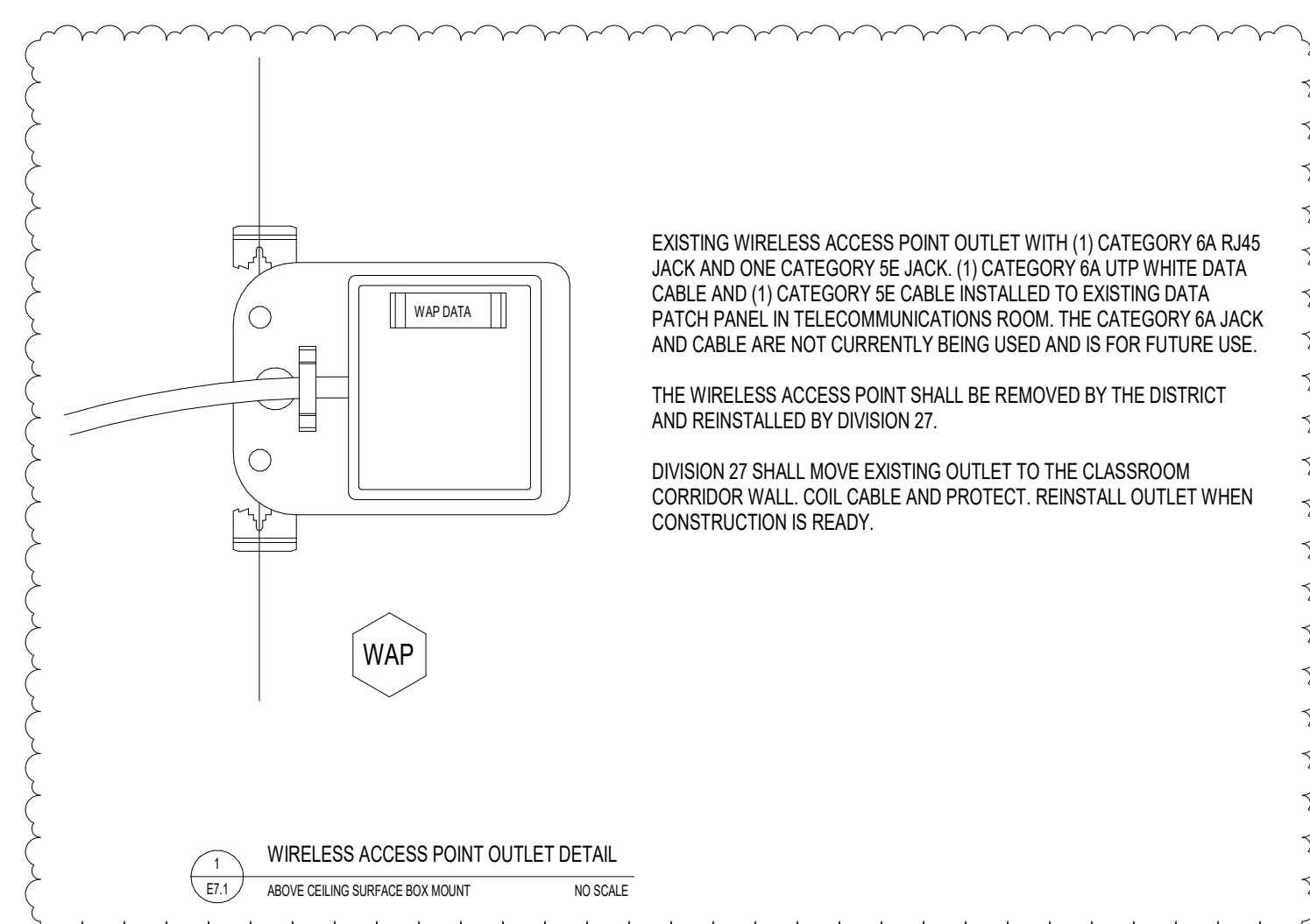


REV NO	DESCRIPTION	DATE
1	Addendum #2	12/17/2021

SYSTEMS SYMBOLS SCHEDULE

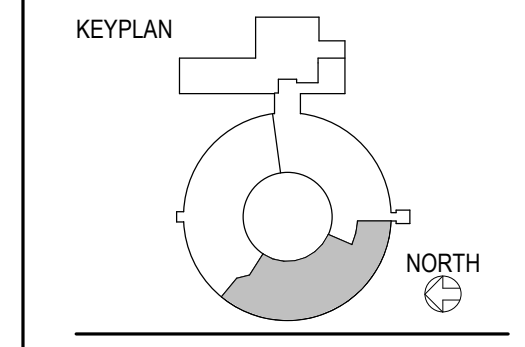
NOTES TO COMMUNICATIONS SYMBOLS SCHEDULE:
1. ALL MOUNTING HEIGHTS ARE TO CENTER OF DEVICE ABOVE FINISHED FLOOR (A.F.F.). MOUNTING HEIGHTS SHOWN ARE TYPICAL AND ARE TO BE OBSERVED UNLESS NOTED OTHERWISE ON THE DRAWINGS.
2. REFER TO OUTLET DETAILS AND SPECIFICATION FOR CONFIGURATION AND DETAILS OF OUTLETS.
3. ALL ROUGH-IN BOXES AND CONDUIT (FLUSH AND SURFACE MOUNTED) PROVIDED BY DIVISION 26.
4. ALL CONDUIT STUBS TO ACCESSIBLE CEILING SHALL INCLUDE BUSHINGS AT THE ENDS OF THE CONDUITS. IF OUTLET IS INSTALLED IN A SPACE WITH NO SUSPENDED CEILING, STUB TO ABOVE BOTTOM OF BAR JOISTS.
5. REFER TO ELECTRICAL SYMBOL SCHEDULE FOR FIRE ALARM SYMBOL DESCRIPTIONS.

SYMBOL	DESCRIPTION	ROUGH-IN REQUIRED	MOUNTING HEIGHT
WAP	TECHNOLOGY OUTLET WITH ONE ORANGE CATEGORY 6A DATA JACK, MOUNTED ABOVE FINISHED CEILING. PROVIDED BY DIVISION 27. SEE OUTLET DETAIL.	NONE	12" ABOVE FINISHED CEILING
D1	TECHNOLOGY OUTLET WITH ONE WHITE DATA JACK, MOUNTED ABOVE FINISHED CEILING. PROVIDED BY DIVISION 27. SEE OUTLET DETAIL.	NONE	12" ABOVE FINISHED CEILING
D2	TECHNOLOGY OUTLET WITH TWO WHITE DATA JACKS, FLUSH MOUNTED IN VIDEO PROJECTOR PAN. PROVIDED BY DIVISION 27. SEE OUTLET DETAIL.	NONE	ON CEILING
C1	TECHNOLOGY OUTLET WITH TWO WHITE DATA JACKS AND ONE BLUE VOICE JACK. PROVIDED BY DIVISION 27. SEE OUTLET DETAIL.	NONE	18"
C1A	TECHNOLOGY OUTLET WITH ONE HDMI INPUT JACK, TWO WHITE DATA JACKS AND ONE BLUE VOICE JACK. PROVIDED BY DIVISION 27. SEE OUTLET DETAIL. PROVIDE HDMI CABLE TO C1B OUTLET.	FLUSH 4" SQUARE BOX WITH (2) 1" CONDUITS ROUTED IN FURRED OUT WALL TO ACCESSIBLE CEILING.	18"
C1B	REPRESENTS THE LOCATION WHERE THE HDMI CABLE FROM THE C1A IS CONNECTED TO THE OWNER PROVIDED VIDEO PROJECTOR CONCEAL CABLE IN PROJECTOR MOUNT POLE. PROVIDE AUDIO CABLE FROM AUDIO OUTPUT OF VIDEO PROJECTOR TO C1C LOCATION.	NONE	ON CEILING
C1C	REPRESENTS THE LOCATION WHERE THE AUDIO CABLE FROM THE VIDEO PROJECTOR IS INSTALLED. PROVIDE SIX FEET OF CABLE COILED IN CABINET FOR CONNECTION TO THE SOUND ENHANCEMENT AMPLIFIER BY THE OWNER. AUDIO CABLE PROVIDED BY DIVISION 27.	NONE	ON CEILING
C1C	TECHNOLOGY OUTLET WHERE THE AUDIO CABLE FROM THE VIDEO PROJECTOR IS INSTALLED. PROVIDE SIX FEET OF CABLE FOR CONNECTION TO THE SOUND ENHANCEMENT AMPLIFIER BY THE OWNER. AUDIO CABLE PROVIDED BY DIVISION 27.	2-GANG OUTLET BOX WITH (2) 3/4" CONDUITS TO ACCESSIBLE CEILING SPACE	72"
E1	SURFACE WALL MOUNTED BATTERY OPERATED CLOCK WITH WIRELESS CORRECTION. PROVIDED BY DIVISION 26.	NONE	96"
E2	FLUSH CEILING MOUNTED SPEAKER ASSEMBLY FOR BUILDING PAGING SYSTEM. PROVIDED BY DIVISION 26.	NONE	CEILING



**CROOKED LAKE
ELEMENTARY SCHOOL**
HVAC Replacement and Deferred
Maintenance - Phase 3
Anoka-Hennepin Schools I.S.D. No. 11
2939 Bunker Lake Blvd NW
Andover, MN 55304

SIGNATURE / SEAL
I hereby certify that this plan, specification, or report was prepared by me or under my direct supervision and that I am a duly licensed Professional Engineer under the laws of the State of Minnesota.
Nicholas Achina
Signature
Nicholas Achina, PE
Typed or printed name
OCTOBER 27TH, 2021
Date
40408
License Number



DRAWN BY
RGE/DB
CHECKED BY
N ACHINA
ISSUED FOR
CONSTRUCTION DOCUMENTS
ISSUE DATE
OCTOBER 27, 2021
SHEET NAME
TECHNOLOGY SYMBOL SCHEDULE AND DETAILS

ATSR PROJECT NO.
19039.2
REVISION NO.
1
SHEET NUMBER