

No.	Name
101	VESTIBULE
102	SUBJECT SPEC.
103	CORRIDOR
103A	SPECIAL CL
104	SPECIAL CL
104A	OFFICE
105	KINDERGARTEN
105A	STORAGE
105B	BOYS TOILET
105C	GIRLS TOILET
106	CLASSROOM
107	CLASSROOM
108	CLASSROOM
108A	STORAGE
108B	GIRLS TOILET
108C	BOYS TOILET
109	SPECIAL CL
109A	CORRIDOR
109B	CORRIDOR
109C	GIRLS TOILET
109D	BOYS TOILET
109E	CUSTODIAN
110	CLASSROOM
110A	CALMING ROOM
110B	LQR
111	CLASSROOM

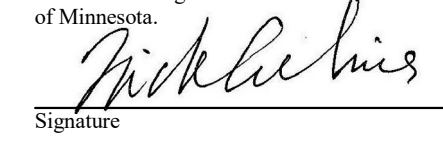
- GENERAL NOTES**
- SEE SHEET E7.1 FOR TECHNOLOGY SYMBOL SCHEDULE AND PLATE DETAILS.
 - UNLESS OTHERWISE NOTED, ALL FIRE ALARM DEVICES SHOWN ARE EXISTING TO BE REMOVED FOR CONSTRUCTION AND REINSTALLED IN SAME LOCATION ON NEW CEILING.
 - CONTRACTOR SHALL RESUPPORT ANY CABLES, WHERE REQUIRED, BEFORE NEW CEILING IS INSTALLED.
 - DATA AND VOICE CABLEING, PAGING SYSTEM CABLEING, FIRE ALARM CABLEING AND BUILDING AUTOMATION CABLEING SHALL BE NEATLY BUNDLED AND ROUTED SEPARATELY FROM EACH OTHER BY DISCIPLINE. TO AVOID CONFLICTS WITH DUCTS, ROUTE CABLES IN OUTSIDE 1/4" OF CORRIDOR. SEPARATE EACH BUNDLE BY A MINIMUM OF 6".
 - WHERE CABLES ARE INSTALLED ABOVE ACCESSIBLE CEILINGS, PROVIDE CABLE HOOKS SPACED 5'-0" ON CENTER.
 - ALL CABLE ROUTED ABOVE ACCESSIBLE CEILINGS SHALL BE PLENUM RATED.
 - ALL FIRE ALARM JUNCTION BOXES SHALL BE LABELED IN RED FIRE ALARM.
 - SPECIFICATION SECTIONS 27 15 00 (DATA), 28 31 10 (FIRE ALARM) AND 29 53 14 (CLOCKS) INCLUDE SPARE DEVICES TO BE PROVIDED. REFER TO THE SPECIFICATION SECTIONS FOR DETAILS.

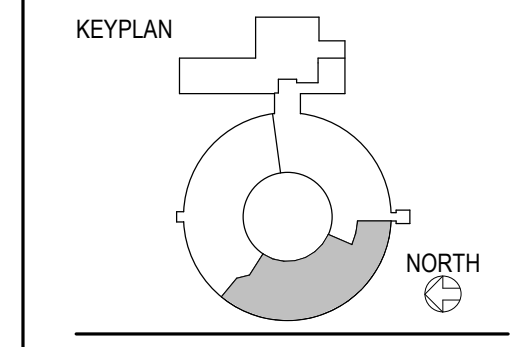
- KEYED SHEET NOTES**
- DIVISION 27 SHALL PROVIDE NEW FLUSH 2X2 LAY-IN CEILING SPEAKER WITH INTEGRATED VOLUME CONTROL, VALCOM MODEL VES228. PROVIDE NEW 16 GAUGE TWISTED PAIR SHIELDED CABLE WITH PLENUM RATED JACKET FROM EACH CLASSROOM SPEAKER INDIVIDUALLY INSTALLED TO EXISTING PAGING HEADEND. CONNECT INTO PAGING SYSTEM HEADEND ELECTRONICS SO THAT EACH CLASSROOM IS AN INDEPENDENT CIRCUIT.
 - DIVISION 28 SHALL PROVIDE BATTERY OPERATED SECONDARY CLOCK WITH WIRELESS CORRECTION AND DISTRICT LOGO PRINTED ON FACE BY CLOCK MANUFACTURER.
 - C18 - DIVISION 27 SHALL PROVIDE HDMI PLENUM RATED CABLE TO VIDEO PROJECTOR FROM C1A OUTLET. ROUTE CABLE DOWN VIDEO PROJECTOR MOUNTING POLE. EXTRA CABLE SHALL BE NEATLY COILED ABOVE CEILING.
 - C1C - DIVISION 27 SHALL PROVIDE PLENUM RATED STEREO PRE-CONNECTED AUDIO CABLE FROM VIDEO PROJECTOR TO AUDIO ENHANCEMENT AMPLIFIER LOCATED INSIDE NEW WALL CABINET. AMPLIFIER SHALL BE MOUNTED HIGH IN CABINET (72"). ROUTE AUDIO CABLE FROM CEILING TO CABINET THROUGH MECHANICAL DUCTPIPE ENCLOSURE AND INTO CABINET. DRILL CONCEALED HOLES AS REQUIRED. COIL SIX FEET OF CABLE INSIDE CABINET. DIVISION 27 SHALL INSTALL AUDIO ENHANCEMENT AMPLIFIER REMOVED DURING CONSTRUCTION.
 - MOUNT D2 OUTLET IN VIDEO PROJECTOR MOUNT PAN.
 - DIVISION 28 SHALL PROVIDE FLUSH WALL MOUNTED 4" SQUARE JUNCTION BOX IN FINISHED OUT WALL WITH 2" CONDUITS TO ACCESSIBLE CEILING SPACE. PROVIDE DEEP SURFACE WHITE 2-GANG BOX, WIREMOLD 6754MS-2WH, MOUNTED OVER JUNCTION BOX. DIVISION 27 SHALL REINSTALL THE EXISTING ONE VOICE CABLE AND TWO DATA CABLES THAT WERE REMOVED AND COILED AT CORRIDOR WALL DURING DEMOLITION. PROVIDE NEW WALL PLATE AND CATEGORY 5E JACKS AND TERMINATE THE CABLES ONTO THE JACKS. PROVIDE WRITTEN DOCUMENTATION TO THE OWNER THAT THE VOICE AND DATA CABLES ARE INSTALLED AND OPERATE PROPERLY IMMEDIATELY AFTER INSTALLATION AT THE WEEKLY CONSTRUCTION MEETING.
 - CONNECT NEW SPEAKER TO EXISTING CORRIDOR SPEAKERS AND TEST THAT ALL CORRIDOR SPEAKERS ARE WORKING. PROVIDE NEW CABLES FOR NEW SPEAKERS.
 - LOCATION OF EXISTING DATA EQUIPMENT RACK AND TELEPHONE TERMINAL BLOCKS (WALL MOUNTED).
 - DIVISION 27 SHALL INSTALL CLASSROOM SOUND ENHANCEMENT SYSTEM COMPONENTS FURNISHED BY THE OWNER. THESE COMPONENTS WERE REMOVED FROM THE CLASSROOM BY THE OWNER PRIOR TO DEMOLITION AND WERE TESTED TO BE OPERATIONAL AT THAT TIME. MOUNT SOUND ENHANCEMENT AMPLIFIER ON TOP SHELF OF CABINET AT C1C LOCATION. PLUG INTO POWER RECEPTACLE. INSTALL FOUR FLUSH CEILING MOUNTED SOUND ENHANCEMENT SPEAKERS (TYPE SE) EVENLY SPACED IN CLASSROOM. PROVIDE NEW SPEAKER CABLE (16 GAUGE STRANDED TWISTED PAIR PLENUM JACKETED) INDIVIDUALLY FROM EACH SPEAKER TO SOUND ENHANCEMENT AMPLIFIER AND CONNECT TO AMPLIFIER. INSTALL CEILING MOUNTED INFRARED RECEIVER IN CENTER OF CLASSROOM AND PROVIDE NEW PLENUM RATED CATEGORY 5E PATCH CORD (WITH FLAT PLUGS) FROM IR RECEIVER TO SOUND ENHANCEMENT AMPLIFIER AND CONNECT. MOUNT SOUND ENHANCEMENT MICROPHONE ASSEMBLY ON TEACHER'S DESK. TEST FOR OPERATION OF MICROPHONE, AMPLIFIER AND EACH SPEAKER. PROVIDE WRITTEN DOCUMENTATION TO THE OWNER THAT EACH SYSTEM IS INSTALLED AND OPERATED PROPERLY IMMEDIATELY AFTER INSTALLATION AT THE WEEKLY CONSTRUCTION MEETING.
 - PROVIDE DUCT SMOKE DETECTOR, MOUNTED IN RETURN AIR DUCT. CONNECT TO CONTROL UNIT SHOWN. VERIFY EXACT LOCATION WITH DIVISION 23 CONTRACTOR.
 - DIVISION 27 SHALL REINSTALL THE EXISTING WIRELESS ACCESS POINT CABLES (ONE CATEGORY 6A CABLE AND ONE CATEGORY 5E CABLE IN BISCUIT JACK) THAT WERE RELOCATED TO CORRIDOR WALL AND COILED DURING DEMOLITION. DIVISION 27 SHALL INSTALL CLASSROOM WIRELESS ACCESS POINT (WAP) AND ASSOCIATED MOUNTING DEVICE FURNISHED BY OWNER. THE WAP WAS REMOVED FROM THE CLASSROOM BY THE OWNER PRIOR TO DEMOLITION AND WAS TESTED TO BE OPERATIONAL AT THAT TIME. MOUNT WAP IN CENTER OF CLASSROOM AND CONNECT TO WAP CATEGORY 6E JACK WITH CATEGORY 5E PATCH CORD FURNISHED BY THE OWNER. MOUNT WAP IN A PROFESSIONAL MANNER. CEILING TILES AROUND WAP SHALL LAY FLAT ON CEILING GRID. CABLE TO WAP IS CONCEALED AND WAP IS FLAT AND LEVEL WITH CEILING. PROVIDE WRITTEN DOCUMENTATION TO THE OWNER THAT THE WAP IS INSTALLED AND OPERATES PROPERLY IMMEDIATELY AFTER INSTALLATION AT THE WEEKLY CONSTRUCTION MEETING.
 - ROUTE ALL VOICE AND DATA CABLE ON INTERIOR WALL OF CORRIDOR ABOVE FINISHED CEILING. USE J-HOOKS ON 5 FOOT INTERVALS MOUNTED TO WALL STRUCTURE TO SUPPORT CABLEING.
 - LOCATION OF EXISTING BUILDING PAGING SYSTEM HEADEND.
 - DIVISION 27 SHALL INSTALL VIDEO PROJECTOR ASSEMBLY WITH APPLE TV DEVICE FURNISHED BY OWNER. THE VIDEO PROJECTOR ASSEMBLY WAS REMOVED FROM THE CLASSROOM BY THE OWNER PRIOR TO DEMOLITION AND WAS TESTED TO BE OPERATIONAL AT THAT TIME. MAKE ALL CONNECTIONS (HDMI CABLE FROM C1A OUTLET, AUDIO CABLE TO C1C OUTLET, POWER AND APPLE TV). THE PROJECTOR MOUNT SHALL BE ADJUSTED TO FULL THE ENTIRE PROJECTION SCREEN. PROVIDE WRITTEN DOCUMENTATION TO THE OWNER THAT THE PROJECTOR ASSEMBLY IS INSTALLED AND OPERATED PROPERLY IMMEDIATELY AFTER INSTALLATION AT THE WEEKLY CONSTRUCTION MEETING.

REVISIONS

REV NO	DESCRIPTION	DATE
1	Addendum #2	12/17/2021
2	Addendum #3	12/29/2021
3	Addendum #4	01/04/2022

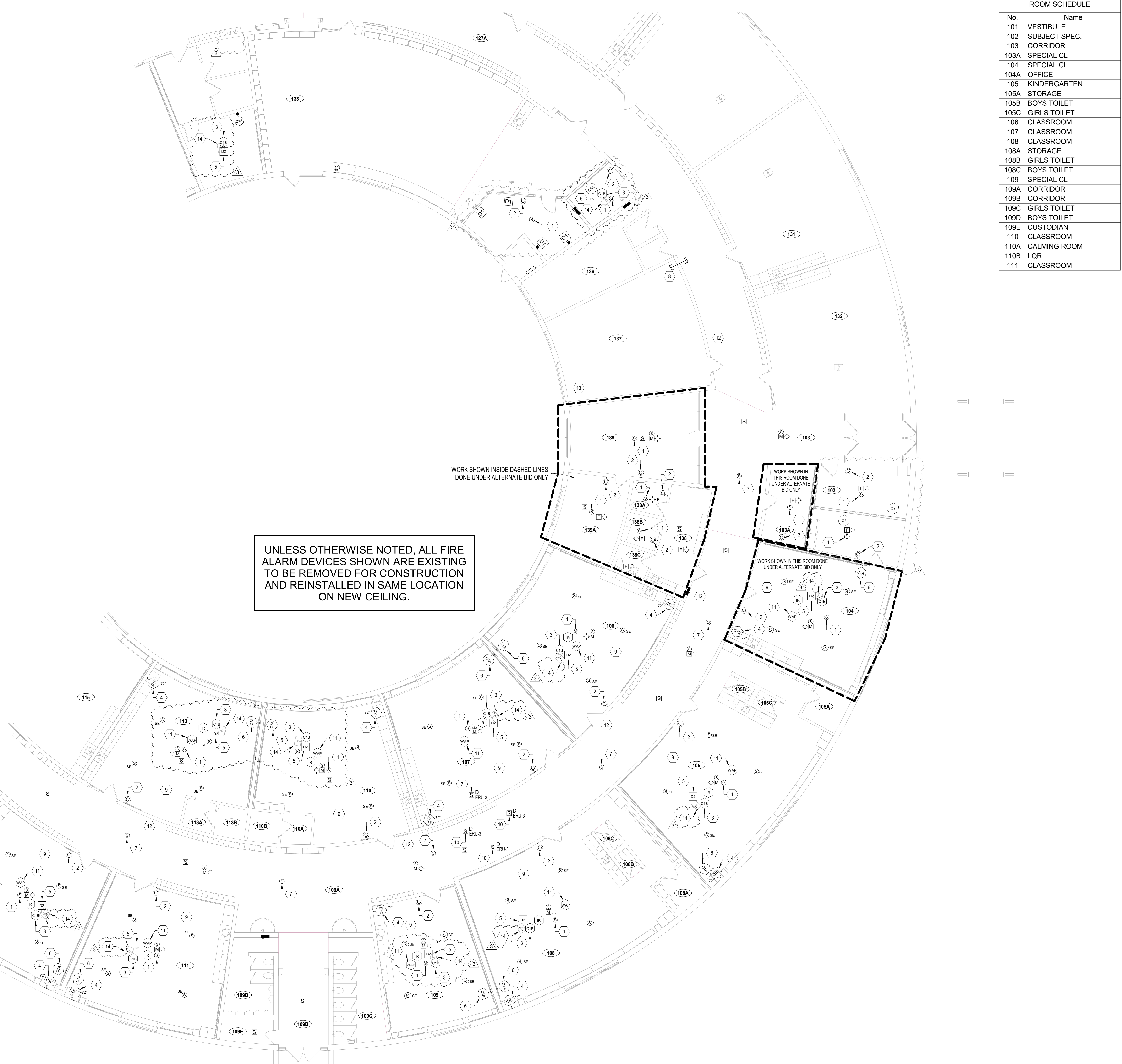
**CROOKED LAKE
 ELEMENTARY SCHOOL**
 HVAC Replacement and Deferred
 Maintenance - Phase 3
 Anoka-Hennepin Schools I.S.D. No. 11
 2939 Blunker Lake Blvd NW
 Andover, MN 55304

SIGNATURE / SEAL
 I hereby certify that this plan, specification, or report was prepared by me or under my direct supervision and that I am a duly licensed Professional Engineer under the laws of the State of Minnesota.

 Signature
 Nicholas Achina, PE
 Type or printed name
 OCTOBER 27TH, 2021
 Date
 40403
 License Number



DRAWN BY
 RGE/DB
 CHECKED BY
 N ACHINA
 ISSUED FOR
 CONSTRUCTION
 DOCUMENTS
 ISSUE DATE
 OCTOBER 27, 2021
 SHEET NAME
 SYSTEMS FLOOR
 PLAN

ATSR PROJECT NO.
 19039.2
 REVISION NO.
 3
 SHEET NUMBER



UNLESS OTHERWISE NOTED, ALL FIRE ALARM DEVICES SHOWN ARE EXISTING TO BE REMOVED FOR CONSTRUCTION AND REINSTALLED IN SAME LOCATION ON NEW CEILING.

WORK SHOWN INSIDE DASHED LINES DONE UNDER ALTERNATE BID ONLY

WORK SHOWN IN THIS ROOM DONE UNDER ALTERNATE BID ONLY

WORK SHOWN IN THIS ROOM DONE UNDER ALTERNATE BID ONLY