

ROOM SCHEDULE	
No.	Name
101	SPEECH
102	SUBJECT SPEC.
103	CORRIDOR
103A	SPECIAL CL
104	SPECIAL CL
104A	OFFICE
105	KINDERGARTEN
105A	STORAGE
105B	BOYS TOILET
105C	GIRLS TOILET
106	CLASSROOM
107	CLASSROOM
108	CLASSROOM
108A	STORAGE
108B	GIRLS TOILET
108C	BOYS TOILET
109	SPECIAL CL
109A	CORRIDOR
109B	CORRIDOR
109C	GIRLS TOILET
109D	BOYS TOILET
109E	CUSTODIAN
110	CLASSROOM
110A	CALMING ROOM
110B	LQR
111	CLASSROOM

**TYPICAL POWER TAG**

RECEPTACLE TYPE: GFVI, L1041  
 MOUNTING HEIGHT: IF NO HEIGHT NOTED THEN RECEPTACLE IS AT 18" PANEL/CIRCUIT NUMBER

**GENERAL NOTES**

A. ENGRAVE THE PANEL NAME AND CIRCUIT NUMBER FEEDING ALL RECEPTACLES ON THE FACE OF THE COVERPLATE.

B. DEDICATED NEUTRALS FOR EACH BRANCH CIRCUIT. MINIMUM OF 3/4" CONDUIT FOR ALL CIRCUITS. 1/2" CONDUIT MAY BE USED FOR END OF RUN TO SINGLE DEVICE.

C. PROVIDE PANEL NAME AND CIRCUIT NUMBERS, OF ALL CIRCUITS CONTAINED IN JUNCTION BOX, ON THE FRONT OF ALL JUNCTION BOX COVERS.

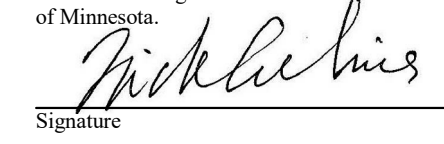
**KEYED SHEET NOTES**

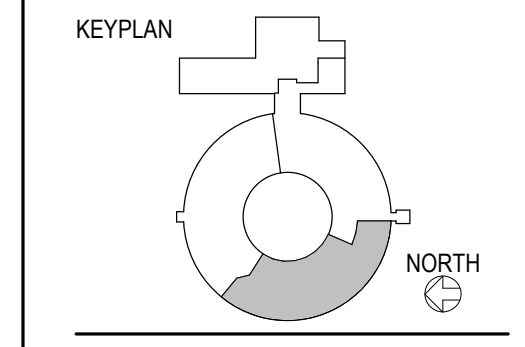
- PROVIDE TAMPER-RESISTANT RECEPTACLES AND CONNECT TO EXISTING RECEPTACLE CIRCUIT IN ROOM.
- PROVIDE RECEPTACLE SURFACE MOUNTED IN BACK OF CABINET ABOVE TOP SHELF AT 72". CONNECT TO EXISTING RECEPTACLE CIRCUIT IN ROOM.
- COMPUTER CHARGING CART - ROUTE 1/2" C-2 #12 & #12 GR TO A NEW 20A 1P BREAKER IN PANEL L-108.
- COMPUTER CHARGING CART - ROUTE 1/2" C-2 #12 & #12 GR TO A NEW 20A 1P BREAKER IN PANEL L-109.
- COMPUTER CHARGING CART - ROUTE 1/2" C-2 #12 & #12 GR TO A NEW 20A 1P BREAKER IN PANEL L-108.
- PANDUIT SURFACE MOUNTED RIGHT ABOVE BACKPLASH. ROUTE CONDUIT IN FURRED OUT WALL AND FEED PANDUIT FROM END. CONNECT TO EXISTING RECEPTACLE CIRCUIT IN ROOM.
- EXISTING RECEPTACLES TO BE REPLACED WITH NEW TAMPER-PROOF RECEPTACLES.
- EXISTING PROJECTOR MOUNTING PLATE AND RECEPTACLE RELOCATED HERE. EXTEND/MODIFY CIRCUITING AS REQUIRED.
- PROVIDE DUPLEX RECEPTACLE FLUSH MOUNTED IN PROJECTOR MOUNTING PLATE FURNISHED BY OWNER. CONNECT TO EXISTING RECEPTACLE CIRCUIT IN ROOM.
- DOOR PUSH PADDLE TO BE RELOCATED HERE. SEE NOTE 33 ON SHEET ED.1.
- COMPUTER CHARGING CART - ROUTE 1/2" C-2 #12 & #12 GR TO A NEW 20A 1P BREAKER IN PANEL L-110. TYPICAL OF 4.
- APPROXIMATE LOCATION OF EXISTING PEDESTAL MOUNTED RECEPTACLE. REMOVE RECEPTACLE AND MAKE CONNECTION AS REQUIRED TO OWNER'S OFFICE FURNITURE. PROVIDE NEW BLANK COVER.
- MOUNT IN VERTICAL PANDUIT.
- EXISTING RECEPTACLE LOCATED IN TOE SPACE OF CASEWORK SHALL BE DISCONNECTED AND REMOVED FOR CONSTRUCTION. REINSTALL IN TOE KICK OF NEW CASEWORK. REPLACE RECEPTACLE WITH TAMPER-PROOF RECEPTACLE.
- MOUNT IN VERTICAL PANDUIT. CONNECT TO EXISTING RECEPTACLE CIRCUIT IN ROOM.
- FLUSH MOUNT RECEPTACLE HORIZONTALLY IN TOE SPACE OF BENCH.
- PROVIDE DUPLEX RECEPTACLE FLUSH MOUNTED IN CUT-OUT PROVIDED IN PROJECTOR MOUNTING PLATE. CONNECT TO EXISTING RECEPTACLE CIRCUIT IN ROOM. VERIFY EXACT LOCATION OF PROJECTOR WITH OWNER.
- RECEPTACLE REINSTALLED IN TOE SPACE OF NEW CASEWORK. SEE NOTE 48 ON SHEET ED.1.
- PROVIDE DUPLEX RECEPTACLE FLUSH MOUNTED IN TOE SPACE OF NEW CASEWORK. CONNECT TO SAME CIRCUIT AS RECEPTACLE AT NOTE 18.

**REVISIONS**

REV NO	DESCRIPTION	DATE
1	Addendum #2	12/17/2021
2	Addendum #3	12/29/2021

**CROOKED LAKE ELEMENTARY SCHOOL**  
 HVAC Replacement and Deferred Maintenance - Phase 3  
 Anoka-Hennepin Schools I.S.D. No. 11  
 2939 Bunker Lake Blvd NW  
 Andover, MN 55304

**SIGNATURE / SEAL**  
 I hereby certify that this plan, specification, or report was prepared by me or under my direct supervision and that I am a duly licensed Professional Engineer under the laws of the State of Minnesota.  
  
 Signature: **Nicholas Achina, PE**  
 Typed or printed name: **OCTOBER 27TH, 2021**  
 Date: **40408**  
 License Number



**DRAWN BY**  
**RGE**

**CHECKED BY**  
**N ACHINA**

**ISSUED FOR**  
**CONSTRUCTION DOCUMENTS**

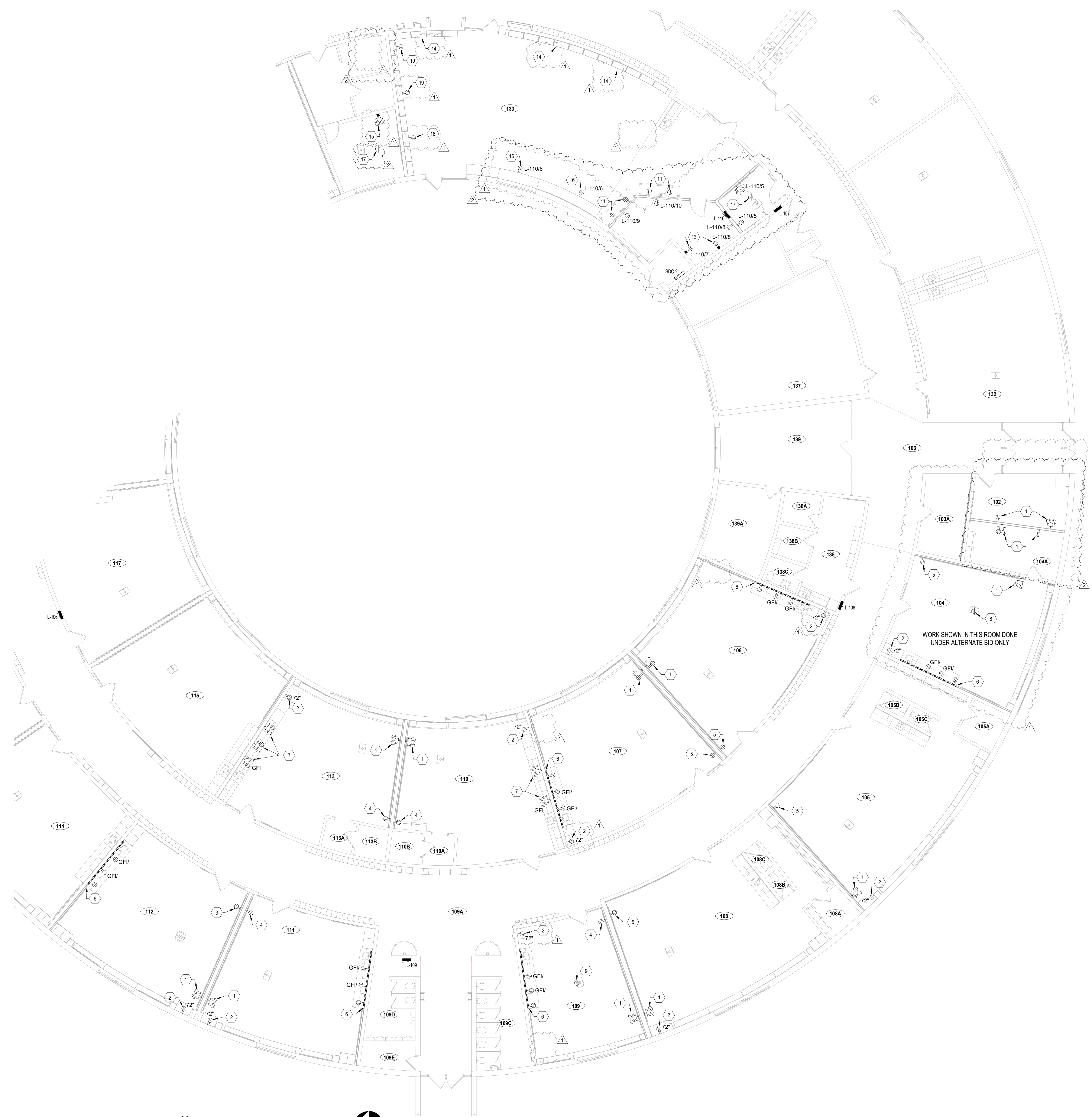
**ISSUE DATE**  
**OCTOBER 27, 2021**

**SHEET NAME**  
**POWER PLAN**

ATSR PROJECT NO.  
**19039.2**

REVISION NO.  
**2**

SHEET NUMBER



**1 POWER PLAN**  
**E3.1**  
 1/8" = 1'-0"  
