


ROOM NO.	ROOM NAME
101	SPEECH
103	CORRIDOR
103A	SPECIAL CL
104	SPECIAL CL
104A	OFFICE
105	KINDERGARTEN
105A	STORAGE
105B	BOYS TOILET
105C	GIRLS TOILET
106	GIRLS TOILET
107	CLASSROOM
108	KINDERGARTEN
108A	STORAGE
108B	GIRLS TOILET
108C	BOYS TOILET
109	SPECIAL CL
109A	CORRIDOR
109B	CORRIDOR
109C	GIRLS TOILET
109D	BOYS TOILET
109E	CUSTODIAN
110	CLASSROOM
110A	CALMING ROOM
110B	LOR
111	CLASSROOM
112	CLASSROOM
113	CLASSROOM
113A	CALMING ROOM
113B	LOR
114	CLASSROOM
115	CLASSROOM
116	CLASSROOM
117	WORK/STORAGE
118	NURSE
118A	COI ROOM
118B	COI ROOM
118C	TOILET
119	GENERAL OFFICE
119A	PRINCIPAL

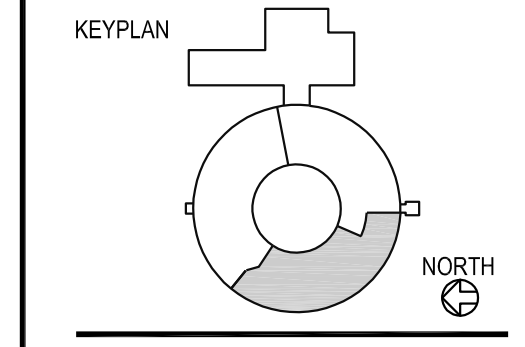
REVISIONS

1	Addendum #2	12/17/2021
---	-------------	------------

HVAC Replacement and Deferred Maintenance - Phase 3
CROOKED LAKE ELEMENTARY SCHOOL
 Anoka-Hennepin Schools I.S.D. No. 11
 2939 Bunker Lake Blvd NW
 Andover, MN 55304

SIGNATURE / SEAL
 I hereby certify that this plan, specification, or report was prepared by me or under my direct supervision and that I am a duly licensed Professional Engineer under the laws of the State of Minnesota.


SIGNATURE
 Blayne Parkos, PE
 TYPED OR PRINTED NAME
 October 27, 2021
 DATE
 46630
 LICENSE NUMBER



DRAWN BY
 TMSO / GEG
 CHECKED BY
 BJP / GEG

ISSUED FOR
 CONSTRUCTION DOCUMENTS
 ISSUE DATE
 OCTOBER 27, 2021
 SHEET NAME

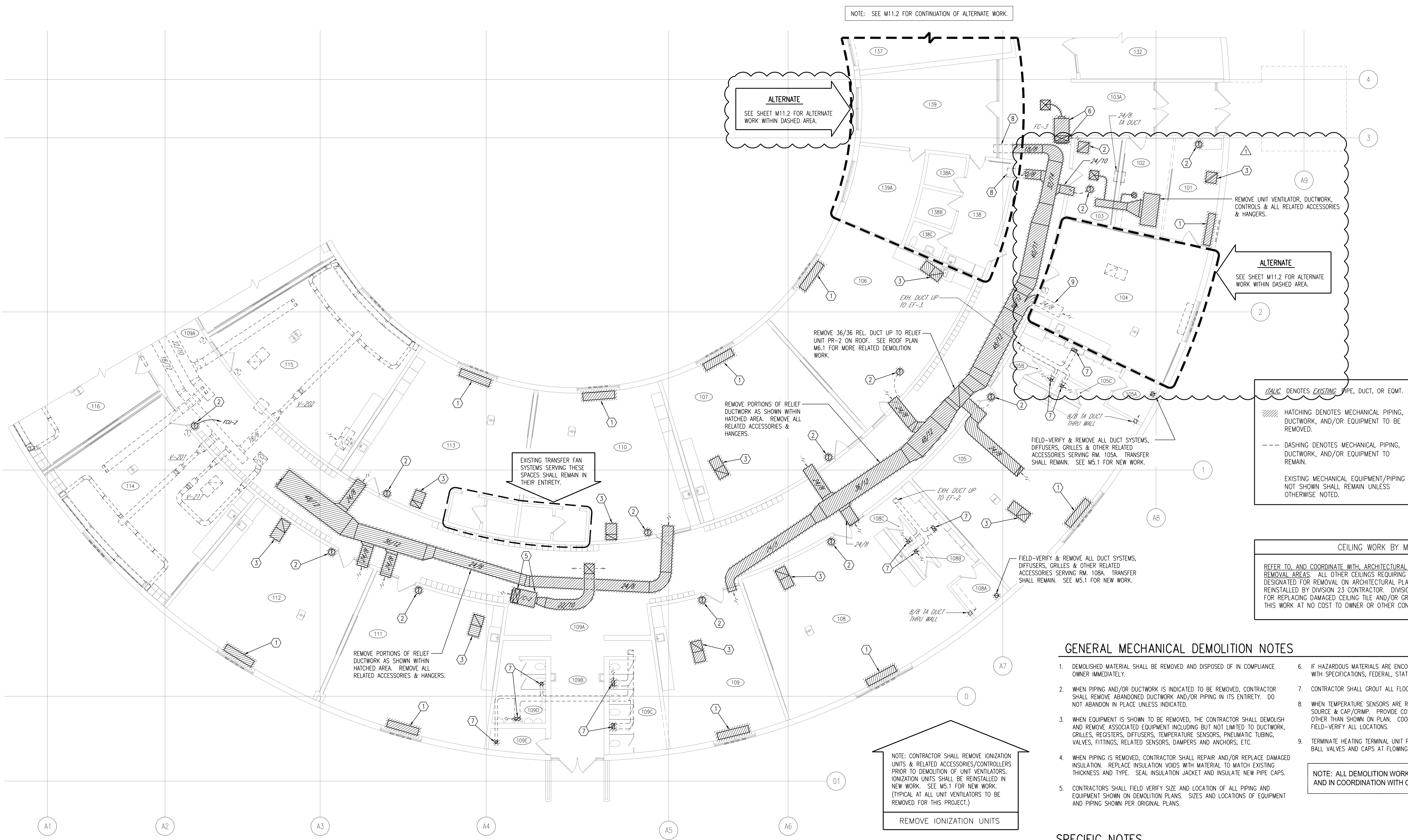
VENTILATION DEMOLITION PLAN

ATSR PROJECT NO.
 19039.2

REVISION NO.
 1

SHEET NUMBER

MD5.1



ALTERNATE
 SEE SHEET M11.2 FOR ALTERNATE WORK WITHIN DASHED AREA.

ALTERNATE
 SEE SHEET M11.2 FOR ALTERNATE WORK WITHIN DASHED AREA.

ITALIC DENOTES EXISTING PIPE, DUCT, OR EQMT.
 HATCHING DENOTES MECHANICAL PIPING, DUCTWORK, AND/OR EQUIPMENT TO BE REMOVED.
 DASHING DENOTES MECHANICAL PIPING, DUCTWORK, AND/OR EQUIPMENT TO REMAIN.
 EXISTING MECHANICAL EQUIPMENT/PIPING NOT SHOWN SHALL REMAIN UNLESS OTHERWISE NOTED.

CEILING WORK BY MECHANICAL
 REFER TO AND COORDINATE WITH ARCHITECTURAL DEMOLITION PLANS FOR CEILING REMOVAL AREAS. ALL OTHER CEILINGS REQUIRING REMOVAL, WHICH ARE NOT DESIGNATED FOR REMOVAL ON ARCHITECTURAL PLANS, SHALL BE REMOVED AND REINSTALLED BY DIVISION 23 CONTRACTOR. DIVISION 23 CONTRACTOR IS RESPONSIBLE FOR REPLACING DAMAGED CEILING TILE AND/OR GRID COMPONENTS OCCURRING DURING THIS WORK AT NO COST TO OWNER OR OTHER CONTRACTOR.

GENERAL MECHANICAL DEMOLITION NOTES

- DEMOLISHED MATERIAL SHALL BE REMOVED AND DISPOSED OF IN COMPLIANCE WITH SPECIFICATIONS, FEDERAL, STATE AND LOCAL CODES.
- IF HAZARDOUS MATERIALS ARE ENCOUNTERED, DO NOT PROCEED, BUT NOTIFY OWNER IMMEDIATELY.
- CONTRACTOR SHALL GROUT ALL FLOOR OPENINGS THAT ARE NOT TO BE REUSED.
- WHEN PIPING AND/OR DUCTWORK IS INDICATED TO BE REMOVED, CONTRACTOR SHALL REMOVE ABANDONED DUCTWORK AND/OR PIPING IN ITS ENTIRETY. DO NOT ABANDON IN PLACE UNLESS INDICATED.
- WHEN TEMPERATURE SENSORS ARE REMOVED, REMOVE RELATED AIR LINES/WIRING SOURCE & CAP/CRIMP. PROVIDE COVER PLATE WHERE NEW SENSOR LOCATION IS OTHER THAN SHOWN ON PLAN. COORDINATE WITH NEW WORK DRAWINGS. FIELD-VERIFY ALL LOCATIONS.
- WHEN EQUIPMENT IS SHOWN TO BE REMOVED, THE CONTRACTOR SHALL DEMOLISH AND REMOVE ASSOCIATED EQUIPMENT INCLUDING BUT NOT LIMITED TO DUCTWORK, GRILLES, REGISTERS, DIFFUSERS, TEMPERATURE SENSORS, PNEUMATIC TUBING, VALVES, FITTINGS, RELATED SENSORS, DAMPERS AND ANCHORS, ETC.
- TERMINATE HEATING TERMINAL UNIT PIPING REMOVED UNDER THIS PROJECT WITH BALL VALVES AND CAPS AT FLOWING MAIN. (TYPICAL)
- WHEN PIPING IS REMOVED, CONTRACTOR SHALL REPAIR AND/OR REPLACE DAMAGED INSULATION. REPLACE INSULATION VOIDS WITH MATERIAL TO MATCH EXISTING THICKNESS AND TYPE. SEAL INSULATION JACKET AND INSULATE NEW PIPE CAPS.
- CONTRACTORS SHALL FIELD VERIFY SIZE AND LOCATION OF ALL PIPING AND EQUIPMENT SHOWN ON DEMOLITION PLANS. SIZES AND LOCATIONS OF EQUIPMENT AND PIPING SHOWN PER ORIGINAL PLANS.
- REMOVE FAN COIL FC-2, DUCTWORK, ALL RELATED ACCESSORIES & HANGERS. REMOVE OA DUCTWORK UP TO ROOF DECK & PROVIDE INSULATED DUCT CAP. SEE ROOF PLAN FOR RELATED WORK AT ROOF.
- REMOVE FAN COIL FC-3, DUCTWORK, ALL RELATED ACCESSORIES & HANGERS. SEE ROOF PLAN M6.1 FOR WORK AT ROOF CURB.
- CONTRACTOR SHALL REMOVE EXHAUST GRILLES & PREP OPENING FOR NEW WORK. (NEW GRILLES TO MATCH EXISTING) CONTRACTOR SHALL DOCUMENT EXISTING GRILLE SIZES & LOCATIONS FOR COORDINATION WITH NEW WORK. FIELD-VERIFY.
- PORTION OF RELIEF AIR DUCTWORK THRU WALL TO REMAIN THRU WALL. COORDINATE EXTENT TO REMAIN WITH NEW BASE BID WORK.
- MAINTAIN PORTION OF DUCTWORK THRU WALL FOR RELIEF/TRANSFER AIR.

NOTE: ALL DEMOLITION WORK MUST PROCEED CONSECUTIVELY AND IN COORDINATION WITH CONSTRUCTION SCHEDULES.

SPECIFIC NOTES

- REMOVE UNIT VENTILATOR: OA LOUVER TO REMAIN IN PLACE. SEE SHEET M5.1 FOR WORK AT LOUVER. FIELD-VERIFY SIZE & LOCATION. SEE ALSO REMOVE IONIZATION UNITS' BOX NOTE, THIS SHEET, FOR WORK AT UNIT VENTILATOR PRIOR TO DEMOLITION OF UNIT VENTILATOR.
- REMOVE TEMPERATURE SENSOR. REMOVE PNEUMATIC TUBING OR WIRING BACK TO SOURCE & CRIMP/CAP. PROVIDE COVER PLATE WHERE NEW LOCATION DIFFERS FROM EXISTING LOCATION. FIELD-VERIFY LOCATION. COORDINATE WITH NEW WORK. WHEN WALL IS TO BE DEMOLISHED, REMOVE AIR LINES/WIRING UP INTO CEILING SPACE & CAP OR CRIMP AIRTIGHT. SEE SHEET M5.1 FOR NEW WORK.
- REMOVE RETURN AIR DIFFUSER BOOT & GRILLE. SEE M5.1 FOR NEW WORK.
- REMOVE RETURN AIR GRILLE & RELATED ACCESSORIES.
- REMOVE 36/36 REL. DUCT UP TO RELIEF UNIT PR-2 ON ROOF. SEE ROOF PLAN M6.1 FOR MORE RELATED DEMOLITION WORK.
- REMOVE PORTIONS OF RELIEF DUCTWORK AS SHOWN WITHIN HATCHED AREA. REMOVE ALL RELATED ACCESSORIES & HANGERS.
- REMOVE PORTIONS OF RELIEF DUCTWORK AS SHOWN WITHIN HATCHED AREA. REMOVE ALL RELATED ACCESSORIES & HANGERS.
- EXISTING TRANSFER FAN SPACES SHALL REMAIN IN THEIR ENTIRETY.
- REMOVE 36/36 REL. DUCT UP TO RELIEF UNIT PR-2 ON ROOF. SEE ROOF PLAN M6.1 FOR MORE RELATED DEMOLITION WORK.
- REMOVE PORTIONS OF RELIEF DUCTWORK AS SHOWN WITHIN HATCHED AREA. REMOVE ALL RELATED ACCESSORIES & HANGERS.
- FIELD-VERIFY & REMOVE ALL DUCT SYSTEMS, DIFFUSERS, GRILLES & OTHER RELATED ACCESSORIES SERVING RM. 105A. TRANSFER SHALL REMAIN. SEE M5.1 FOR NEW WORK.
- FIELD-VERIFY & REMOVE ALL DUCT SYSTEMS, DIFFUSERS, GRILLES & OTHER RELATED ACCESSORIES SERVING RM. 108A. TRANSFER SHALL REMAIN. SEE M5.1 FOR NEW WORK.

NOTE: CONTRACTOR SHALL REMOVE IONIZATION UNITS & RELATED ACCESSORIES/CONTROLLERS PRIOR TO DEMOLITION OF UNIT VENTILATORS. IONIZATION UNITS SHALL BE REINSTALLED IN NEW WORK. SEE M5.1 FOR NEW WORK. (TYPICAL AT ALL UNIT VENTILATORS TO BE REMOVED FOR THIS PROJECT.)
 REMOVE IONIZATION UNITS

NOTE: EXISTING DUCTWORK EQUIPMENT TAGS & RELATED ACCESSORIES OR NOTES ARE SHOWN IN ITALICS.

1 FIRST FLOOR PLAN
 VENTILATION DEMOLITION

1/8"=1'-0" NORTH

A1 A2 A3 A4 A5 A6 A7 0 01

