

ROOM NO.	ROOM NAME
101	SPEECH
103	CORRIDOR
103A	SPECIAL CL
104	SPECIAL CL
104A	OFFICE
105	KINDERGARTEN
105A	STORAGE
105B	BOYS TOILET
105C	GIRLS TOILET
106	GIRLS TOILET
107	CLASSROOM
108	KINDERGARTEN
108A	STORAGE
108B	GIRLS TOILET
108C	BOYS TOILET
109	SPECIAL CL
109A	CORRIDOR
109B	CORRIDOR
109C	GIRLS TOILET
109D	BOYS TOILET
109E	CUSTODIAN
110	CLASSROOM
110A	CALMING ROOM
110B	LOR
111	CLASSROOM
112	CLASSROOM
113	CLASSROOM
113A	CALMING ROOM
113B	LOR
114	CLASSROOM
115	CLASSROOM
116	CLASSROOM
117	WORK/STORAGE
118	NURSE
118A	COT ROOM
118B	COT ROOM
118C	TOILET
119	GENERAL OFFICE
119A	PRINCIPLE

REVISIONS

1	Addendum #2	12/17/2021
---	-------------	------------

HVAC Replacement and Deferred Maintenance - Phase 3

CROOKED LAKE ELEMENTARY SCHOOL

Anoka-Hennepin Schools I.S.D. No. 11
 2939 Bunker Lake Blvd NW
 Andover, MN 55304

SIGNATURE / SEAL

I hereby certify that this plan, specification, or report was prepared by me or under my direct supervision and that I am a duly licensed Professional Engineer under the laws of the State of Minnesota.

Blayne Parkos

SIGNATURE
 Blayne Parkos, PE
 TYPED OR PRINTED NAME
 October 27, 2021
 DATE
 46630
 LICENSE NUMBER

KEYPLAN

DRAWN BY
 GEG

CHECKED BY
 BJP / GEG

ISSUED FOR
 CONSTRUCTION DOCUMENTS

ISSUE DATE
 OCTOBER 27, 2021

SHEET NAME

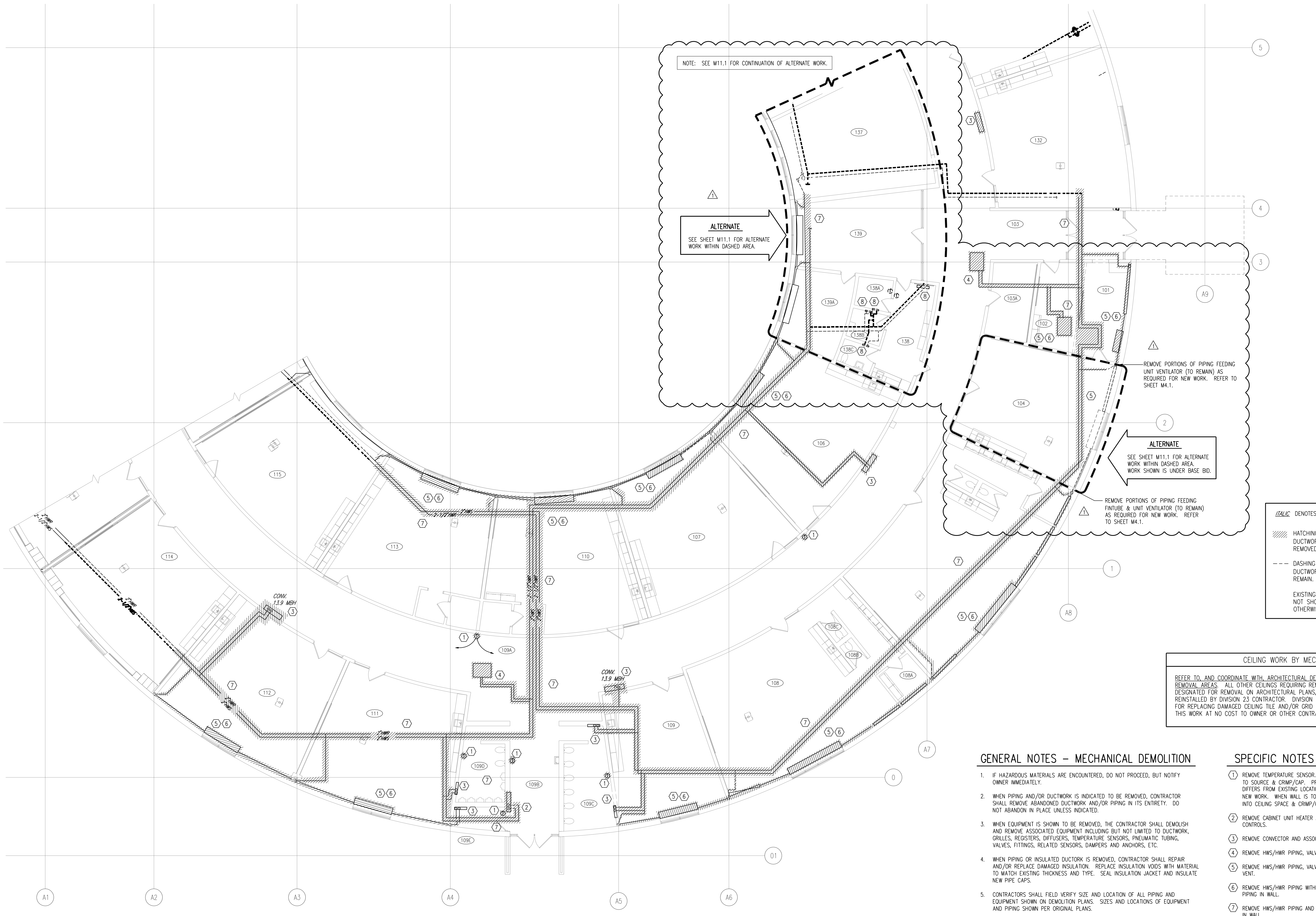
HYDRONIC DEMOLITION PLAN

ATSR PROJECT NO.
 19039.2

REVISION NO.
 1

SHEET NUMBER

MD4.1



NOTE: SEE M11.1 FOR CONTINUATION OF ALTERNATE WORK.

ALTERNATE
 SEE SHEET M11.1 FOR ALTERNATE WORK WITHIN DASHED AREA.

REMOVE PORTIONS OF PIPING FEEDING UNIT VENTILATOR (TO REMAIN) AS REQUIRED FOR NEW WORK. REFER TO SHEET M4.1.

ALTERNATE
 SEE SHEET M11.1 FOR ALTERNATE WORK WITHIN DASHED AREA. WORK SHOWN IS UNDER BASE BID.

REMOVE PORTIONS OF PIPING FEEDING FINITURE & UNIT VENTILATOR (TO REMAIN) AS REQUIRED FOR NEW WORK. REFER TO SHEET M4.1.

- DASHING DENOTES MECHANICAL PIPING, DUCTWORK, AND/OR EQUIPMENT TO REMAIN.
- EXISTING MECHANICAL EQUIPMENT/PIPING NOT SHOWN SHALL REMAIN UNLESS OTHERWISE NOTED.

CEILING WORK BY MECHANICAL

REFER TO AND COORDINATE WITH ARCHITECTURAL DEMOLITION PLANS FOR CEILING REMOVAL AREAS - ALL OTHER CEILINGS REQUIRING REMOVAL WHICH ARE NOT DESIGNATED FOR REMOVAL ON ARCHITECTURAL PLANS, SHALL BE REMOVED AND REINSTALLED BY DIVISION 23 CONTRACTOR. DIVISION 23 CONTRACTOR IS RESPONSIBLE FOR REPLACING DAMAGED CEILING TILE AND/OR GRID COMPONENTS OCCURRING DURING THIS WORK AT NO COST TO OWNER OR OTHER CONTRACTOR.

GENERAL NOTES - MECHANICAL DEMOLITION

1. IF HAZARDOUS MATERIALS ARE ENCOUNTERED, DO NOT PROCEED, BUT NOTIFY OWNER IMMEDIATELY.
2. WHEN PIPING AND/OR DUCTWORK IS INDICATED TO BE REMOVED, CONTRACTOR SHALL REMOVE ABANDONED DUCTWORK AND/OR PIPING IN ITS ENTIRETY. DO NOT ABANDON IN PLACE UNLESS INDICATED.
3. WHEN EQUIPMENT IS SHOWN TO BE REMOVED, THE CONTRACTOR SHALL DEMOLISH AND REMOVE ASSOCIATED EQUIPMENT INCLUDING BUT NOT LIMITED TO DUCTWORK, GRILLES, REGISTERS, DIFFUSERS, TEMPERATURE SENSORS, PNEUMATIC TUBING, VALVES, FITTINGS, RELATED SENSORS, DAMPERS AND ANCHORS, ETC.
4. WHEN PIPING OR INSULATED DUCTWORK IS REMOVED, CONTRACTOR SHALL REPAIR AND/OR REPLACE DAMAGED INSULATION. REPLACE INSULATION VOIDS WITH MATERIAL TO MATCH EXISTING THICKNESS AND TYPE. SEAL INSULATION JACKET AND INSULATE NEW PIPE CAPS.
5. CONTRACTORS SHALL FIELD VERIFY SIZE AND LOCATION OF ALL PIPING AND EQUIPMENT SHOWN ON DEMOLITION PLANS. SIZES AND LOCATIONS OF EQUIPMENT AND PIPING SHOWN PER ORIGINAL PLANS.
6. DEMOLISHED MATERIAL SHALL BE REMOVED AND DISPOSED OF IN COMPLIANCE WITH SPECIFICATIONS, FEDERAL, STATE AND LOCAL CODES.
7. CONTRACTOR SHALL GROUT ALL FLOOR OPENINGS THAT ARE NOT TO BE REUSED.
8. WHEN TEMPERATURE SENSORS ARE REMOVED, REMOVE RELATED AIR LINES/WIRING SOURCE & CAP/CRIMP. PROVIDE COVER PLATE WHERE NEW SENSOR LOCATION IS OTHER THAN SHOWN ON PLAN. COORDINATE WITH NEW WORK DRAWINGS. FIELD-VERIFY ALL LOCATIONS.
9. TERMINATE HEATING TERMINAL UNIT PIPING REMOVED UNDER THIS PROJECT WITH BALL VALVES AND CAPS AT FLOWING MAIN. (TYPICAL)

NOTE: ALL DEMOLITION WORK MUST PROCEED CONSECUTIVELY AND IN COORDINATION WITH CONSTRUCTION SCHEDULES.

SPECIFIC NOTES

- 1 REMOVE TEMPERATURE SENSOR. REMOVE PNEUMATIC TUBING OR WIRING BACK TO SOURCE & CRIMP/CAP. PROVIDE COVER PLATE WHERE NEW LOCATION DIFFERS FROM EXISTING LOCATION. FIELD-VERIFY LOCATION. COORDINATE WITH NEW WORK. WHEN WALL IS TO BE DEMOLISHED, REMOVE AIR LINES/WIRING UP INTO CEILING SPACE & CRIMP/CAP AIRTIGHT.
- 2 REMOVE CABINET UNIT HEATER AND ASSOCIATED HWS/HWR PIPING, VALVES & CONTROLS.
- 3 REMOVE CONVECTOR AND ASSOCIATED HWS/HWR PIPING, VALVES & CONTROLS.
- 4 REMOVE HWS/HWR PIPING, VALVES & CONTROLS ASSOCIATED WITH FAN COIL CO.
- 5 REMOVE HWS/HWR PIPING, VALVES FTR & CONTROLS ASSOCIATED WITH UNIT VENT.
- 6 REMOVE HWS/HWR PIPING WITHIN ROOM AND CUT FLUSH AT WALL. ABANDON PIPING IN WALL.
- 7 REMOVE HWS/HWR PIPING AND ACCESSORIES ABOVE CEILING. ABANDON PIPING IN WALL.
- 8 HYDRONIC HEATING TERMINAL TO REMAIN W/ ASSOCIATED PIPING IN WALL. REMOVE CONTROL VALVE AND REPLACE WITH NEW.