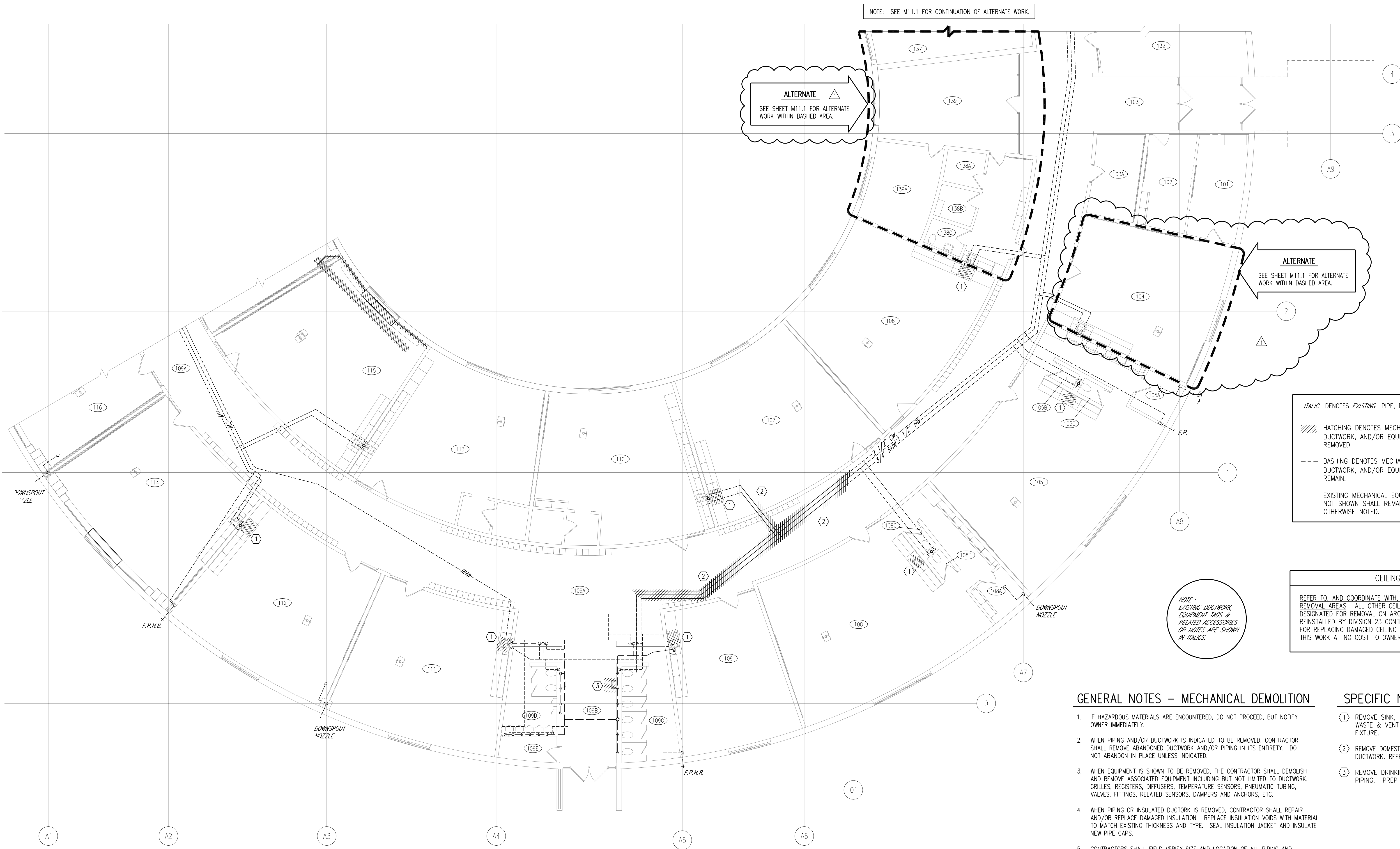


ROOM NO.	ROOM NAME
101	SPEECH
102	CORRIDOR
103A	SPECIAL CL.
104	SPECIAL CL.
104A	OFFICE
105	KINDERGARTEN
105A	STORAGE
105B	BOYS TOILET
105C	GIRLS TOILET
106	GIRLS TOILET
107	CLASSROOM
108	KINDERGARTEN
108A	STORAGE
108B	GIRLS TOILET
108C	BOYS TOILET
109	SPECIAL CL.
109A	CORRIDOR
109B	CORRIDOR
109C	GIRLS TOILET
109D	BOYS TOILET
109E	CUSTODIAN
110	CLASSROOM
110A	CALMING ROOM
110B	LOIR
111	CLASSROOM
112	CLASSROOM
113	CLASSROOM
113A	CALMING ROOM
113B	LOIR
114	CLASSROOM
115	CLASSROOM
116	CLASSROOM
137	WORK/STORAGE
138	NURSE
138A	COOL ROOM
138B	COOL ROOM
138C	TOILET
139	GENERAL OFFICE
139A	PRINCIPLE



ALTERNATE
 SEE SHEET M11.1 FOR ALTERNATE WORK WITHIN DASHED AREA.

ALTERNATE
 SEE SHEET M11.1 FOR ALTERNATE WORK WITHIN DASHED AREA.

ITALIC DENOTES EXISTING PIPE, DUCT, OR EOMT.
 HATCHING DENOTES MECHANICAL PIPING, DUCTWORK, AND/OR EQUIPMENT TO BE REMOVED.
 DASHING DENOTES MECHANICAL PIPING, DUCTWORK, AND/OR EQUIPMENT TO REMAIN.
 EXISTING MECHANICAL EQUIPMENT/PIPING NOT SHOWN SHALL REMAIN UNLESS OTHERWISE NOTED.

CEILING WORK BY MECHANICAL
 REFER TO, AND COORDINATE WITH, ARCHITECTURAL DEMOLITION PLANS FOR CEILING REMOVAL AREAS. ALL OTHER CEILINGS REQUIRING REMOVAL, WHICH ARE NOT DESIGNATED FOR REMOVAL ON ARCHITECTURAL PLANS, SHALL BE REMOVED AND REINSTALLED BY DIVISION 23 CONTRACTOR. DIVISION 23 CONTRACTOR IS RESPONSIBLE FOR REPLACING DAMAGED CEILING TILE AND/OR GRID COMPONENTS OCCURRING DURING THIS WORK AT NO COST TO OWNER OR OTHER CONTRACTOR.

NOTE:
 EXISTING DUCTWORK, EQUIPMENT TAGS & RELATED ACCESSORIES OR NOTES ARE SHOWN IN ITALICS.

GENERAL NOTES – MECHANICAL DEMOLITION

- IF HAZARDOUS MATERIALS ARE ENCOUNTERED, DO NOT PROCEED, BUT NOTIFY OWNER IMMEDIATELY.
- WHEN PIPING AND/OR DUCTWORK IS INDICATED TO BE REMOVED, CONTRACTOR SHALL REMOVE ABANDONED DUCTWORK AND/OR PIPING IN ITS ENTIRETY. DO NOT ABANDON IN PLACE UNLESS INDICATED.
- WHEN EQUIPMENT IS SHOWN TO BE REMOVED, THE CONTRACTOR SHALL DEMOLISH AND REMOVE ASSOCIATED EQUIPMENT INCLUDING BUT NOT LIMITED TO DUCTWORK, GRILLES, REGISTERS, DIFFUSERS, TEMPERATURE SENSORS, PNEUMATIC TUBING, VALVES, FITTINGS, RELATED SENSORS, DAMPERS AND ANCHORS, ETC.
- WHEN PIPING OR INSULATED DUCTWORK IS REMOVED, CONTRACTOR SHALL REPAIR AND/OR REPLACE DAMAGED INSULATION. REPLACE INSULATION VOIDS WITH MATERIAL TO MATCH EXISTING THICKNESS AND TYPE. SEAL INSULATION JACKET AND INSULATE NEW PIPE CAPS.
- CONTRACTORS SHALL FIELD VERIFY SIZE AND LOCATION OF ALL PIPING AND EQUIPMENT SHOWN ON DEMOLITION PLANS. SIZES AND LOCATIONS OF EQUIPMENT AND PIPING SHOWN PER ORIGINAL PLANS.
- DEMOLISHED MATERIAL SHALL BE REMOVED AND DISPOSED OF IN COMPLIANCE WITH SPECIFICATIONS, FEDERAL, STATE AND LOCAL CODES.
- CONTRACTOR SHALL GROUT ALL FLOOR OPENINGS THAT ARE NOT TO BE REUSED.
- WHEN TEMPERATURE SENSORS ARE REMOVED, REMOVE RELATED AIR LINES/WIRING SOURCE & CAP/CRMP. PROVIDE COVER PLATE WHERE NEW SENSOR LOCATION IS OTHER THAN SHOWN ON PLAN. COORDINATE WITH NEW WORK DRAWINGS. FIELD-VERIFY ALL LOCATIONS.
- TERMINATE HEATING TERMINAL UNIT PIPING REMOVED UNDER THIS PROJECT WITH BALL VALVES AND CAPS AT FLOWING MAIN. (TYPICAL)

NOTE: ALL DEMOLITION WORK MUST PROCEED CONSECUTIVELY AND IN COORDINATION WITH CONSTRUCTION SCHEDULES.

SPECIFIC NOTES

- REMOVE SINK, FAUCET & BUBBLER. DISCONNECT HW & CW PIPING, WASTE & VENT PIPING. PREP PIPING FOR CONNECTIONS TO NEW FIXTURE.
- REMOVE DOMESTIC PIPING AS SHOWN TO AVOID CONFLICT WITH NEW DUCTWORK. REFER TO DRAWING M3.1 FOR NEW PIPE ROUTING.
- REMOVE DRINKING FOUNTAIN. DISCONNECT CW PIPING, WASTE & VENT PIPING. PREP PIPING FOR CONNECTIONS TO NEW FIXTURE.

**FIRST FLOOR PLAN
 PLUMBING DEMOLITION**
 1/8"=1'-0" NORTH