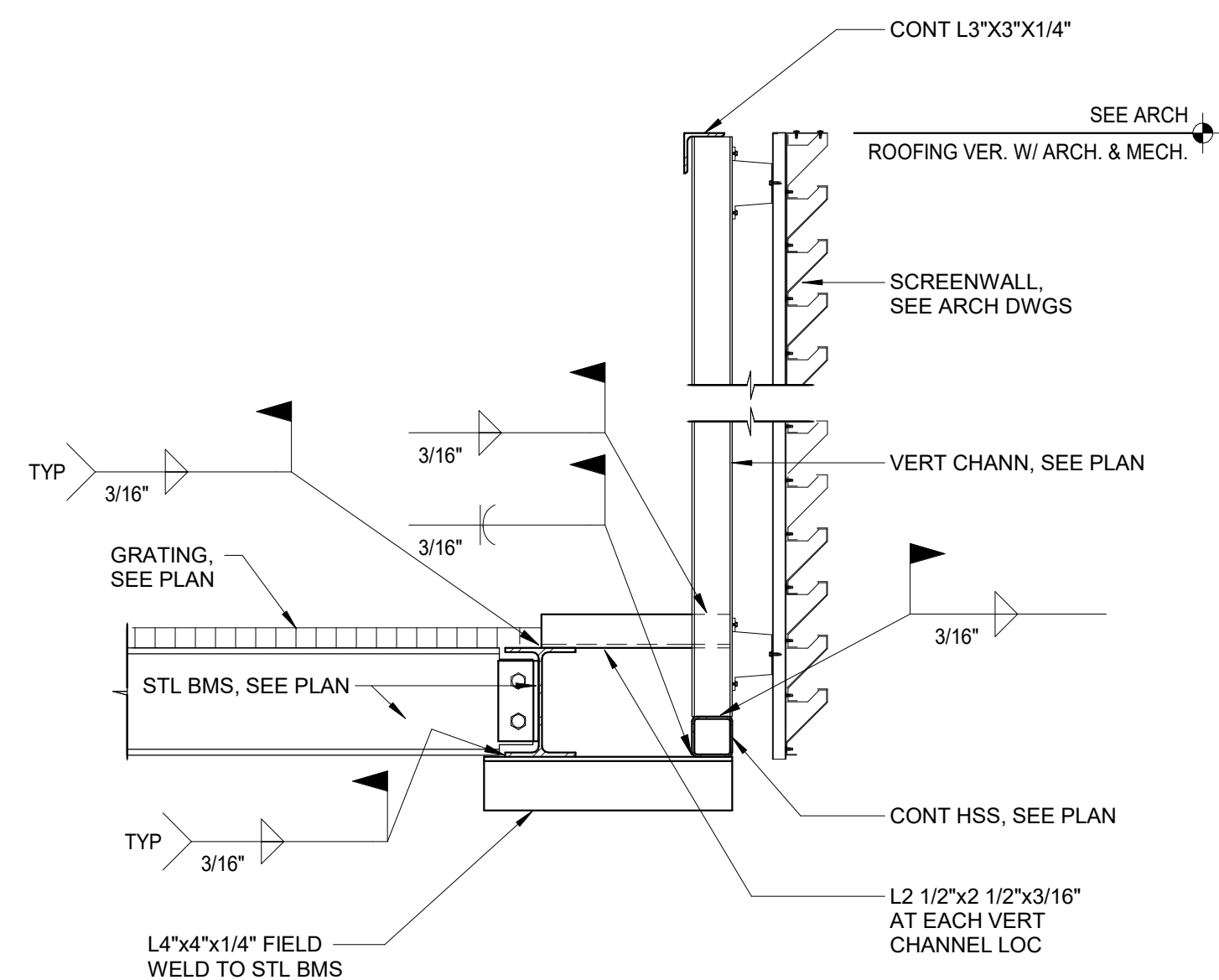
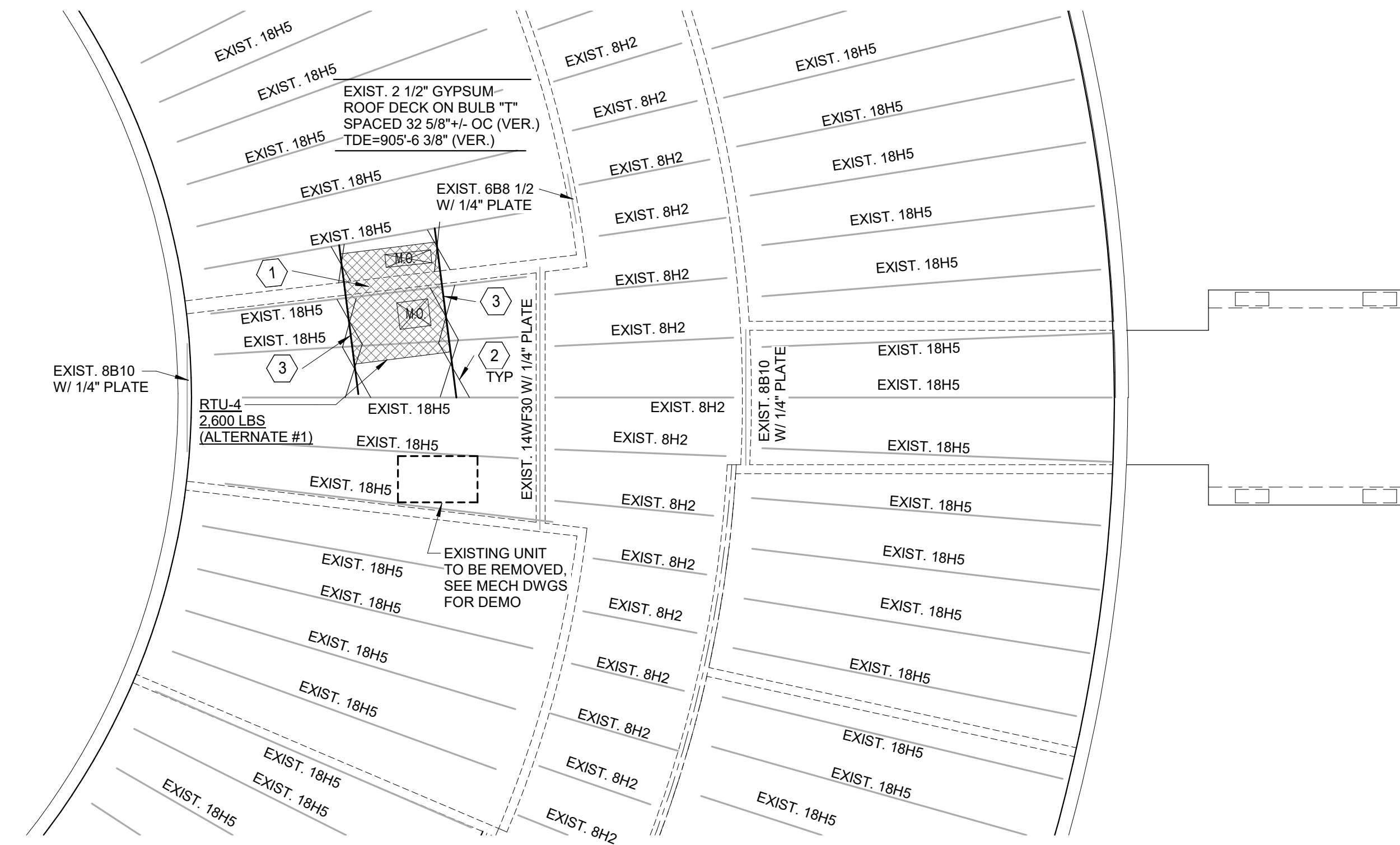


3 SECTION
1" = 1'-0"



4 SECTION
1" = 1'-0"



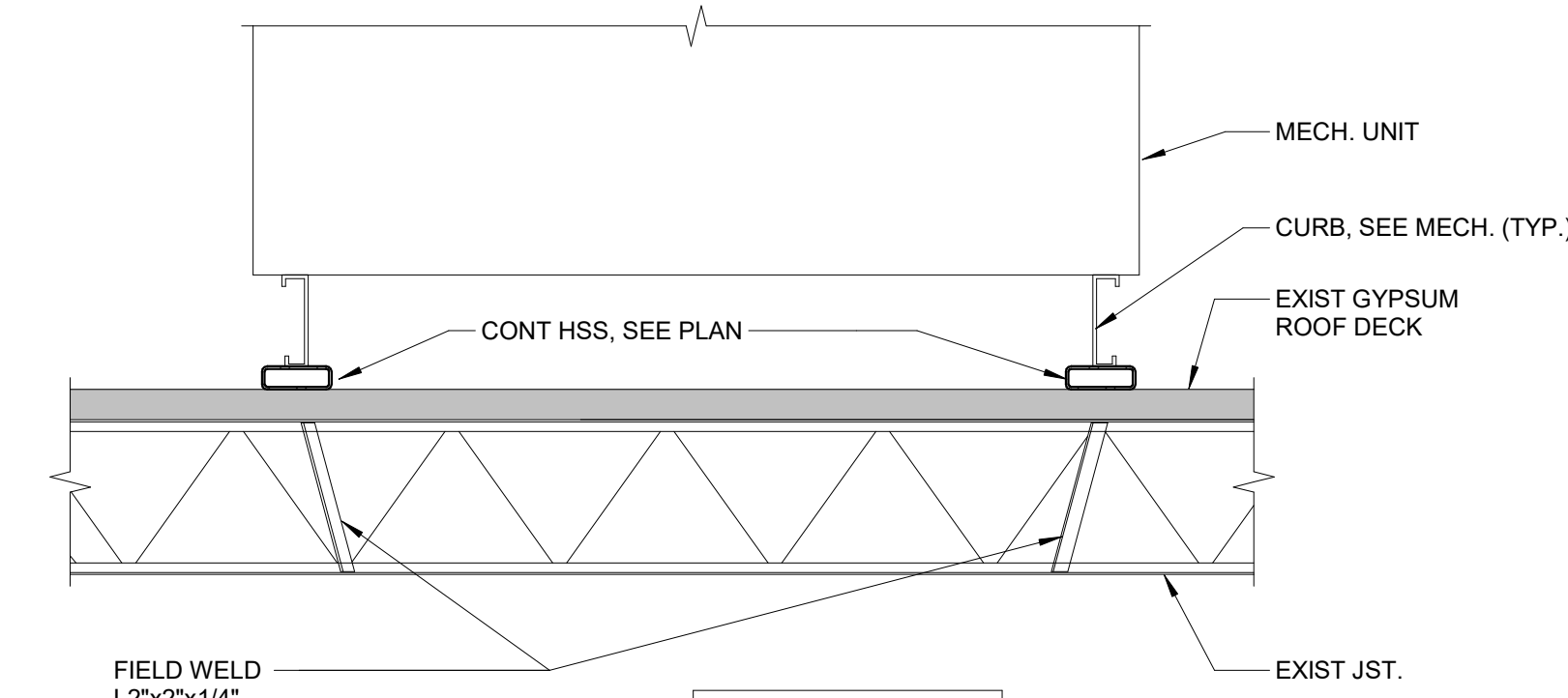
1 PARTIAL ROOF FRAMING PLAN - ALTERNATE #1
1/8" = 1'-0"

GENERAL PLAN NOTES:

1. VERIFY ALL DIMENSIONS AND ELEVATIONS W/ ARCH. DRAWINGS
2. FIELD VERIFY EXISTING CONDITIONS PRIOR TO WORK
3. FOR NEW ROOF OPENING SUPPORT SEE SECTION 7/S2.0
4. FOR POINT LOAD TO STL JOISTS SEE SECTION 8/S2.0
5. IF X-BRIDGING IS BEING REMOVED FROM A JOIST SPACE, THEN BOTTOM CHORD HORIZONTAL JOIST BRIDGING SHOULD BE ADDED TO EACH ADJACENT JOIST SPACE, SEE 11/S2.0
6. IF BOTTOM CHORD HORIZONTAL JOIST BRIDGING IS REMOVED FROM (1) JOIST SPACE, THEN X-BRIDGING SHOULD BE ADDED TO THE (2) ADJACENT JOIST SPACES. YOU CAN NOW ELIMINATE BOTTOM CHORD HORIZONTAL JOIST BRIDGING IN (2) OR MORE CONSECUTIVE JOIST SPACES
7. GALVANIZE ALL STEEL EXPOSED TO WEATHER (ABOVE ROOFING)

ROOF PLAN NOTES:

1. GROUT/ BRICK IN SOLID ANY GAPS BETWEEN TOP OF WALL AND GYP DECK.
2. ADD L2x2x3/16" X BRIDGING BETWEEN CHORDS OF JOISTS AT BEARING POINT OF UNIT. 2 BAYS THUS. FOR WEB REINFORCING TO BE ADDED AT BEARING POINTS, SEE SECTIONS 2/S2.1 AND 9/S2.0
3. ADD CHANN HSS6x2x1/4" UNDER THE UNIT SPANNING BETWEEN THE JOISTS, SEE SECTION 2/S2.1



2 SECTION - ALTERNATE #1
3/4" = 1'-0"



REV NO	DESCRIPTION	DATE

**CROOKED LAKE
ELEMENTARY SCHOOL**
HVAC Replacement and Deferred
Maintenance - Phase 3
Anoka-Hennepin Schools I.S.D. No. 11
2939 Bunker Lake Blvd NW
Andover, MN 55304

SIGNATURE / SEAL

I hereby certify that this plan, specification, or report was prepared by me or under my direct supervision and that I am a duly licensed Professional Engineer under the laws of the State of Minnesota.

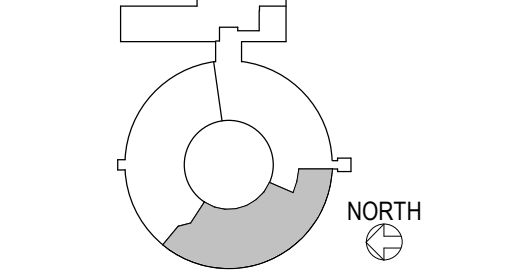
Timothy G. LaBissoniere
Signature

Timothy G. LaBissoniere
Typed or printed name

OCTOBER 27, 2021
Date

21387
License Number

KEYPLAN



DRAWN BY
EH

CHECKED BY
TGL

ISSUED FOR
CONSTRUCTION DOCUMENTS

ISSUE DATE
OCTOBER 27, 2021

SHEET NAME
PARTIAL ROOF FRAMING PLAN AND SECTIONS

ATSAR PROJECT NO.
19039.2

IMEG NO. 21006107.00

REVISION NO.

SHEET NUMBER