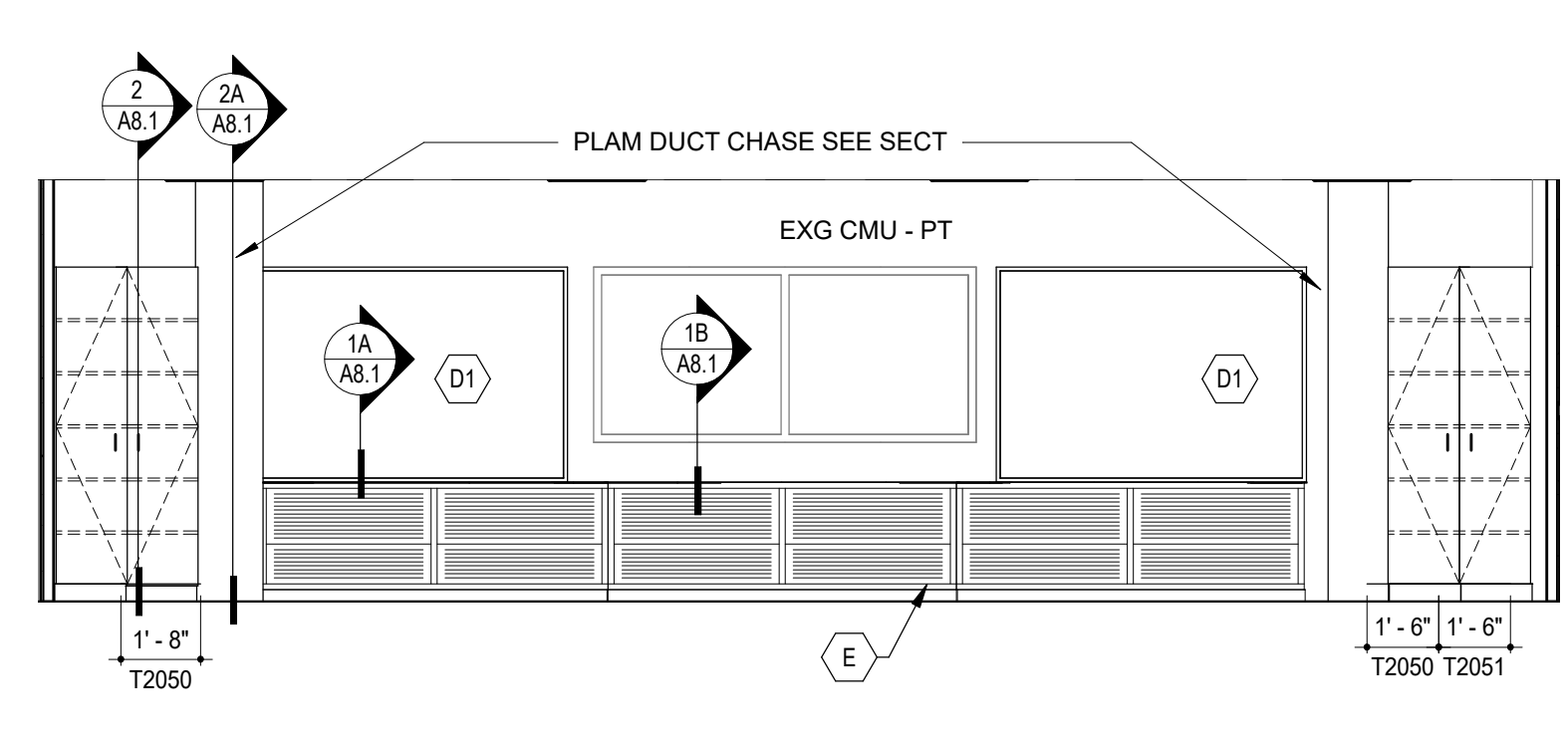
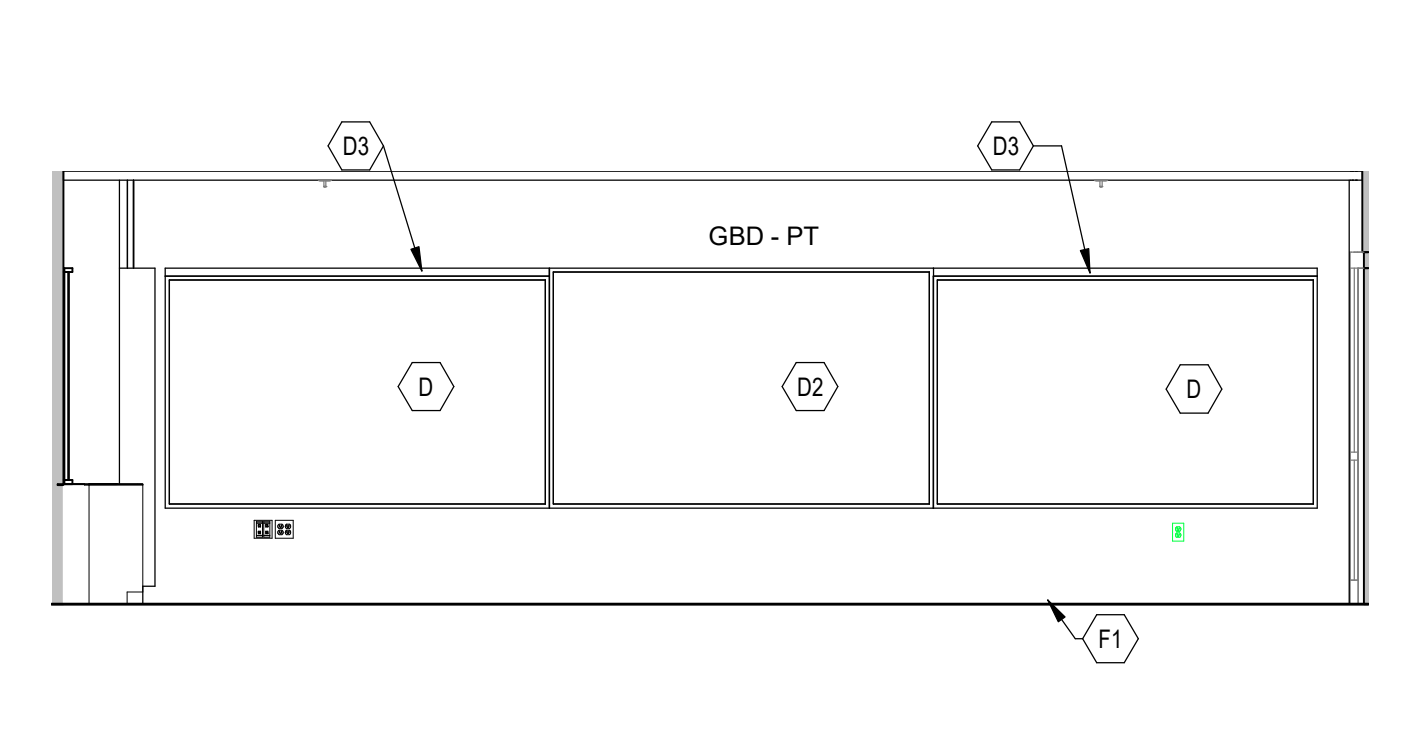


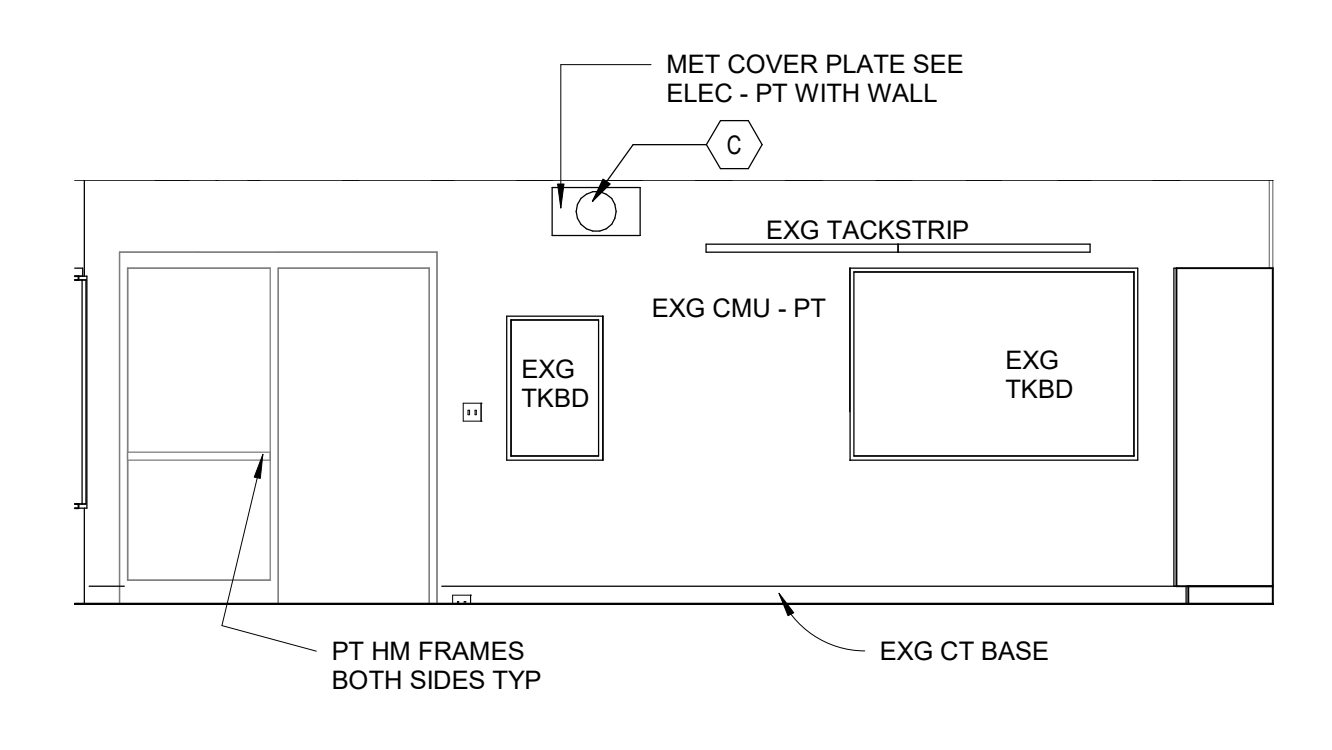
1 Elevation 111 S
 A11.2 1/4" = 1'-0"



1A Elevation 111 W
 A11.2 1/4" = 1'-0"



1B Elevation 111 N
 A11.2 1/4" = 1'-0"

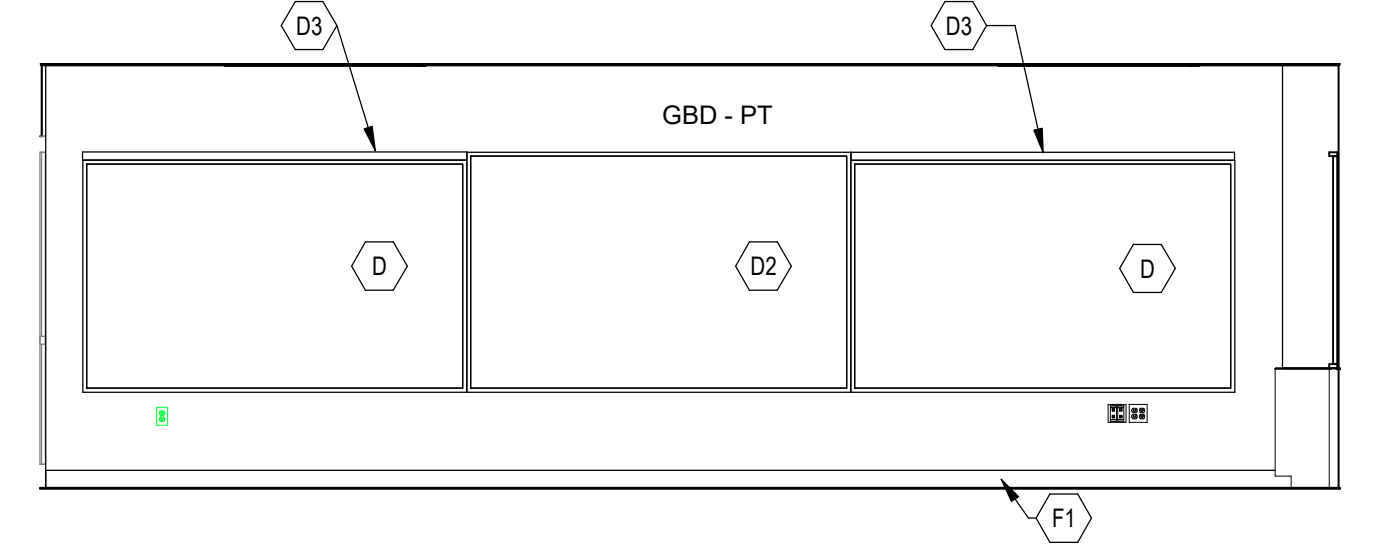


1C Elevation 111 E
 A11.2 1/4" = 1'-0"

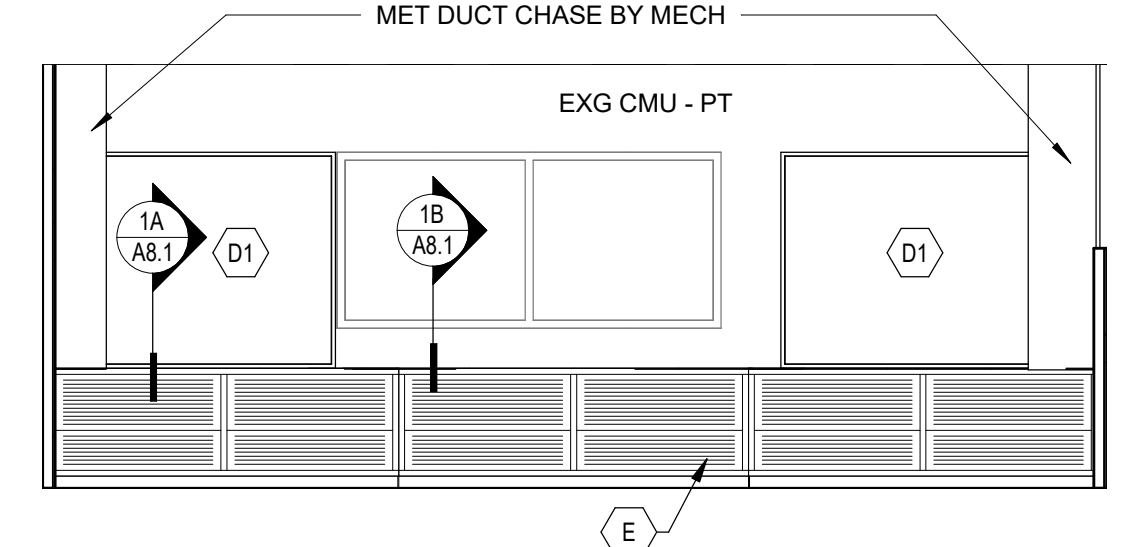
GENERAL CASEWORK NOTES:

- NOTE: ALL CASEWORK BY OWNER (N.I.C)
- CASEWORK NUMBERS ARE LISTED WITH TMI CORPORATION (UON).
 - PROVIDE 4 1/2" TOE KICK UON
 - 4 1/2" VINYL BASE ON ALL EXPOSED SIDES OF CASEWORK BY RESIDENT FLOOR SUPPLIER (UON).
 - COUNTERTOPS TO BE PLAM WITH 3" HIGH BACKSLASH AND ENDSPLASH AT ALL VERTICAL SURFACES (UON).
 - USE SCRIBE STRIP ON ALL CASEWORK WHERE IT MEETS A WALL.
 - CASEWORK ENDS AND BACKS SHALL BE FINISHED WHERE EXPOSED TO VIEW.
 - MECHANICAL TO ROUGH-IN AND HOOK-UP FOR ALL SINKS AND FIXTURES PROVIDED BY CASEWORK MANUFACTURER.
 - ELECTRICAL TO PROVIDE CONNECTION TO ANY ELECTRICAL DEVICES PROVIDED BY CASEWORK MANUFACTURER.
 - CASEWORK INSTALLER TO PROVIDE CUTOFF IN BACK OF CABINET AS NEEDED TO PROTECT CASEWORK DOOR AND HINGE.
 - CASEWORK INSTALLER TO PROVIDE STOP CHAINS WHERE NEEDED TO PROTECT CABINET DOOR AND HINGE.
 - PROVIDE FILLER PANEL AT FRONT, TOP AND BOTTOM AS REQUIRED TO ENCLOSE SPACE. PANELS TO MATCH ADJACENT CABINET MATERIAL.
 - PROVIDE BLOCKING FOR CASEWORK LOCATED ON GBD/STL STUD WALL.
 - CASEWORK INSTALLER TO INSTALL ALL APPLIANCES SUPPLIED BY OWNER AS CALLED FOR ON CASEWORK ELEVATIONS. MECHANICAL AND ELECTRICAL TO PROVIDE CONNECTIONS AS REQUIRED.
 - PROVIDE LOCKS ON CABINET DOORS AND DRAWERS WHERE NOTED.
 - PROVIDE 1/4" KOROLATH SHIMS FOR ALL CABINETS AT FLOOR.

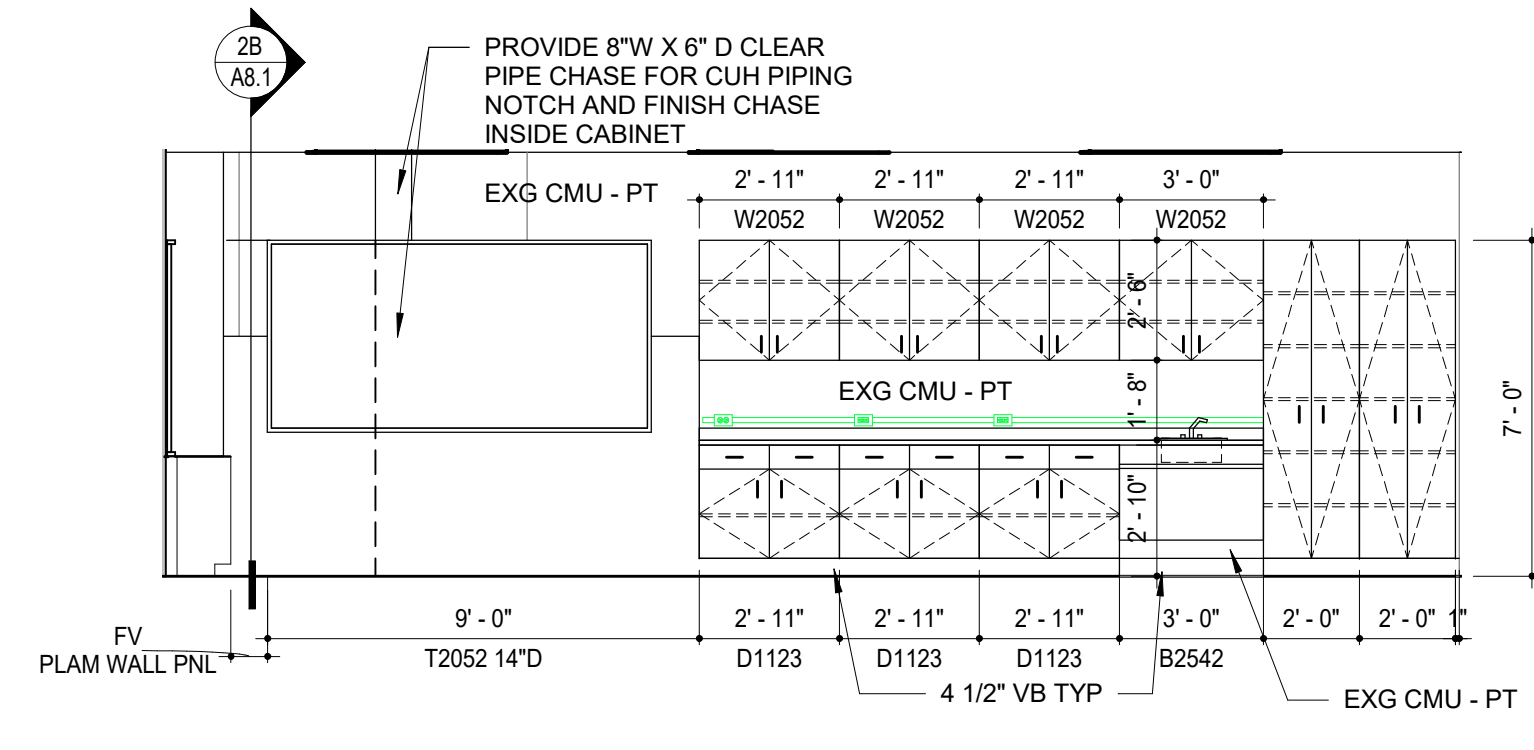
REVISIONS	DESCRIPTION	DATE
1	Addendum #2	12/17/2021
2	Addendum #3	12/29/2021



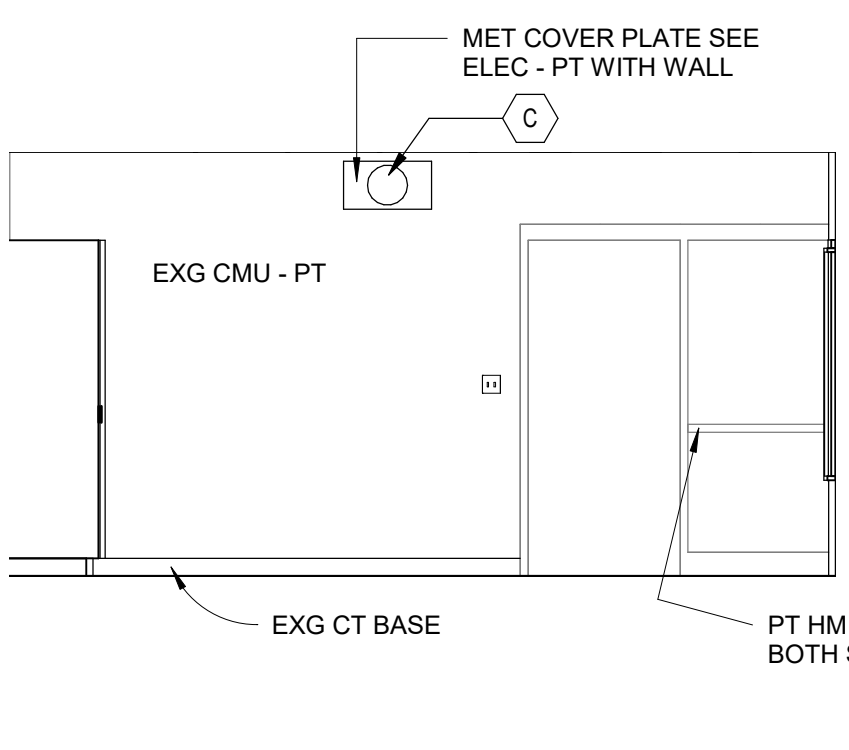
2 Elevation 109 S
 A11.2 1/4" = 1'-0"



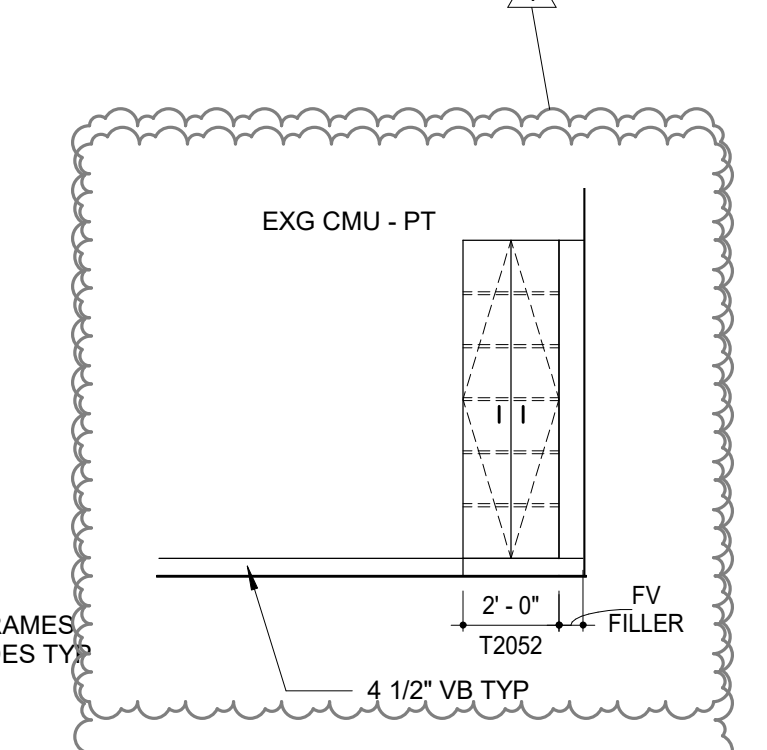
2A Elevation 109 W
 A11.2 1/4" = 1'-0"



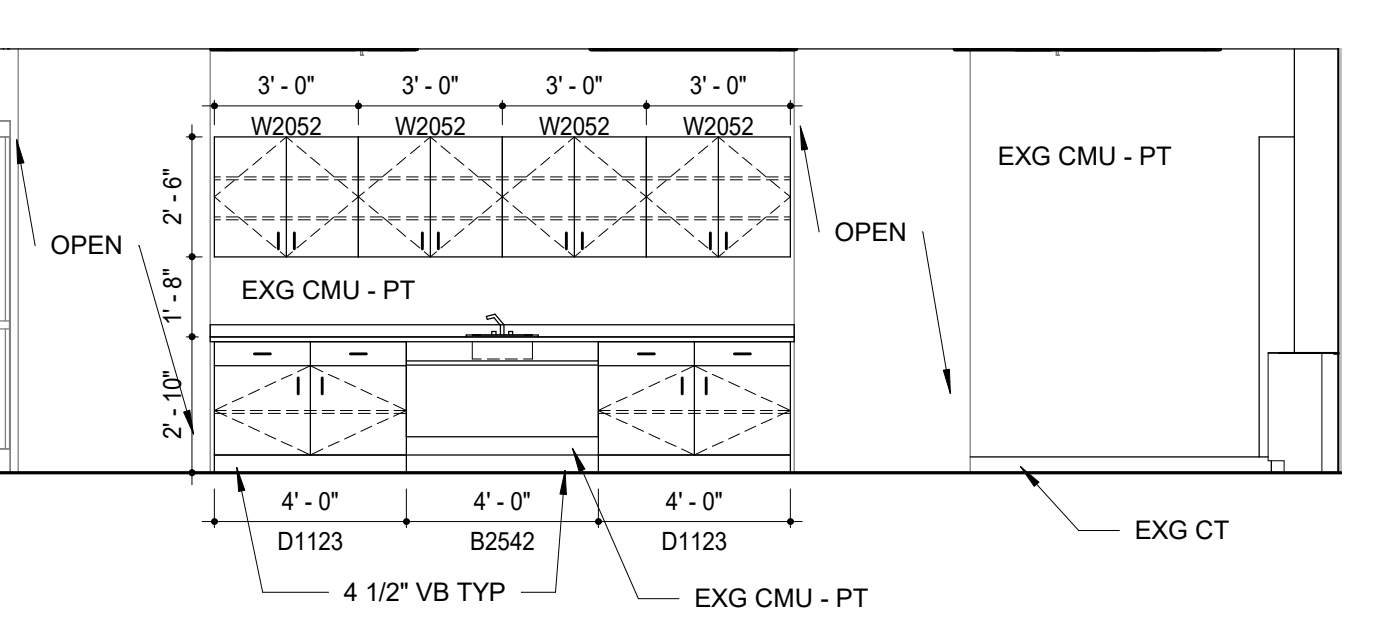
2B Elevation 109 N
 A11.2 1/4" = 1'-0"



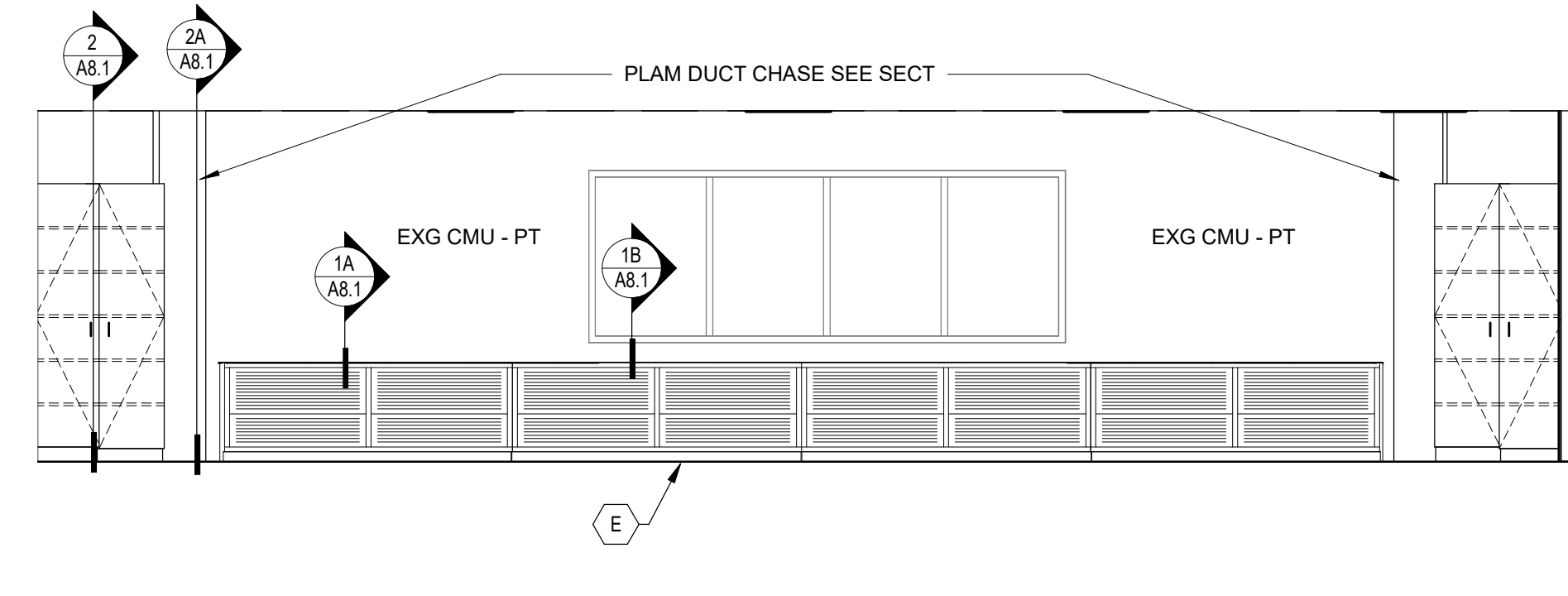
2C Elevation 109 E
 A11.2 1/4" = 1'-0"



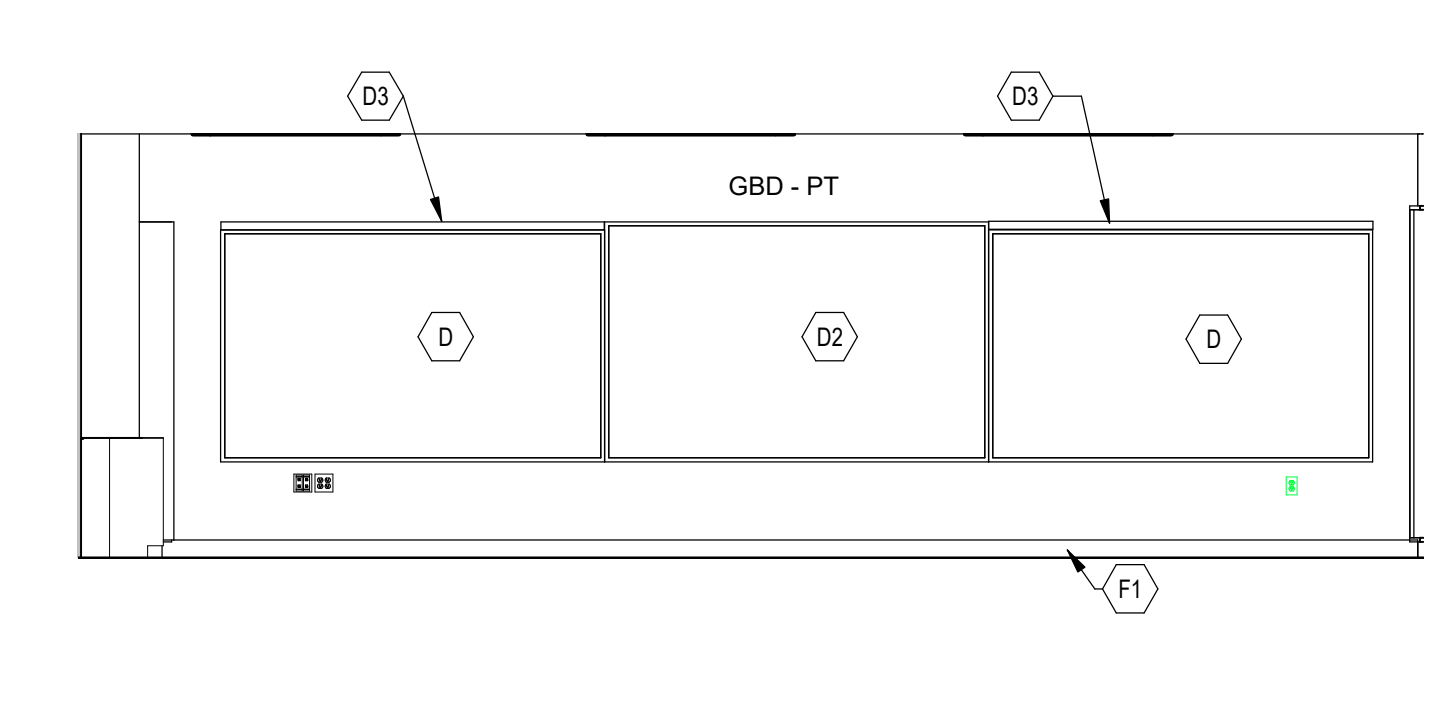
2D Elevation 102 E
 A11.2 1/4" = 1'-0"



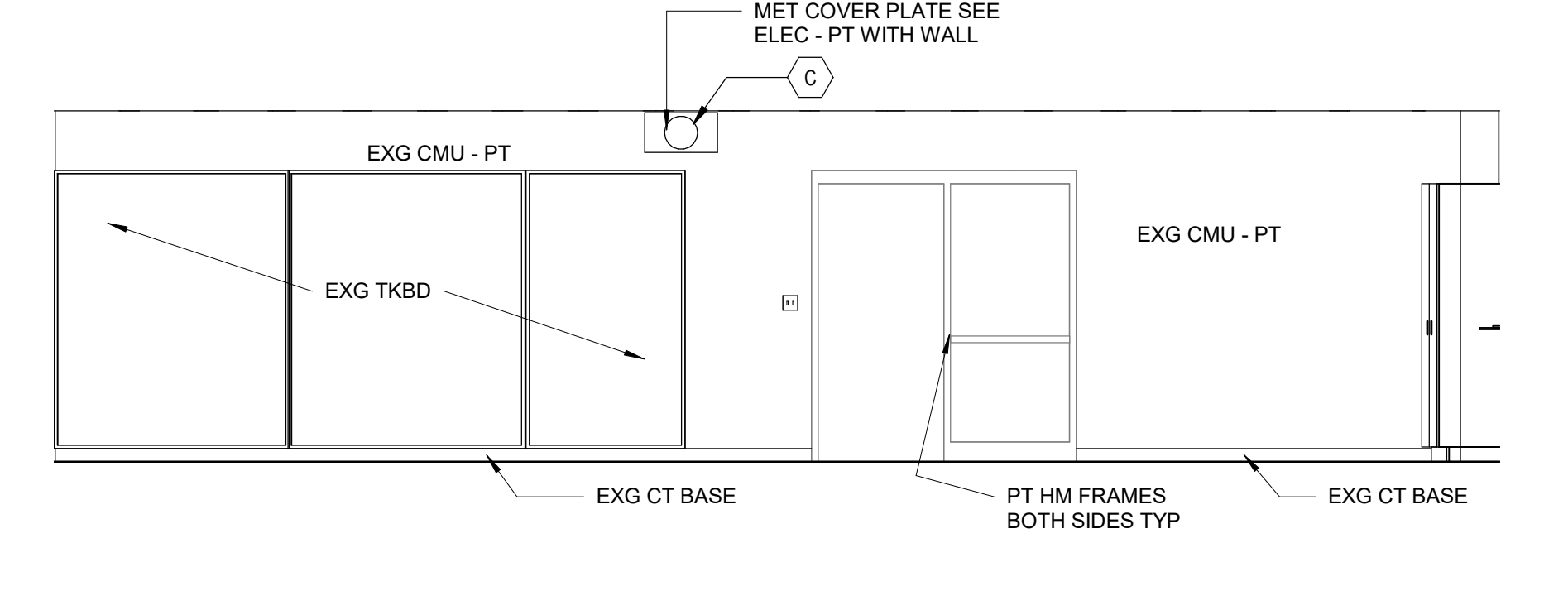
3 Elevation 108 S
 A11.2 1/4" = 1'-0"



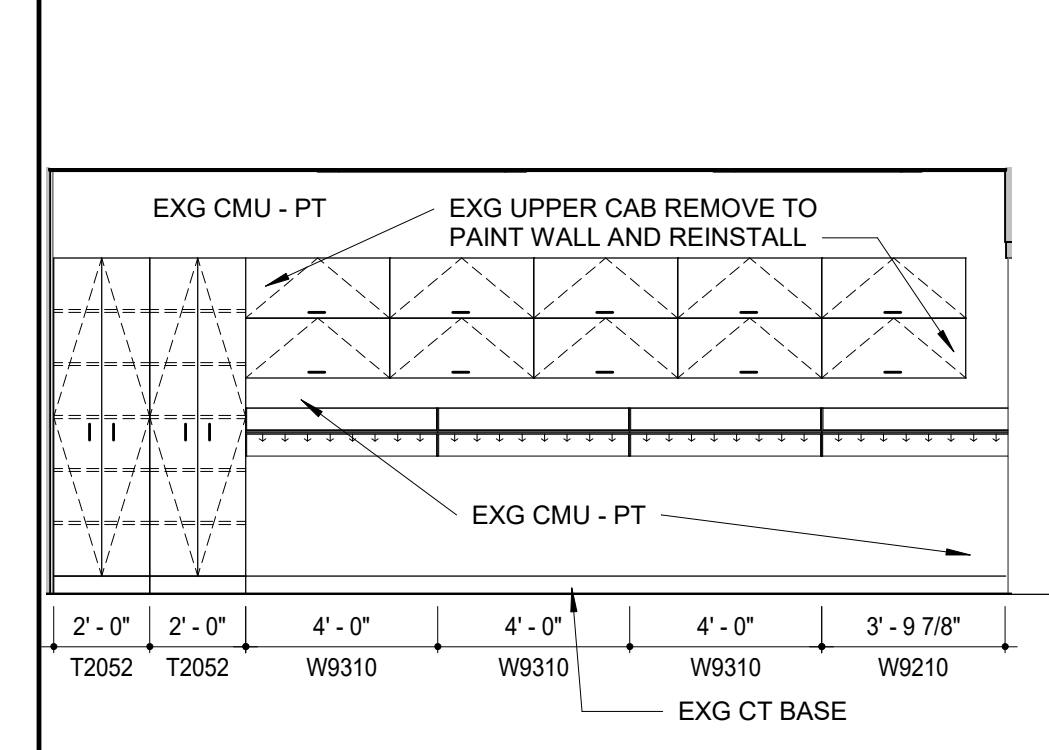
3A Elevation 108 W
 A11.2 1/4" = 1'-0"



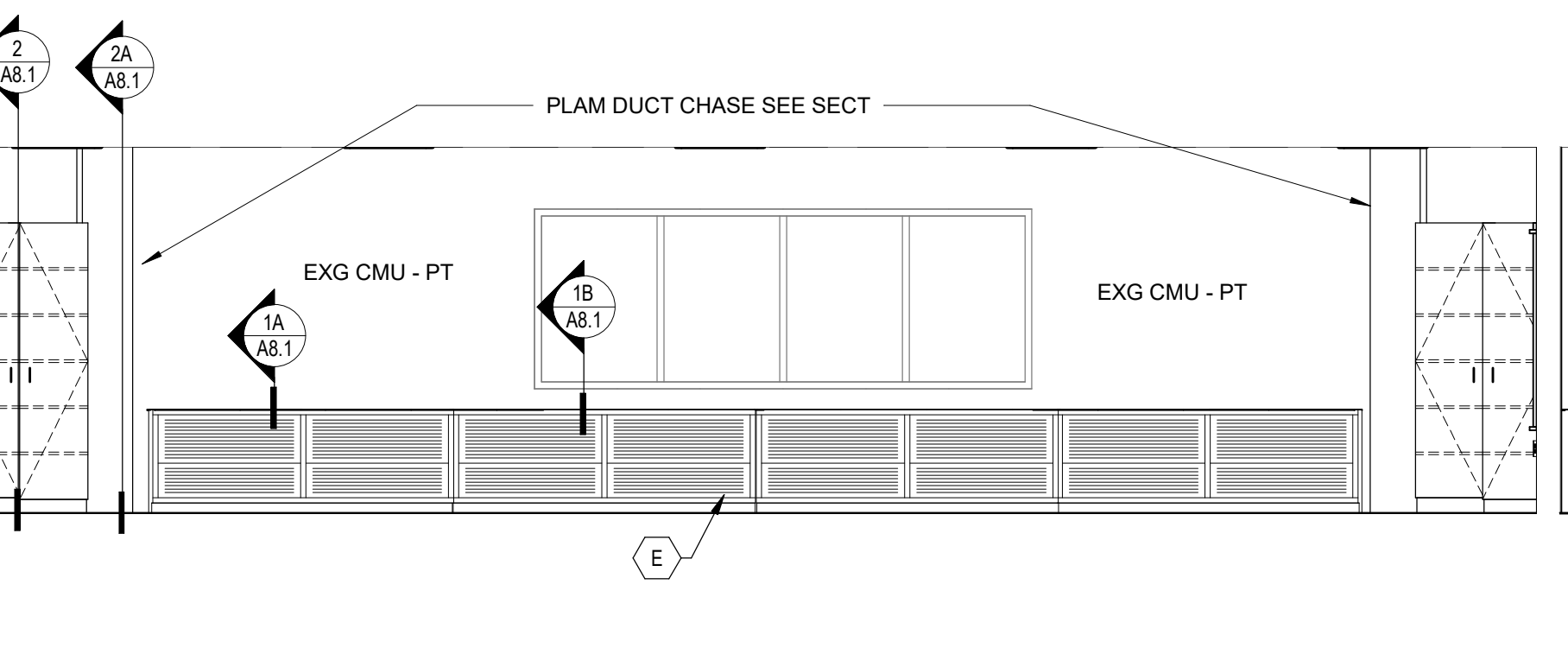
3B Elevation 108 N
 A11.2 1/4" = 1'-0"



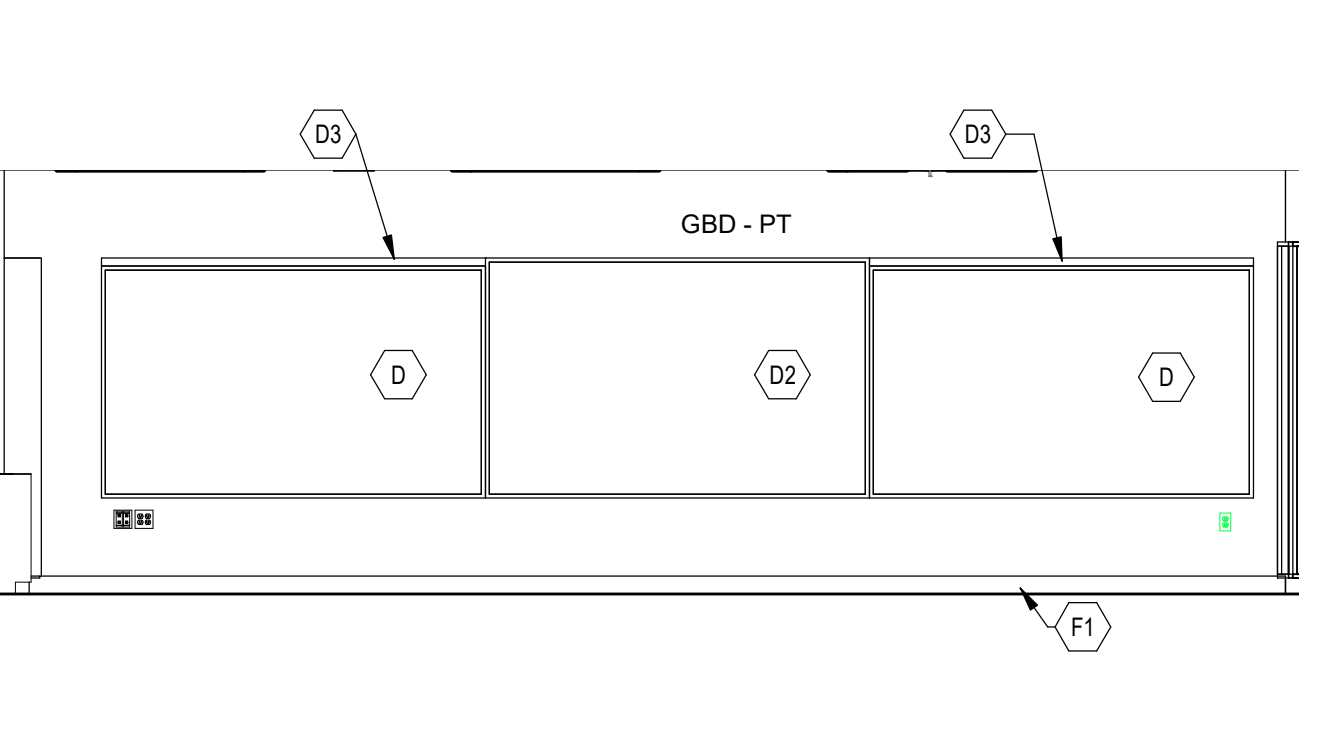
3C Elevation 108 E
 A11.2 1/4" = 1'-0"



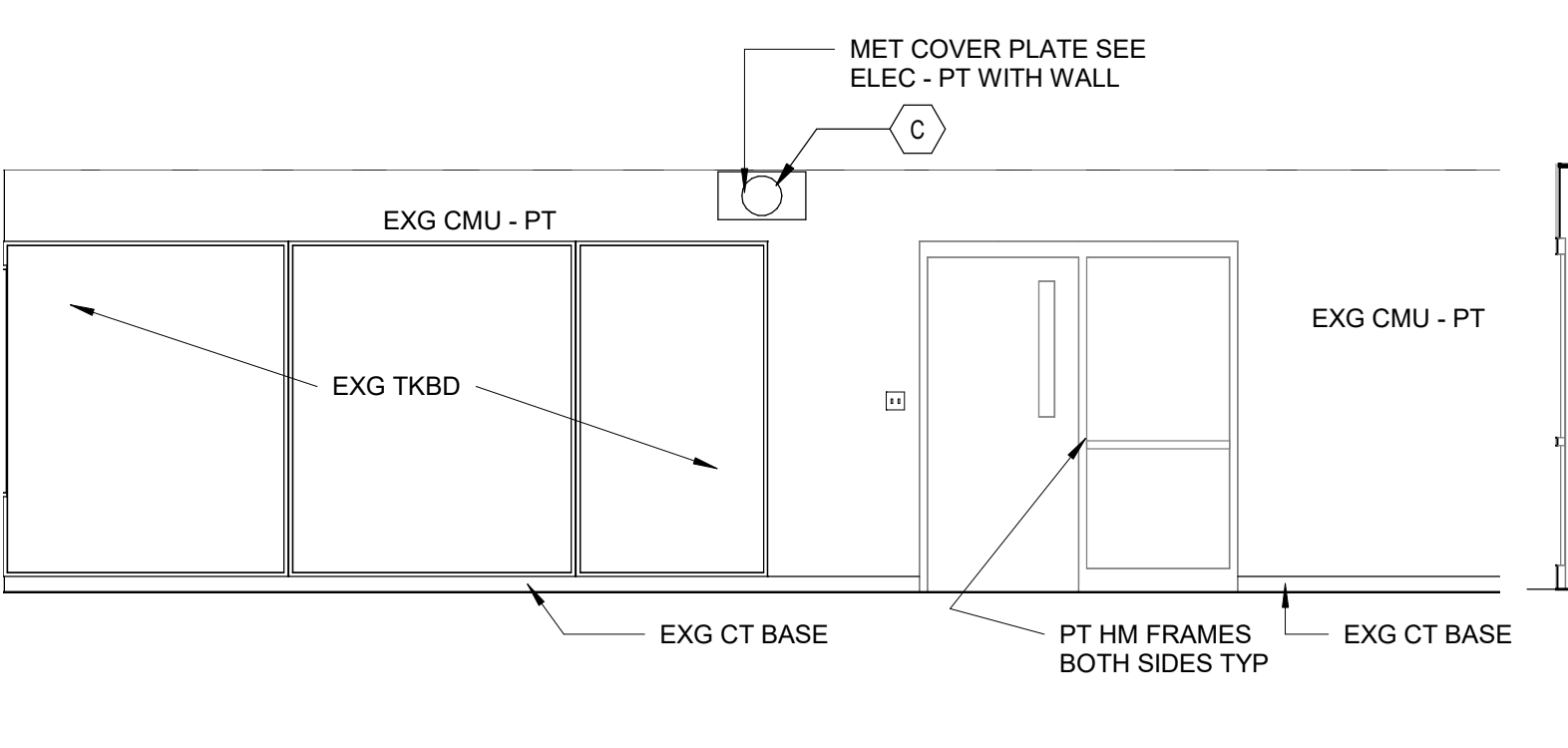
4 Elevation 108 S2
 A11.2 1/4" = 1'-0"



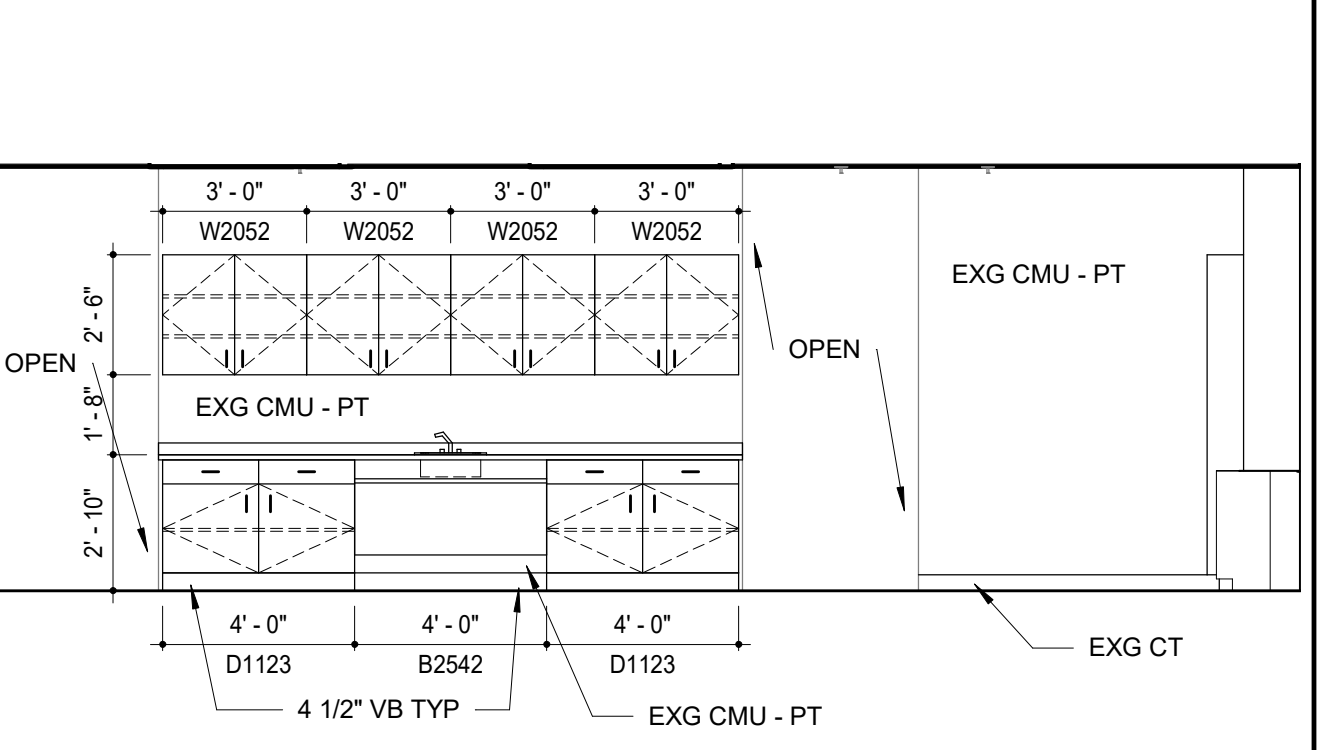
4A Elevation 105 W
 A11.2 1/4" = 1'-0"



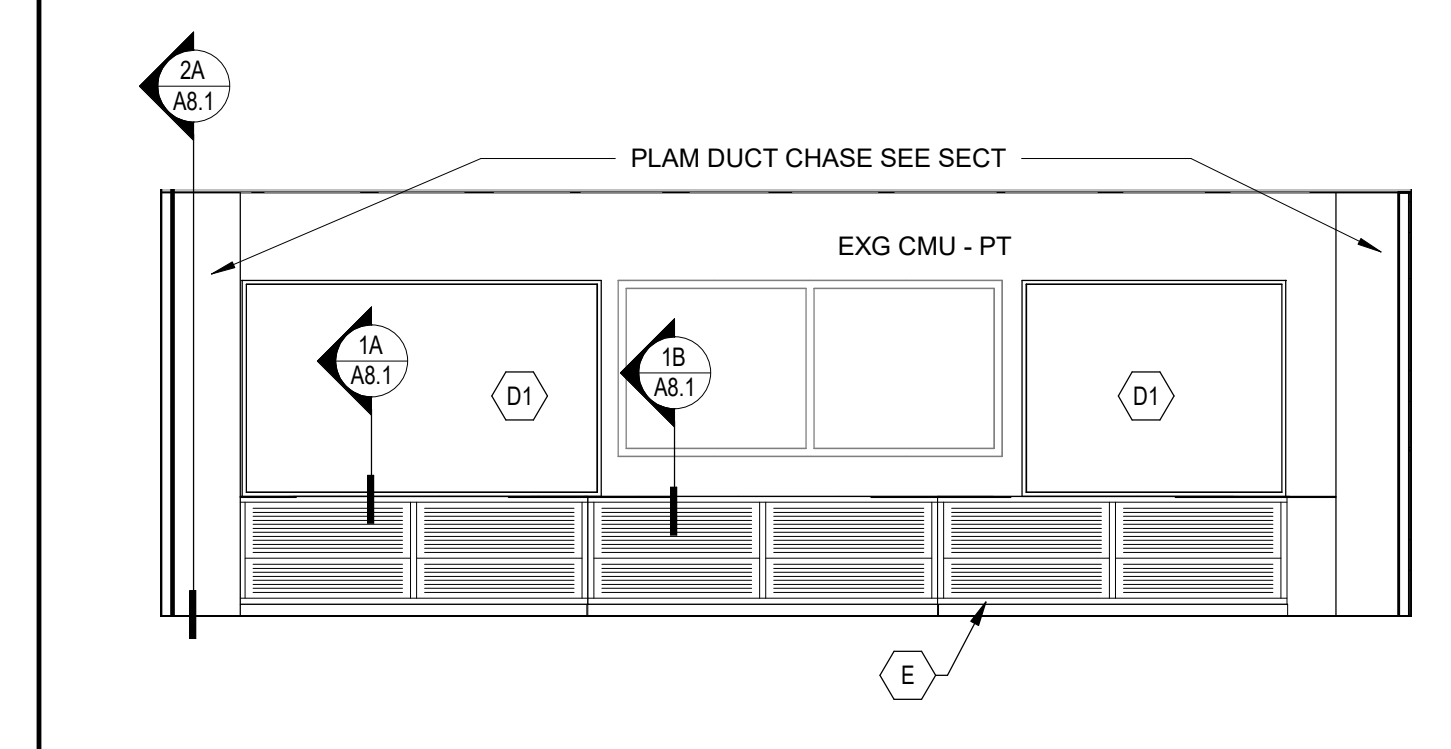
4B Elevation 105 N
 A11.2 1/4" = 1'-0"



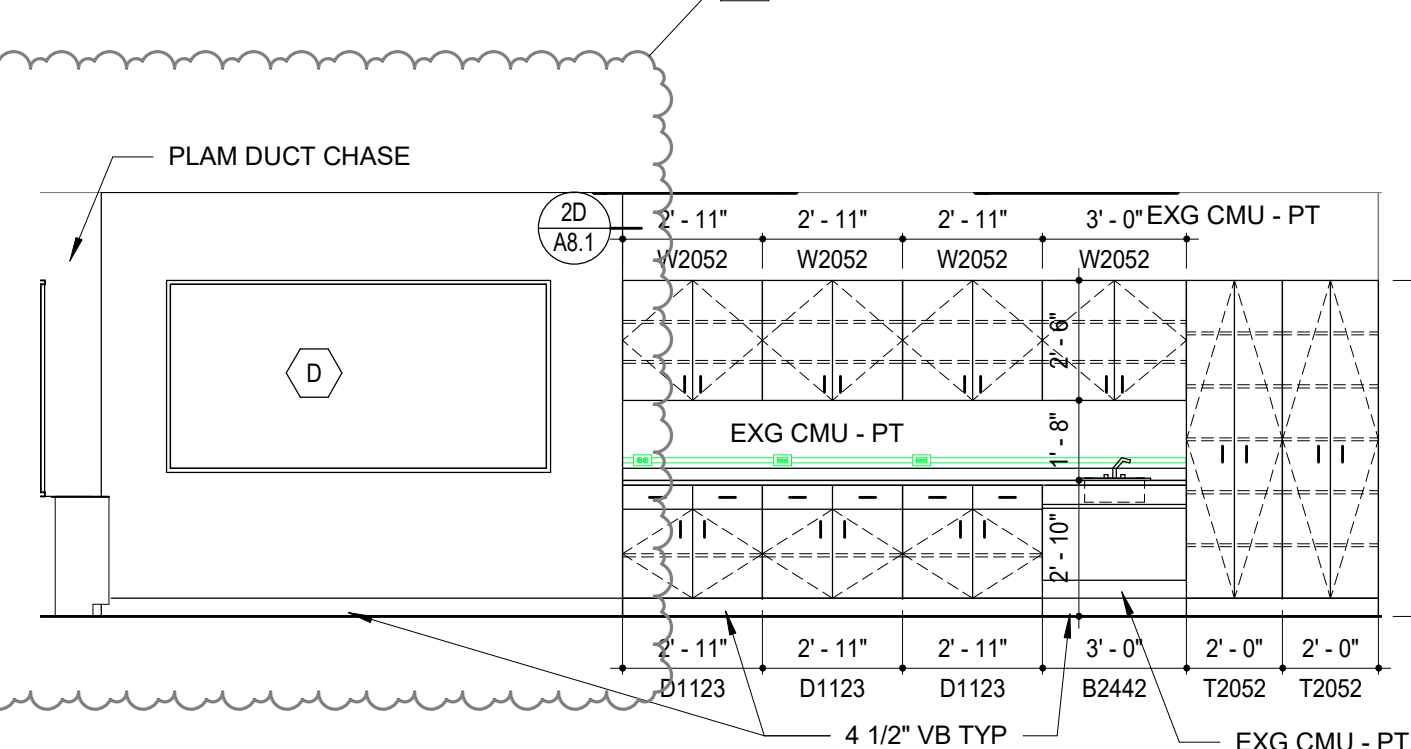
4C Elevation 105 E
 A11.2 1/4" = 1'-0"



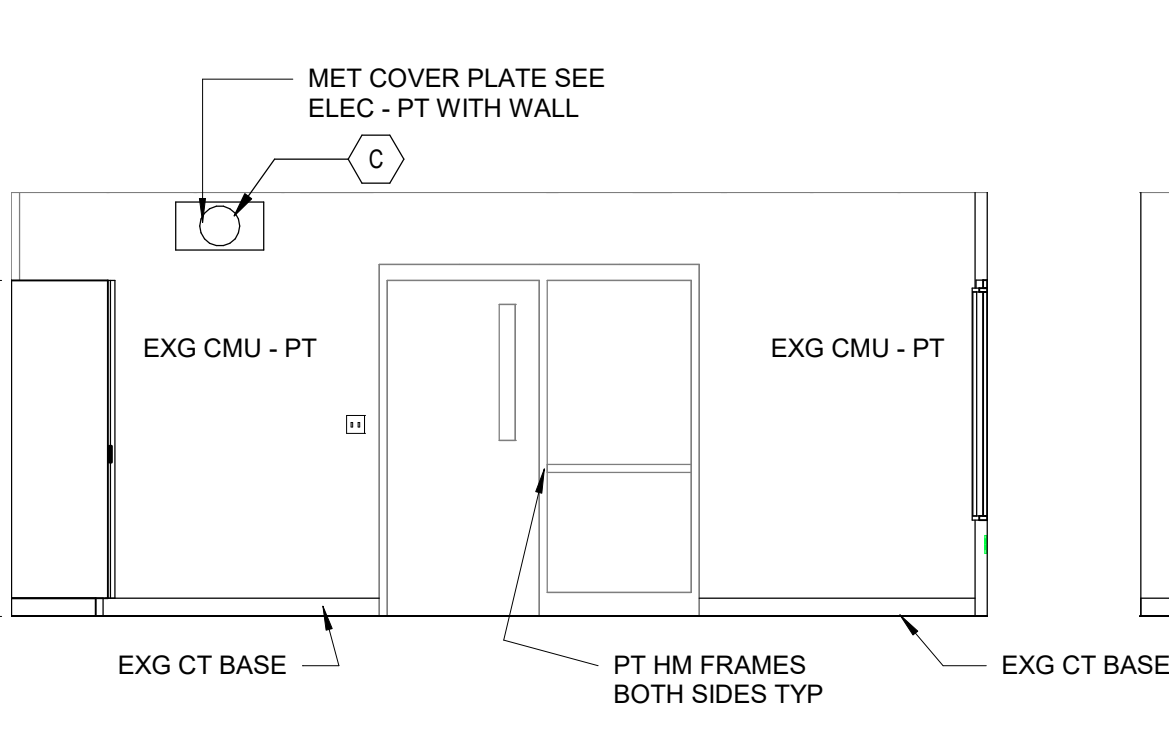
4D Elevation 105 S
 A11.2 1/4" = 1'-0"



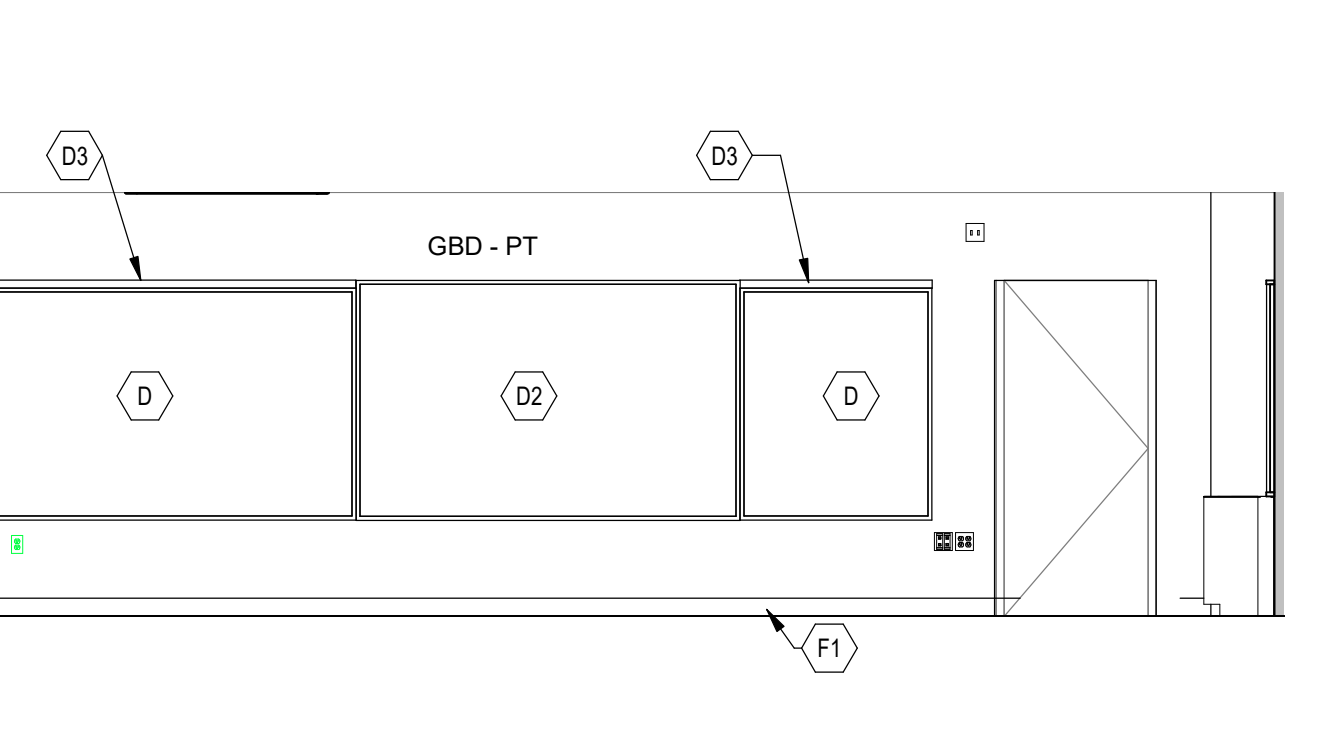
5 Elevation 104 S
 A11.2 1/4" = 1'-0"



5A Elevation 104 W
 A11.2 1/4" = 1'-0"



5B Elevation 104 N
 A11.2 1/4" = 1'-0"



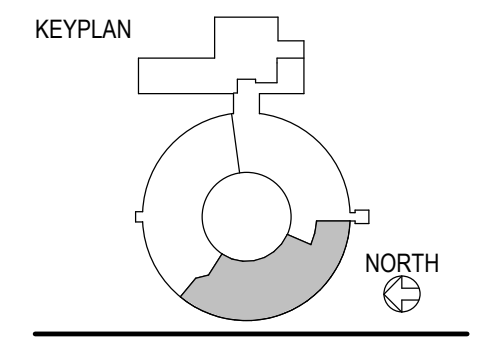
5C Elevation 104 E
 A11.2 1/4" = 1'-0"

INTERIOR ELEVATION NOTES

- (A) NOT USED
- (B) OWNER TO REMOVE AND REINSTALL EXG PROJECTOR AFTER WORK
- (B1) NEW CEILING MOUNTED PROJECTOR. COORD W/ ELECT.
- (C) INSTALL WALL MOUNTED CLOCK
- (D) PROVIDE MARKERBOARD
- (D1) EXG TACKBOARD CLEANLY CUT TO ACCOMMODATE TALL CABINET INSTALL
- (D2) EXG PROJECTION BOARD RE-INSTALLED BY GC
- (D3) PROVIDE TACK STRIP
- (D4) PROVIDE TACKBOARD
- (E) NEW DISPLACEMENT TERMINAL UNIT - COORDINATE LOCATION WITH MECH
- (E1) FIN-TUBE RADIATION UNIT. COORDINATE WITH MECH
- (F1) 4" VINYL BASE
- (F2) EXG CT BASE
- (F3) EXG CT WAJNSCOT
- (G) NOT USED
- (H) ADA SINK - REFER TO DETAIL 1/A8.1 FOR ADDITIONAL INFO

SIGNATURE / SEAL
 I hereby certify that this plan, specification, or report was prepared by me or under my direct supervision and that I am a duly licensed Architect under the laws of the State of Minnesota.

Signature: *David M. Maroney*
 David M. Maroney, AIA
 Type and printed name
 October 27, 2021
 Date
 20992
 License Number



DRAWN BY
 MB

CHECKED BY
 DMM

ISSUED FOR
 CONSTRUCTION
 DOCUMENTS
 ISSUE DATE
 OCTOBER 27, 2021

SHEET NAME
 INTERIOR
 ELEVATIONS

ATSR PROJECT NO.
 19039.2

REVISION NO.
 2

SHEET NUMBER

**CROOKED LAKE
 ELEMENTARY SCHOOL**
 HVAC Replacement and Deferred
 Maintenance - Phase 3
 Anoka-Hennepin Schools I.S.D. No. 11
 2939 Bunker Lake Blvd NW
 Andover, MN 55304