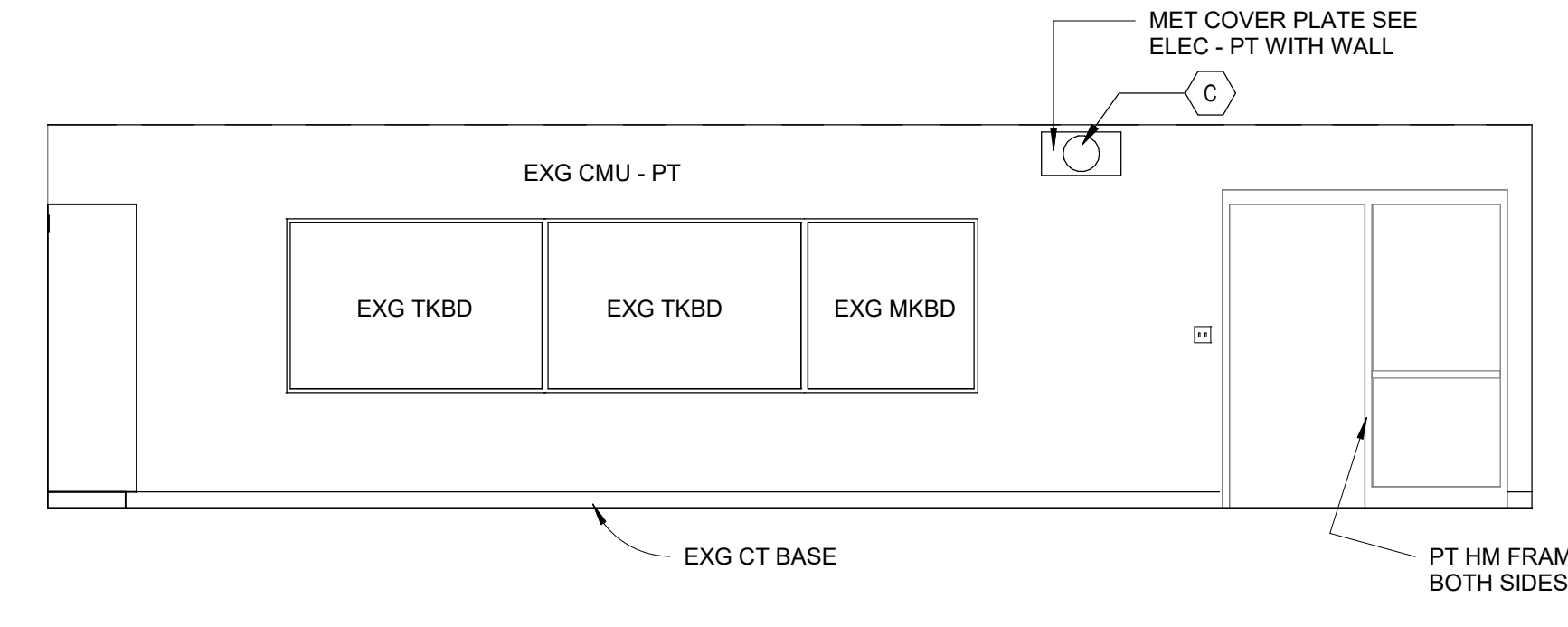
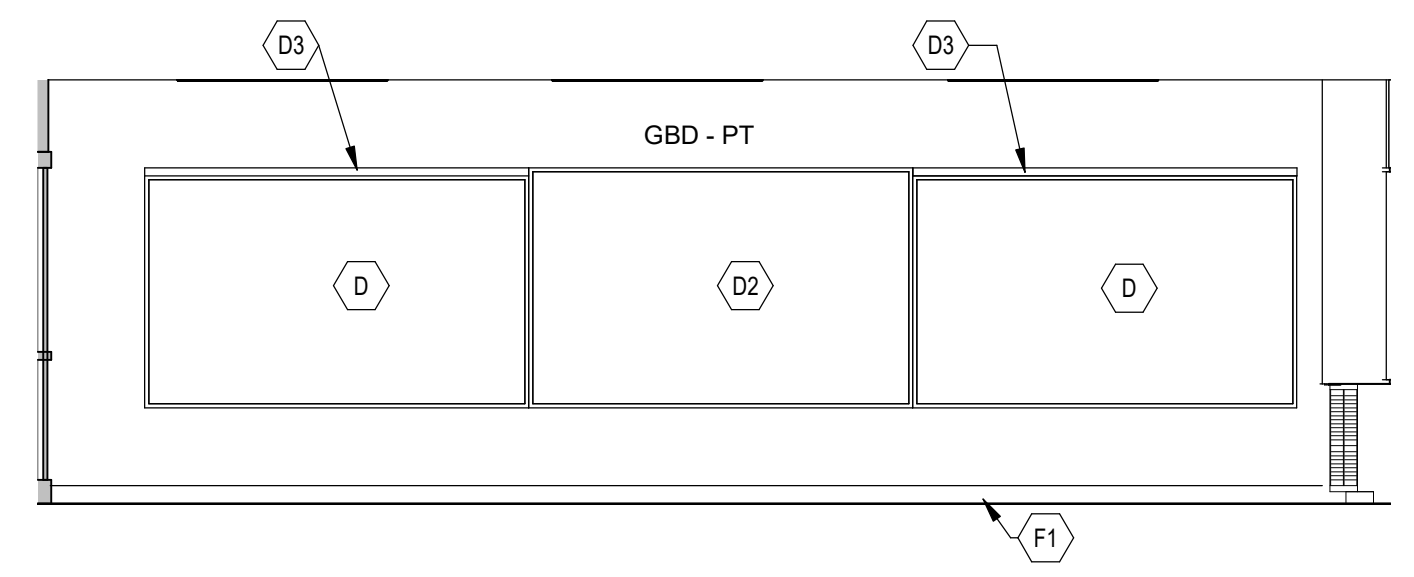


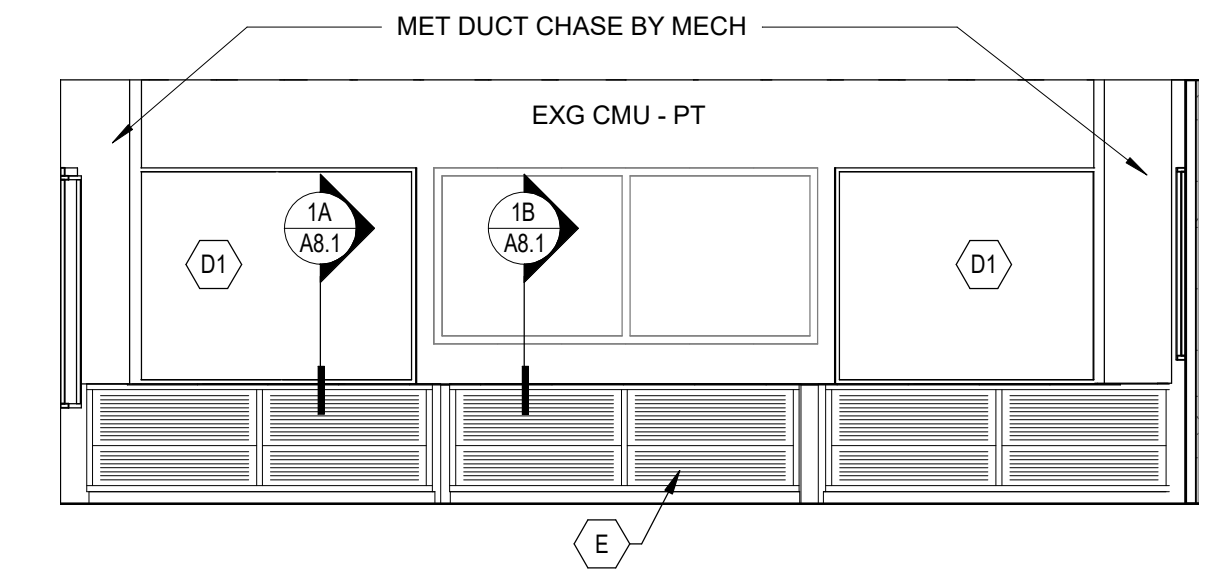
1 Elevation 106 E  
 A11.1 1/4" = 1'-0"



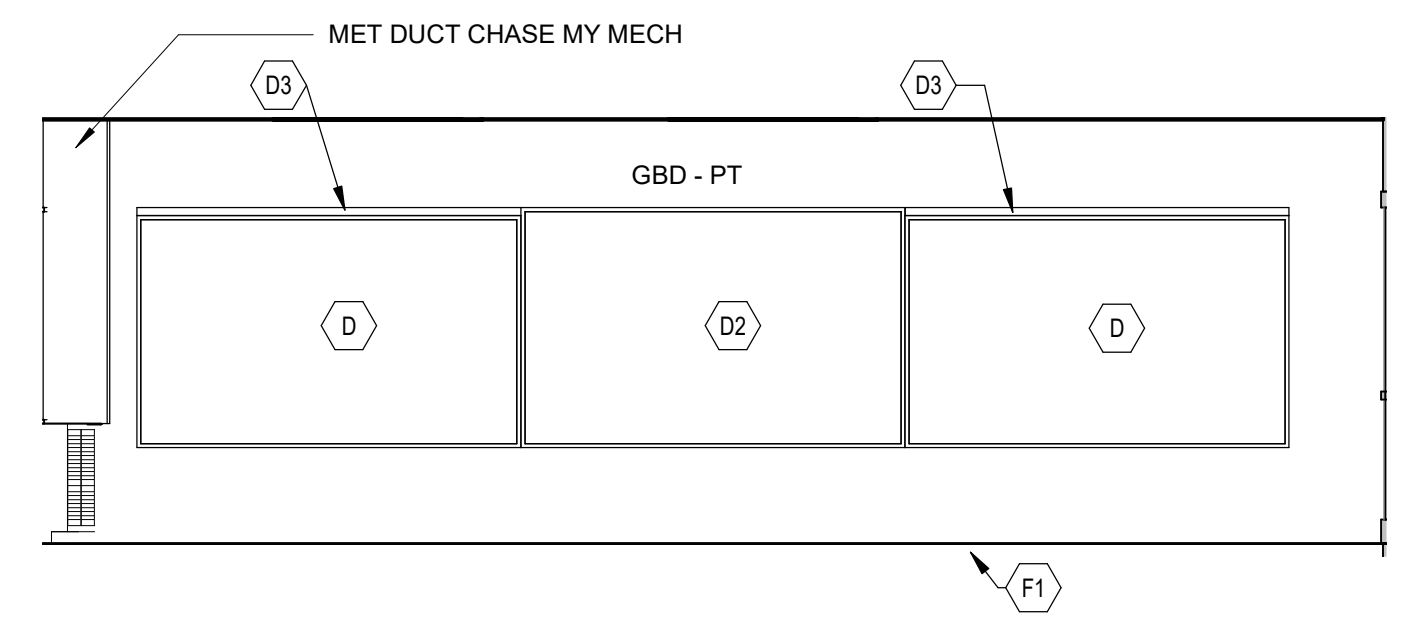
1A Elevation 106 S  
 A11.1 1/4" = 1'-0"



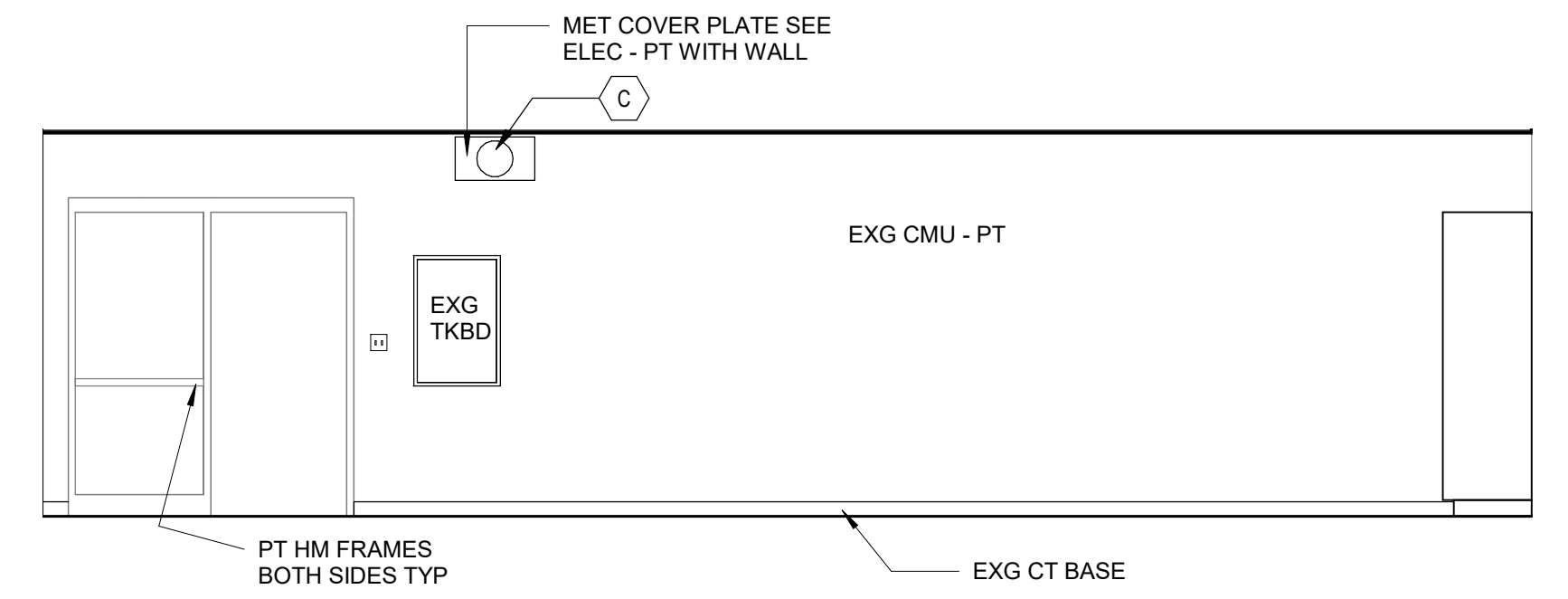
1B Elevation 106 W  
 A11.1 1/4" = 1'-0"



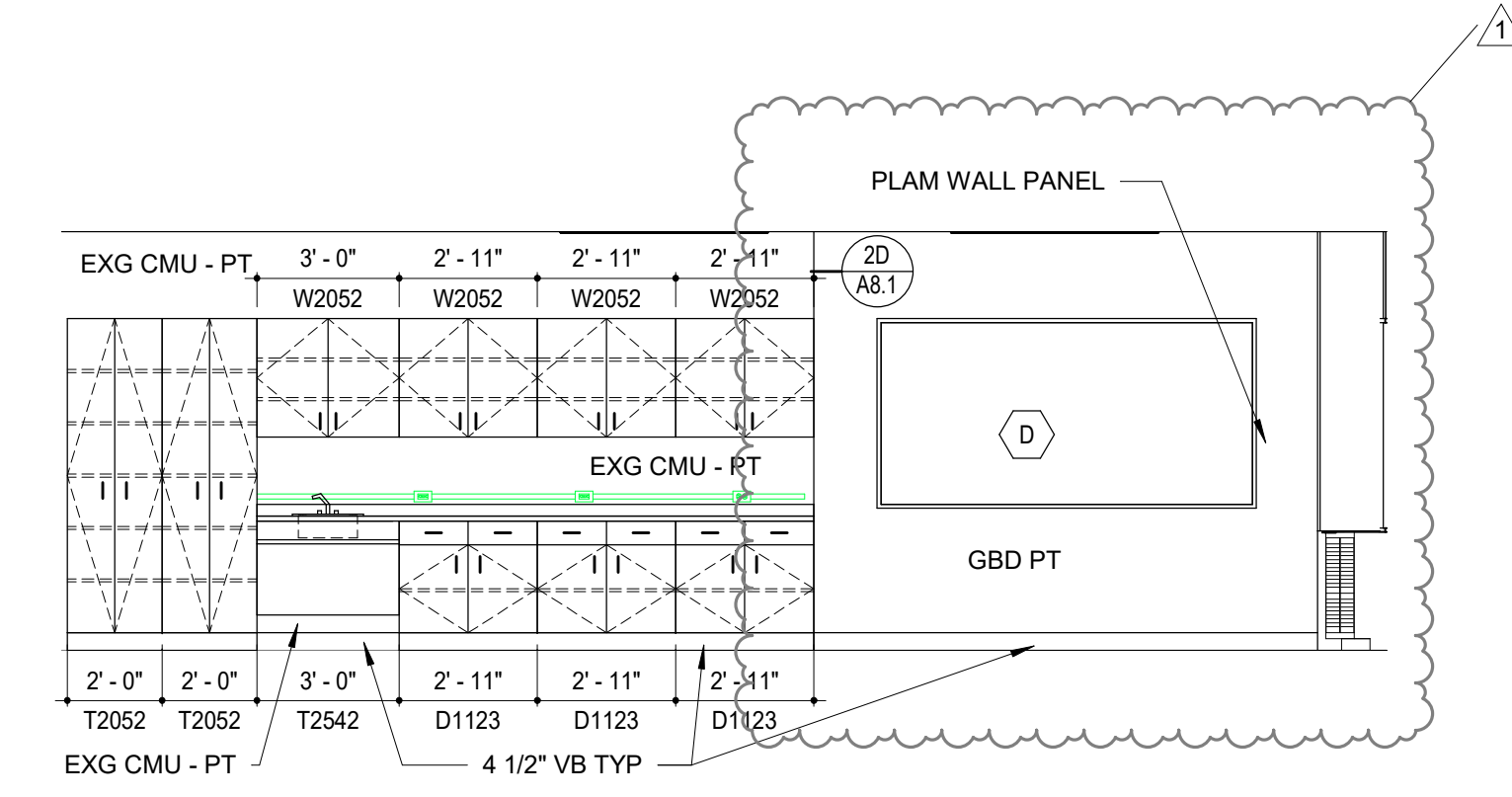
1C Elevation 106 N  
 A11.1 1/4" = 1'-0"



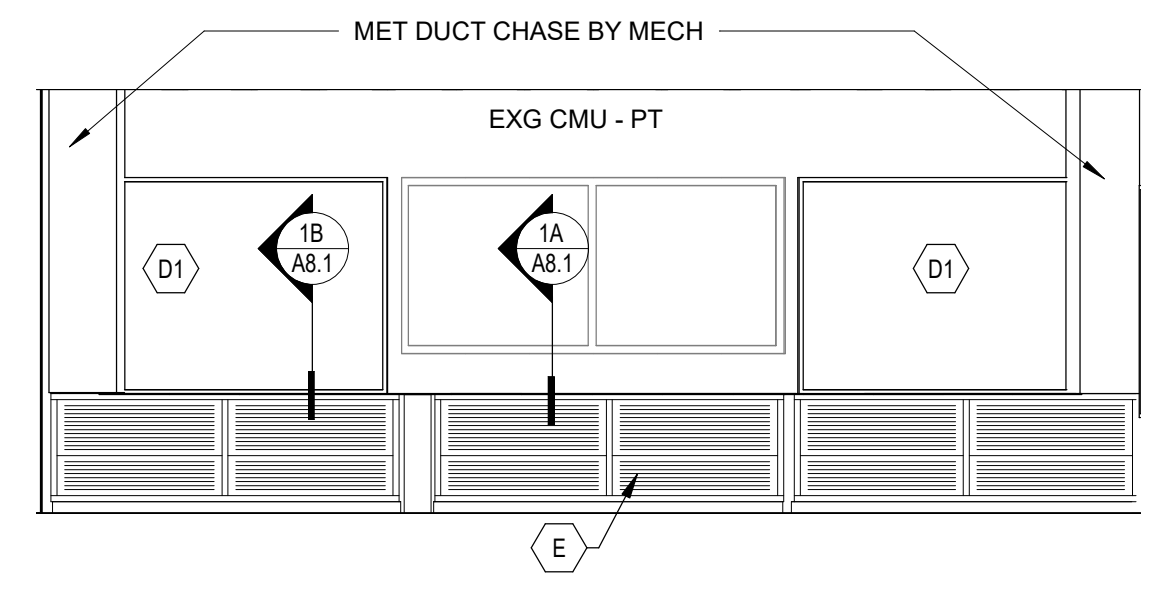
2 Elevation 107 S  
 A11.1 1/4" = 1'-0"



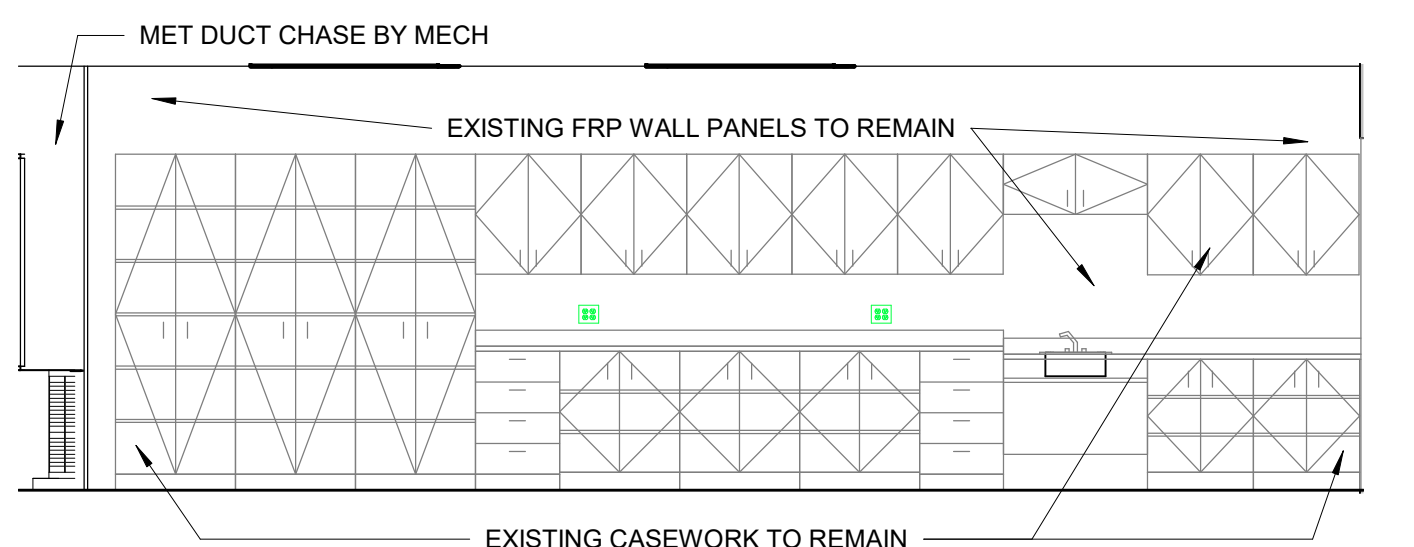
2A Elevation 107 W  
 A11.1 1/4" = 1'-0"



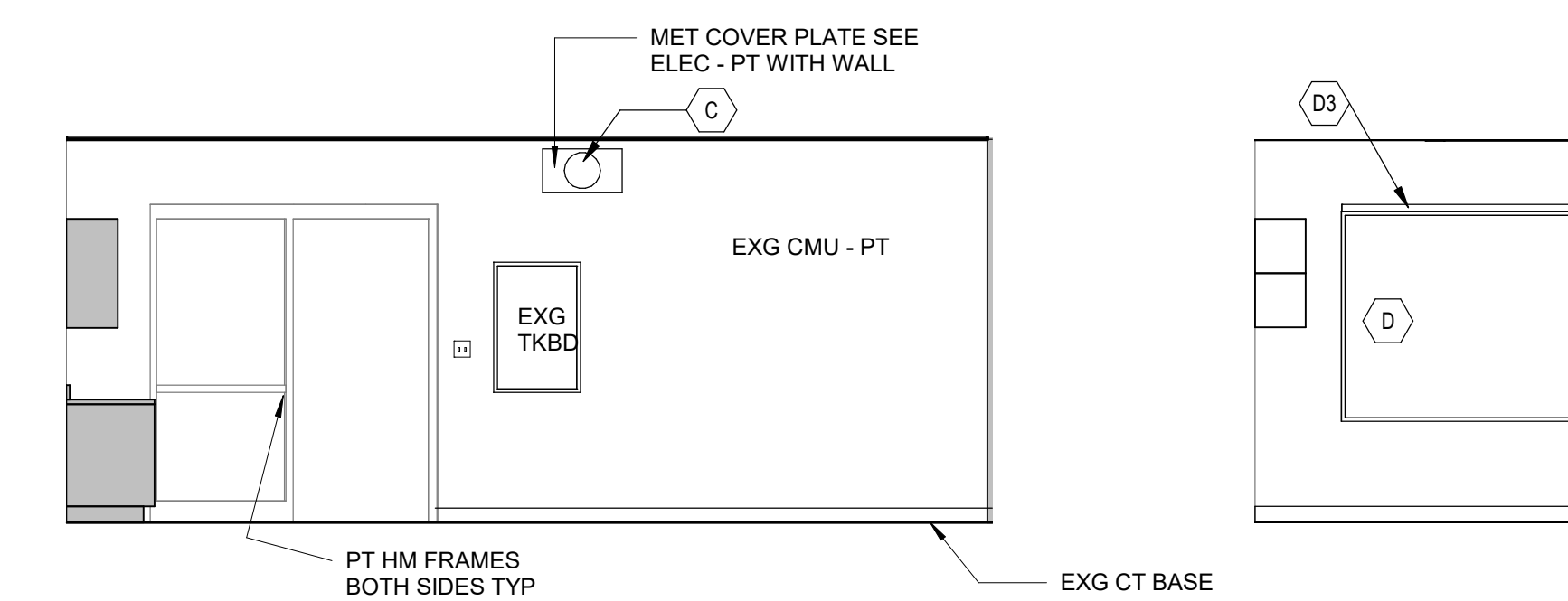
2B Elevation 107 N  
 A11.1 1/4" = 1'-0"



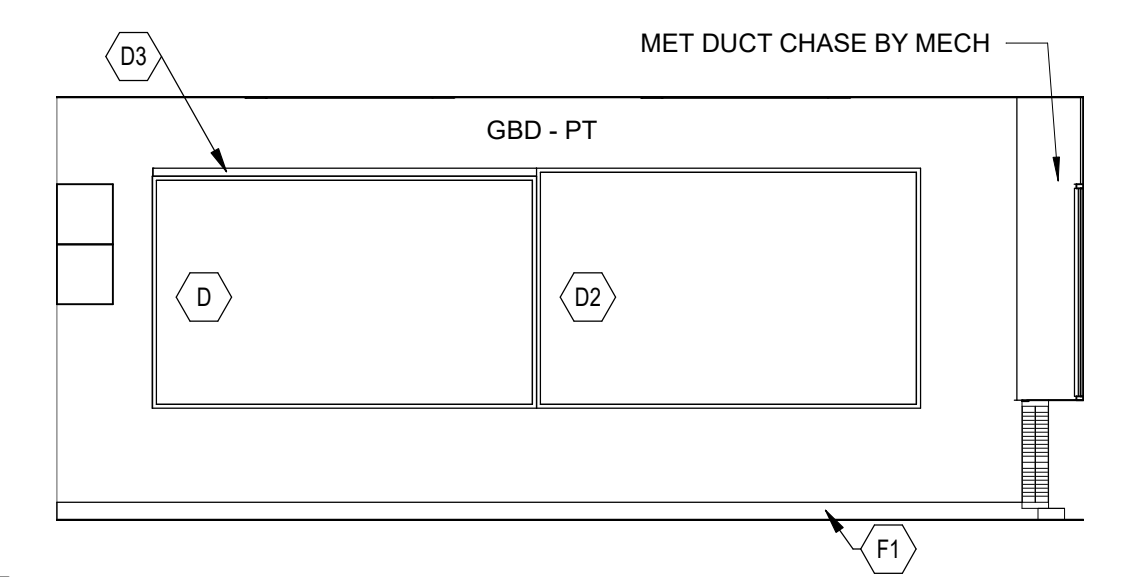
2C Elevation 107 E  
 A11.1 1/4" = 1'-0"



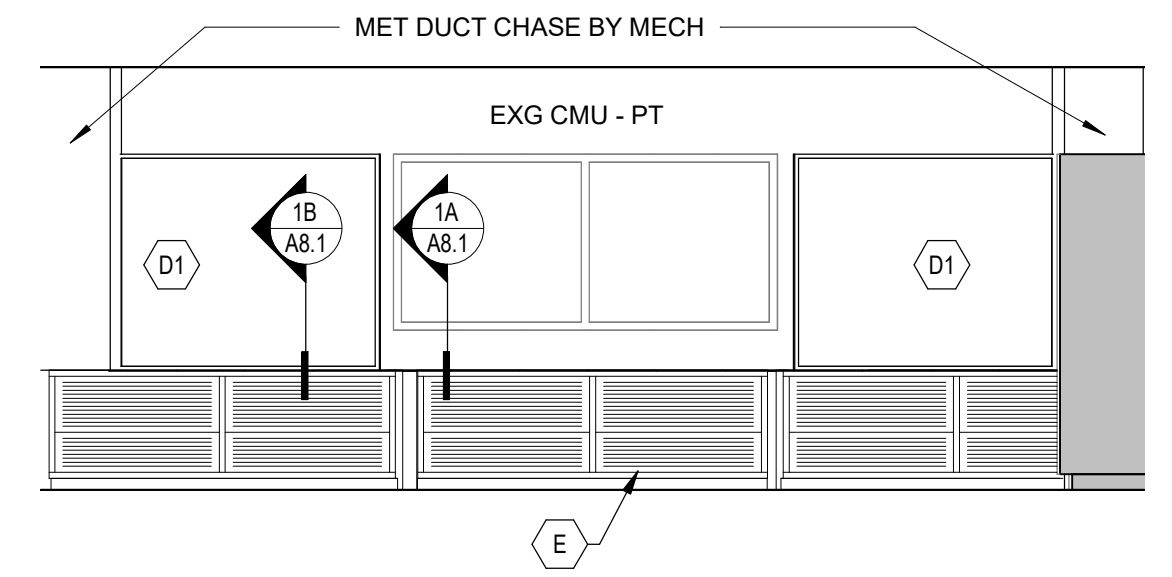
3 Elevation 110 S  
 A11.1 1/4" = 1'-0"



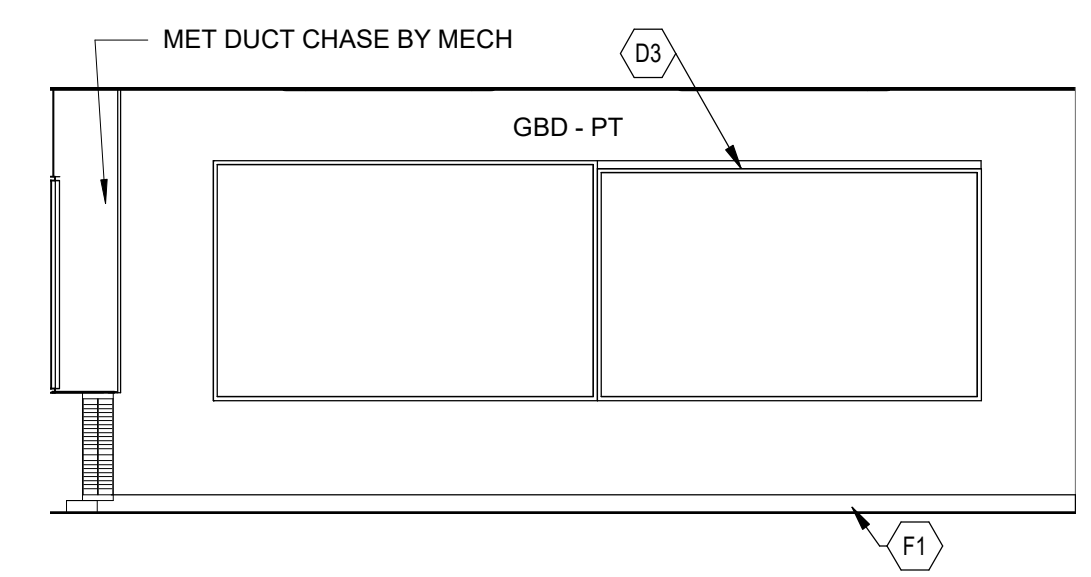
3A Elevation 110 W  
 A11.1 1/4" = 1'-0"



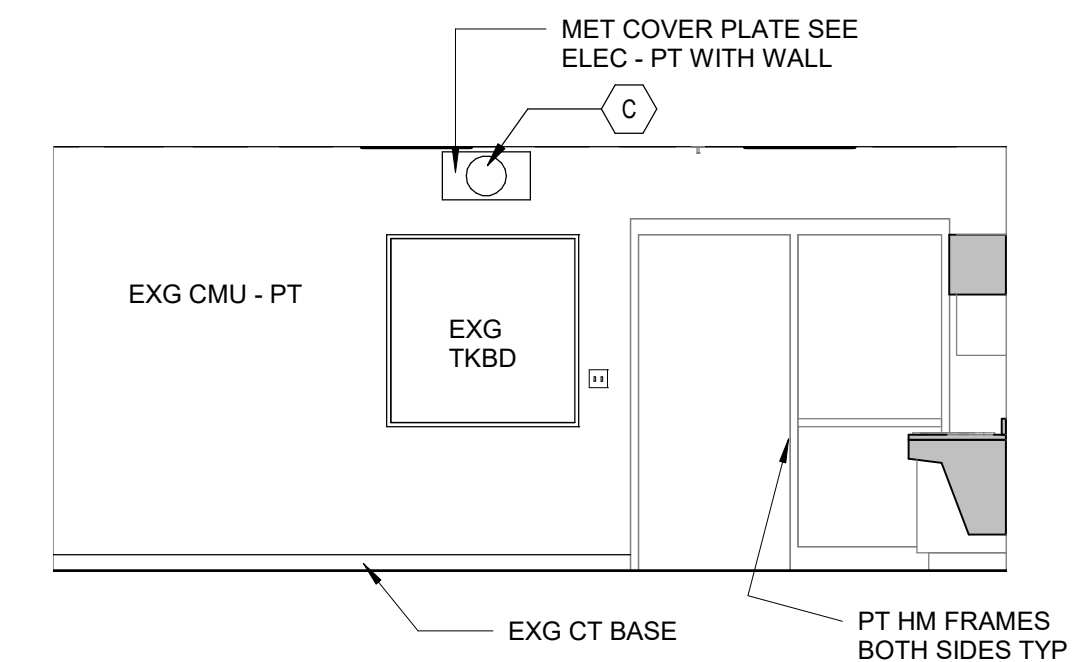
3B Elevation 110 N  
 A11.1 1/4" = 1'-0"



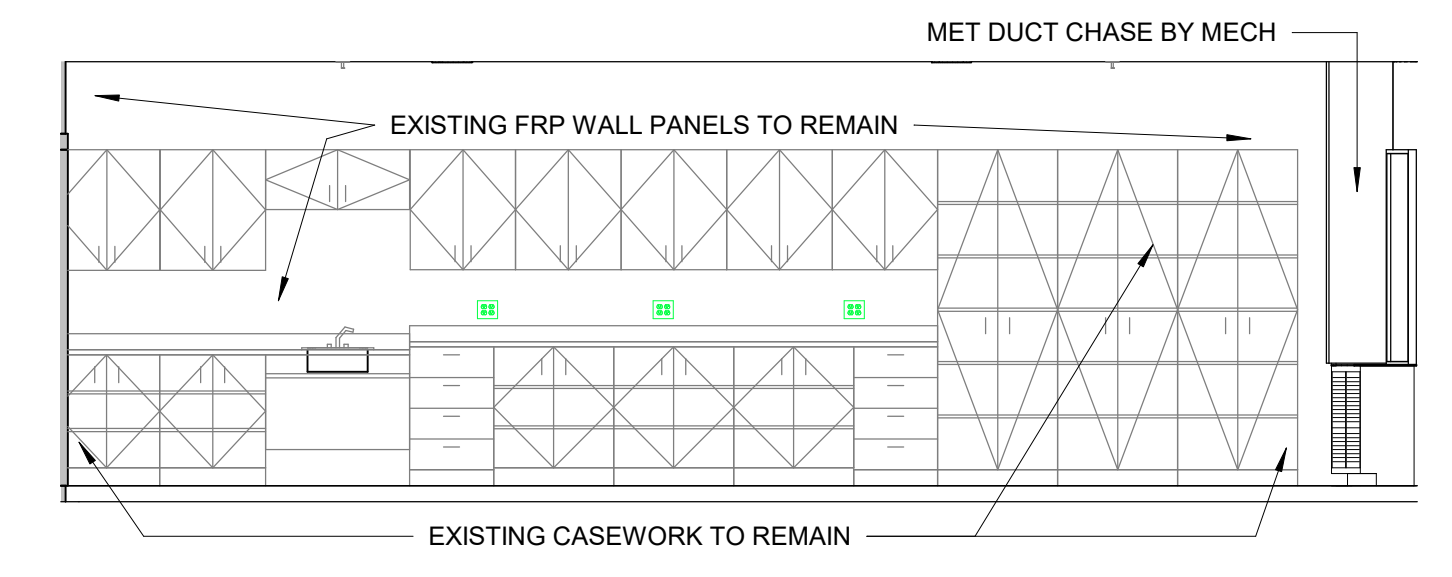
3C Elevation 110 E  
 A11.1 1/4" = 1'-0"



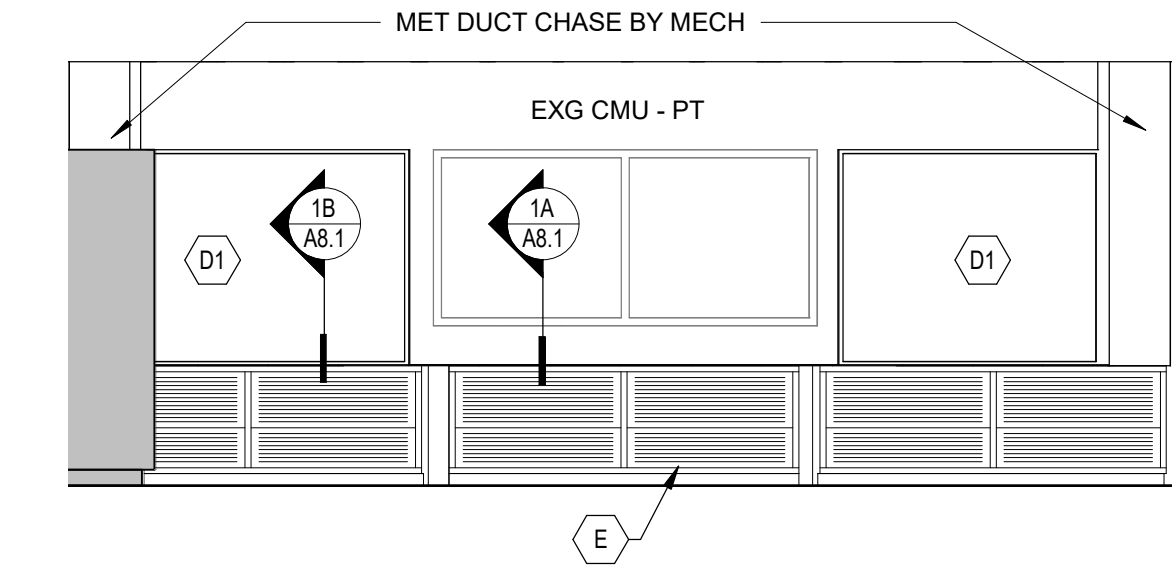
4 Elevation 113 S  
 A11.1 1/4" = 1'-0"



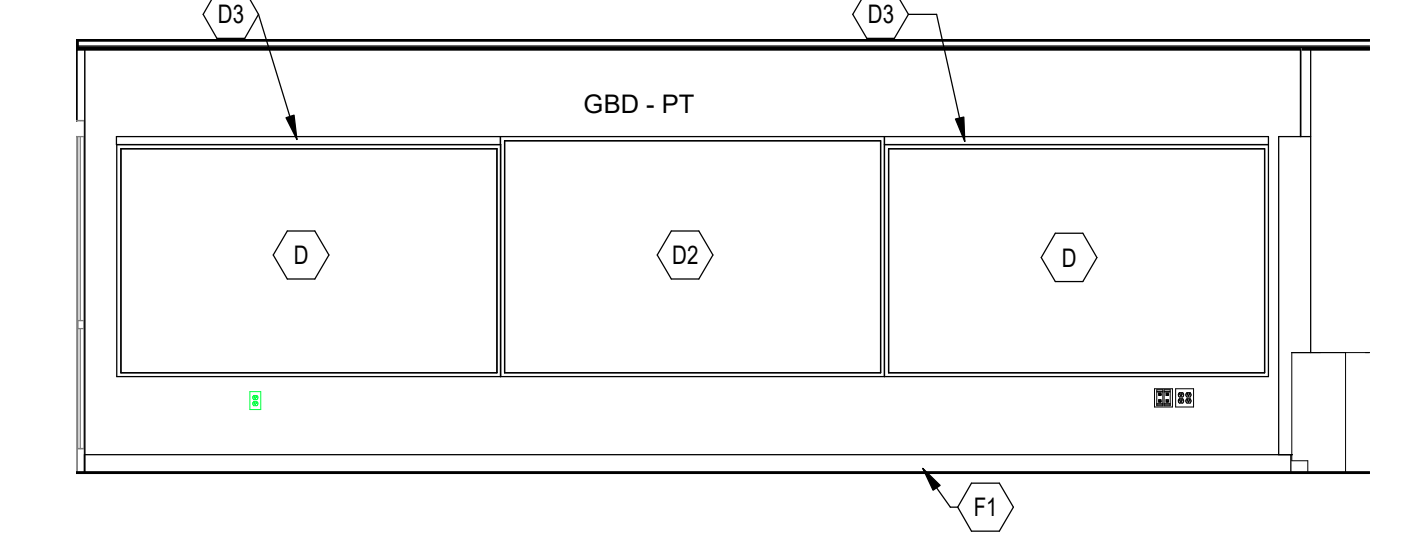
4A Elevation 113 W  
 A11.1 1/4" = 1'-0"



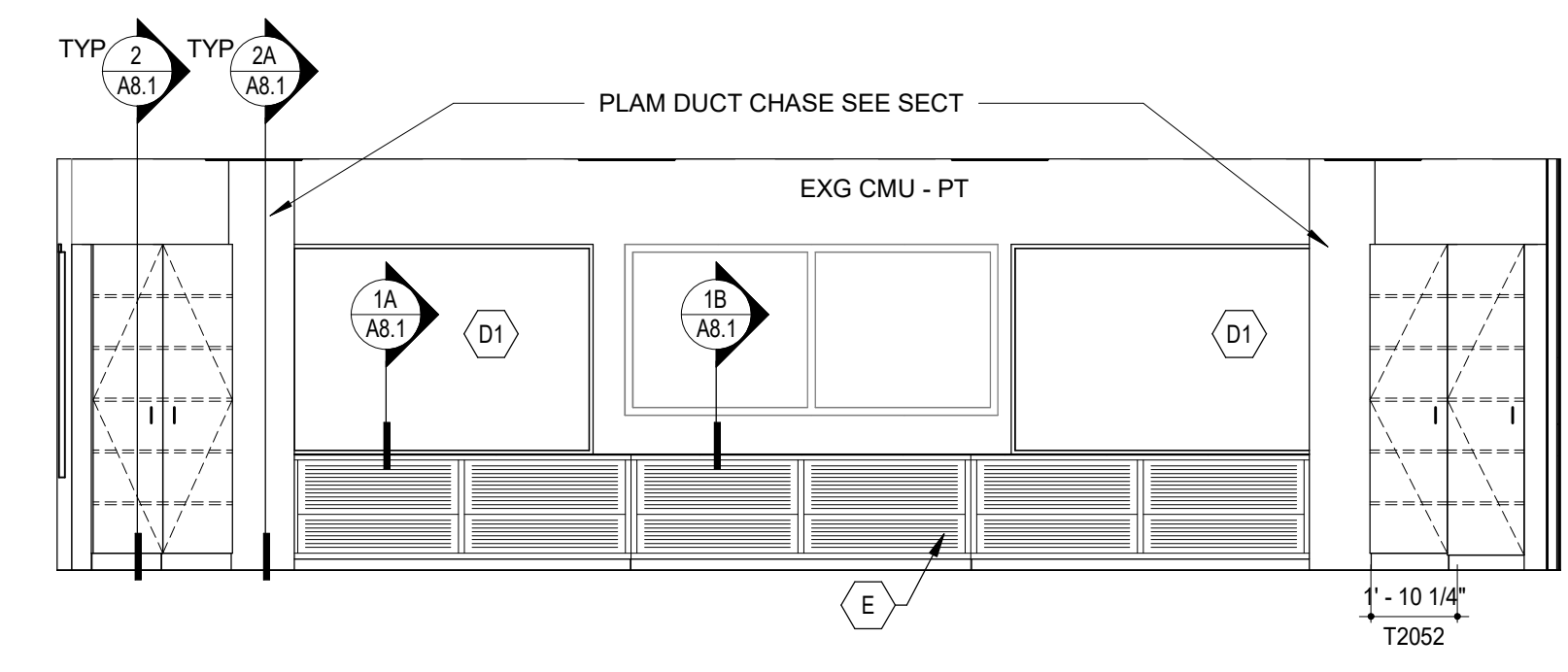
4B Elevation 113 N  
 A11.1 1/4" = 1'-0"



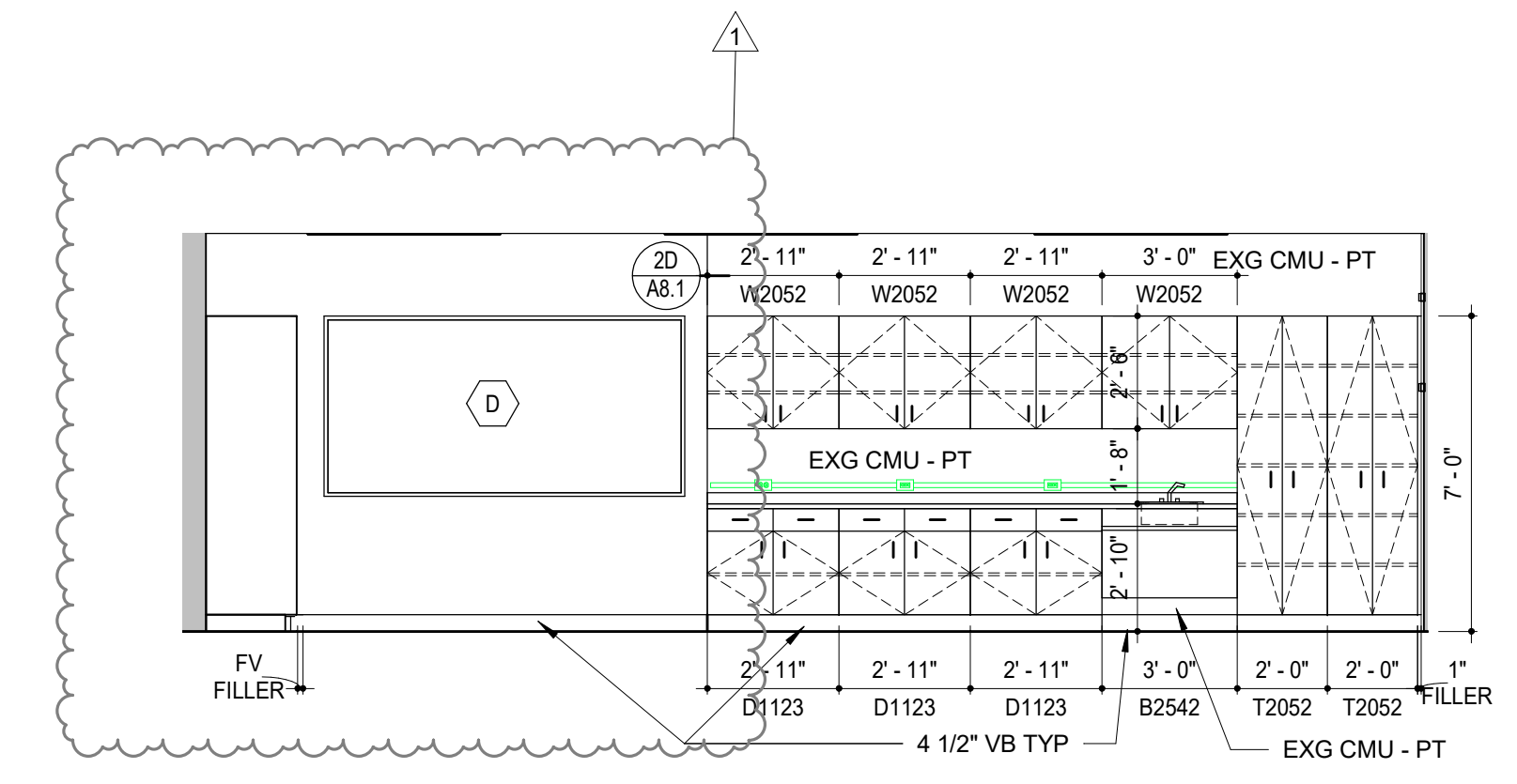
4C Elevation 113 E  
 A11.1 1/4" = 1'-0"



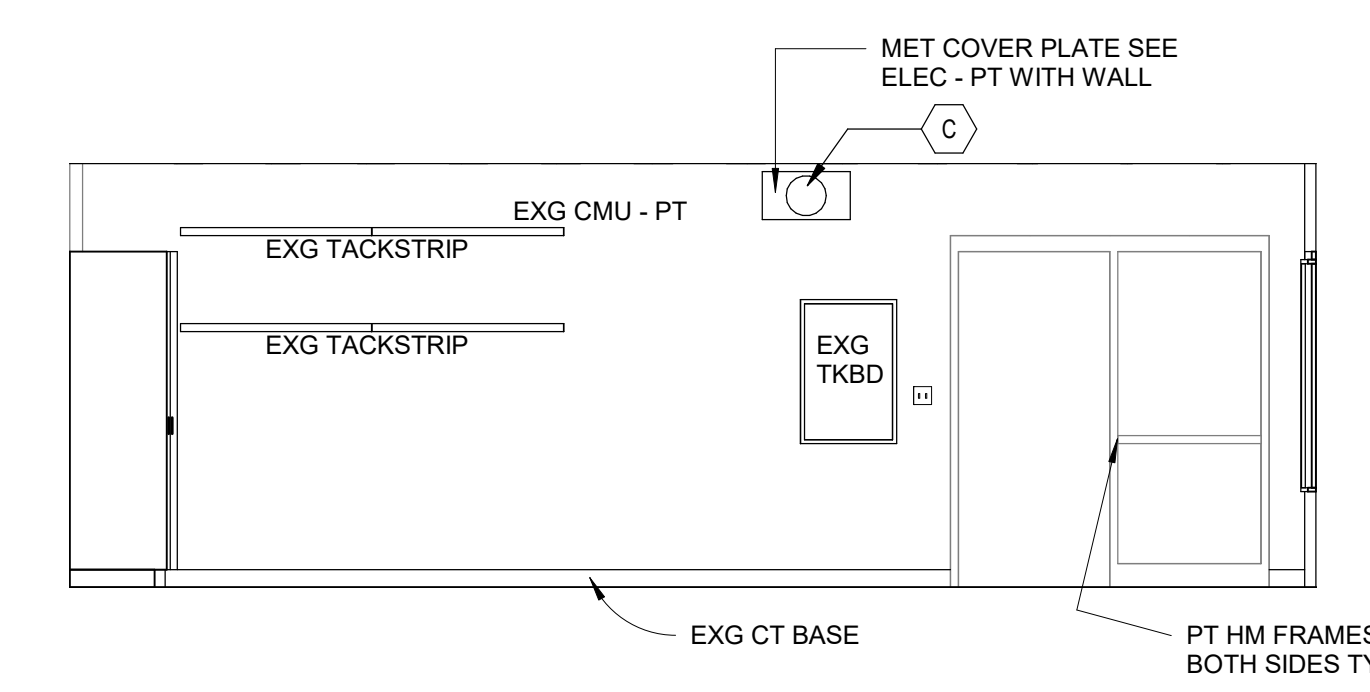
5 Elevation 112 S  
 A11.1 1/4" = 1'-0"



5A Elevation 112 W  
 A11.1 1/4" = 1'-0"



5B Elevation 112 N  
 A11.1 1/4" = 1'-0"



5C Elevation 112 E  
 A11.1 1/4" = 1'-0"

GENERAL CASEWORK NOTES:

- NOTE: ALL CASEWORK BY OWNER (N.I.C)
- CASEWORK NUMBERS ARE LISTED WITH TMI CORPORATION (UON).
  - PROVIDE 4 1/2" TOE KICK UON
  - 4 1/2" VINYL BASE ON ALL EXPOSED SIDES OF CASEWORK BY RESILIENT FLOOR SUPPLIER (UON).
  - COUNTERTOPS TO BE PLAM WITH 3" HIGH BACKSPLASH AND ENDSPLASH AT ALL VERTICAL SURFACES (UON)
  - USE SCRIBE STRIP ON ALL CASEWORK WHERE IT MEETS A WALL.
  - CASEWORK ENDS AND BACKS SHALL BE FINISHED WHERE EXPOSED TO VIEW.
  - MECHANICAL TO ROUGH-IN AND HOOK-UP FOR ALL SINKS AND FIXTURES PROVIDED BY CASEWORK MANUFACTURER.
  - ELECTRICAL TO PROVIDE CONNECTION TO ANY ELECTRICAL DEVICES PROVIDED BY CASEWORK MANUFACTURER.
  - CASEWORK INSTALLER TO PROVIDE CUTOOUT IN BACK OF CABINET AS NEEDED TO PROTECT CASEWORK DOOR AND HINGE.
  - CASEWORK INSTALLER TO PROVIDE STOP CHAINS WHERE NEEDED TO PROTECT CABINET DOOR AND HINGE.
  - PROVIDE FILLER PANEL AT FRONT, TOP AND BOTTOM AS REQUIRED TO ENCLOSE SPACE. PANELS TO MATCH ADJACENT CABINET MATERIAL.
  - PROVIDE BLOCKING FOR CASEWORK LOCATED ON GBD/STL STUD WALL.
  - CASEWORK INSTALLER TO INSTALL ALL APPLIANCES SUPPLIED BY OWNER AS CALLED FOR ON CASEWORK ELEVATIONS. MECHANICAL AND ELECTRICAL TO PROVIDE CONNECTIONS AS REQUIRED.
  - PROVIDE LOCKS ON CABINET DOORS AND DRAWERS WHERE NOTED.
  - PROVIDE 1/4" KOROLATH SHIMS FOR ALL CABINETS AT FLOOR.

INTERIOR ELEVATION NOTES

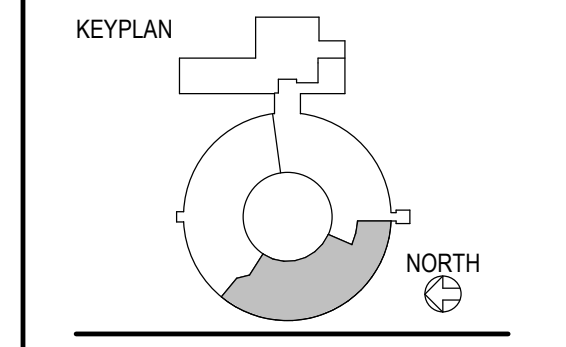
- (A) NOT USED
- (B) OWNER TO REMOVE AND REINSTALL EXG PROJECTOR AFTER WORK
- (B1) NEW CEILING MOUNTED PROJECTOR, COORD W/ ELECT.
- (C) INSTALL WALL MOUNTED CLOCK
- (D) PROVIDE MARKERBOARD
- (D1) EXG TACKBOARD CLEANLY CUT TO ACCOMMODATE TALL CABINET INSTALL
- (D2) EXG PROJECTION BOARD RE-INSTALLED BY GC
- (D3) PROVIDE TACK STRIP
- (D4) PROVIDE TACKBOARD
- (E) NEW DISPLACEMENT TERMINAL UNIT - COORDINATE LOCATION WITH MECH
- (E1) FIN-TUBE RADIATION UNIT. COORDINATE WITH MECH
- (F) 4" VINYL BASE
- (F1) EXG CT BASE
- (F2) EXG CT WAINGSCOT
- (G) NOT USED
- (H) ADA SINK - REFER TO DETAIL 1/A8.1 FOR ADDITIONAL INFO

REVISIONS	DESCRIPTION	DATE
REV NO 1	ADDENDUM #2	12/17/2021

**CROOKED LAKE  
 ELEMENTARY SCHOOL**  
 HVAC Replacement and Deferred  
 Maintenance - Phase 3  
 Anoka-Hennepin Schools I.S.D. No. 11  
 2939 Bunker Lake Blvd NW  
 Andover, MN 55304

SIGNATURE / SEAL  
 I hereby certify that this plan, specification, or report was prepared by me or under my direct supervision and that I am a duly licensed Architect under the laws of the State of Minnesota.

Signature: *David M. Maroney*  
 David M. Maroney, AIA  
 Typical or printed name: **October 27, 2021**  
 Date: **2021**  
 License Number:



DRAWN BY: **MB**  
 CHECKED BY: **DMM**

ISSUED FOR: **CONSTRUCTION DOCUMENTS**  
 ISSUE DATE: **OCTOBER 27, 2021**

SHEET NAME: **INTERIOR ELEVATIONS**

ATSR PROJECT NO: **19039.2**

REVISION NO: **1**  
 SHEET NUMBER