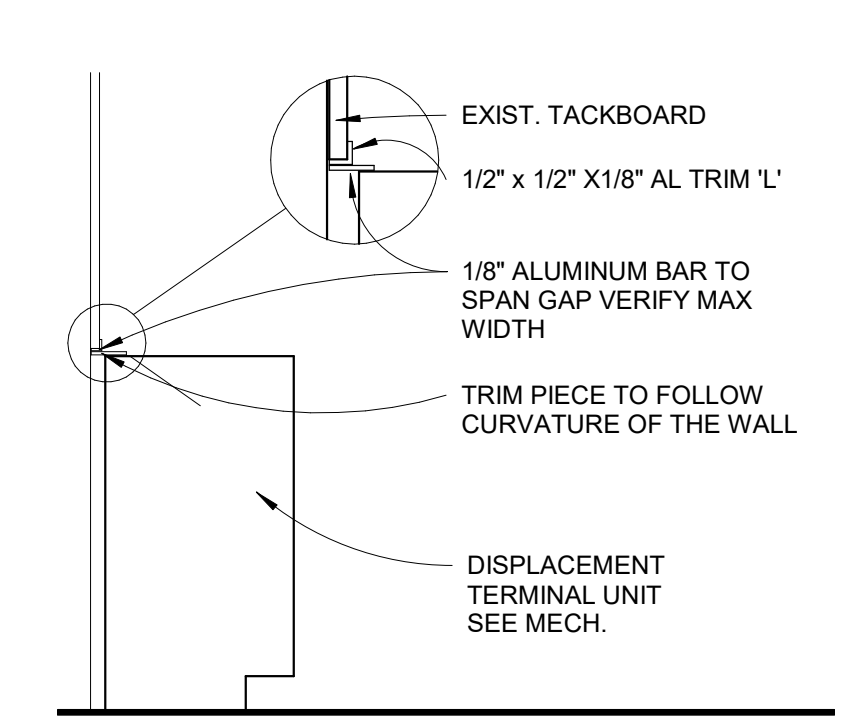
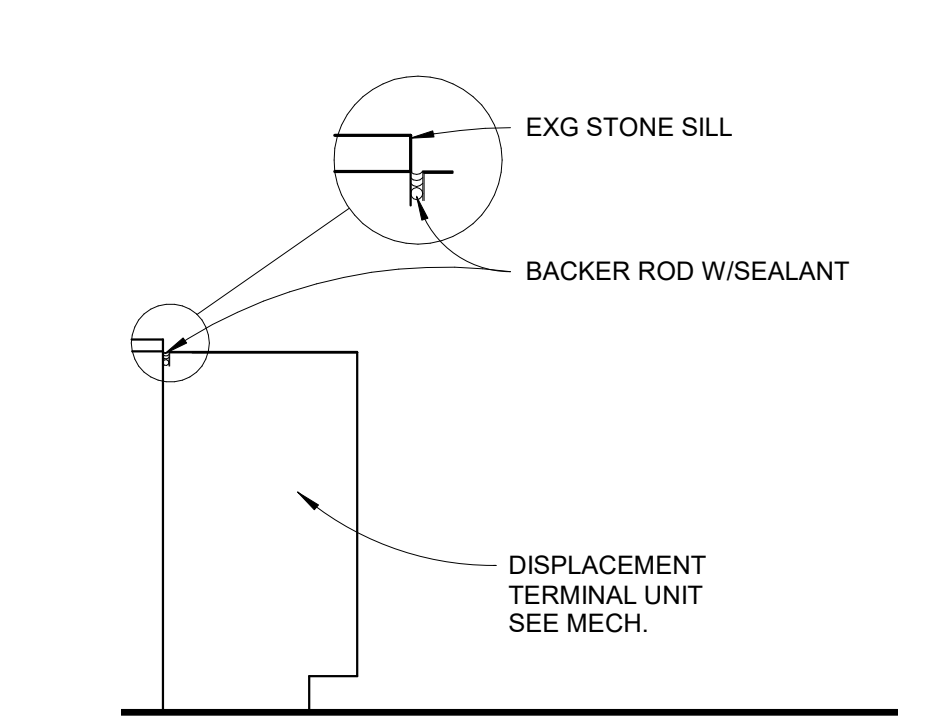


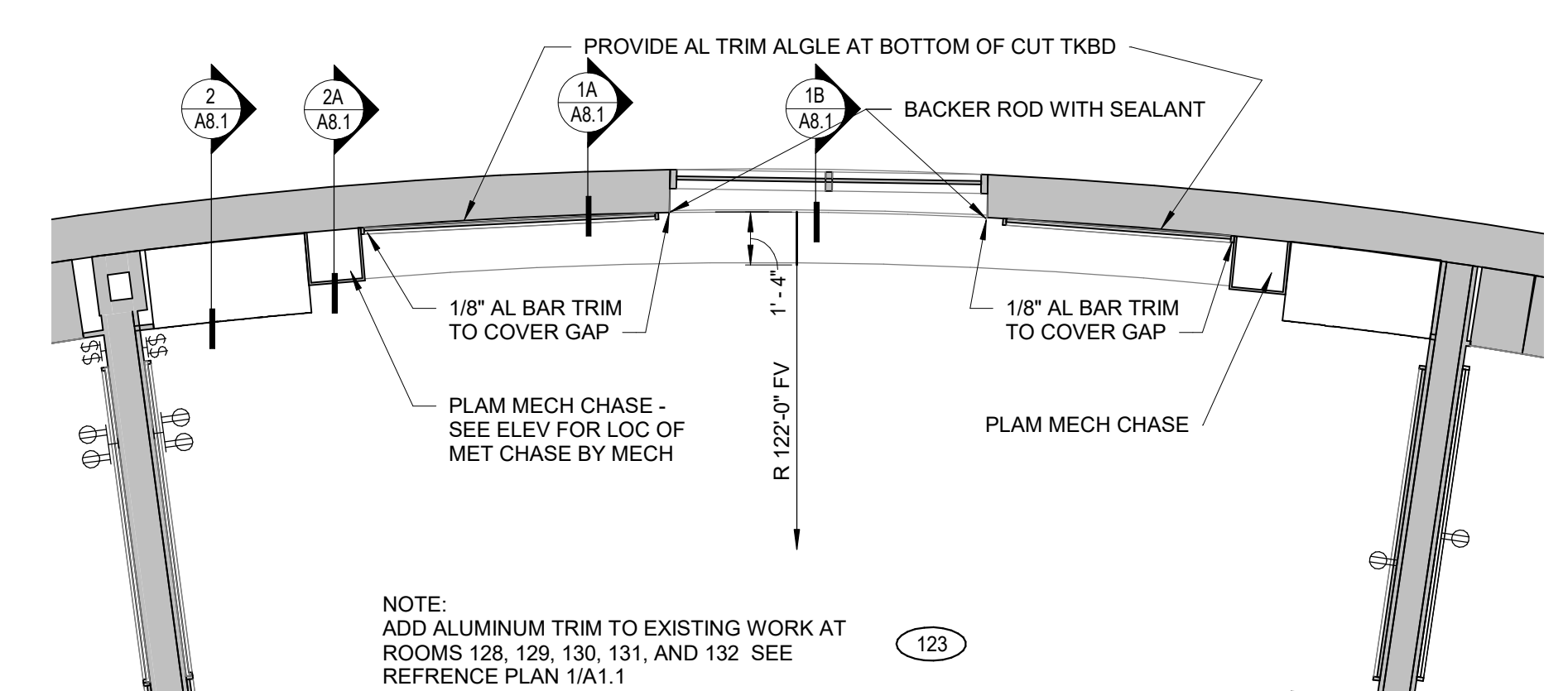
1 ADA SINK SECTION
A8.1 3/4" = 1'-0"



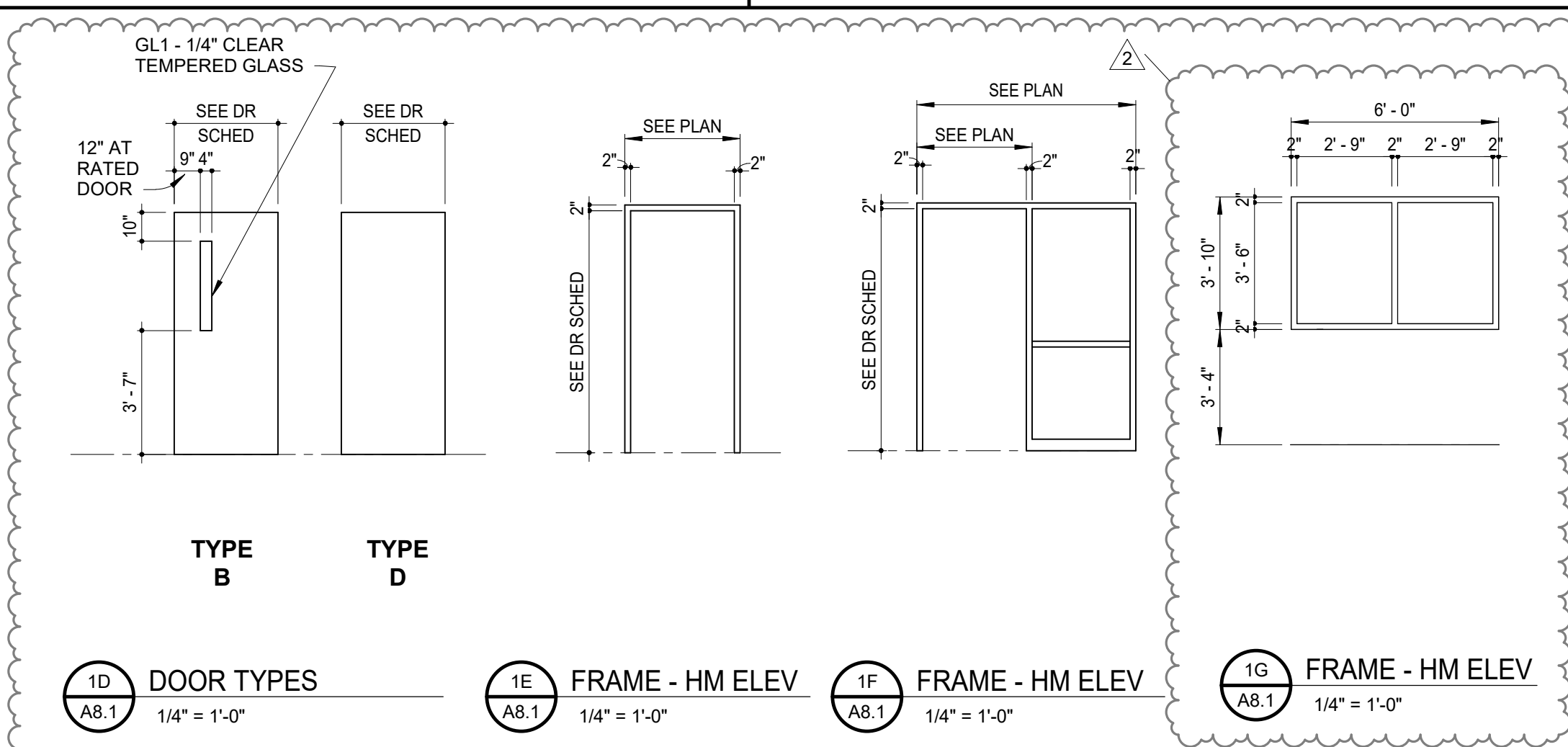
1A SECTION AT DISPLACEMENT TERMINAL UNIT
A8.1 3/4" = 1'-0"



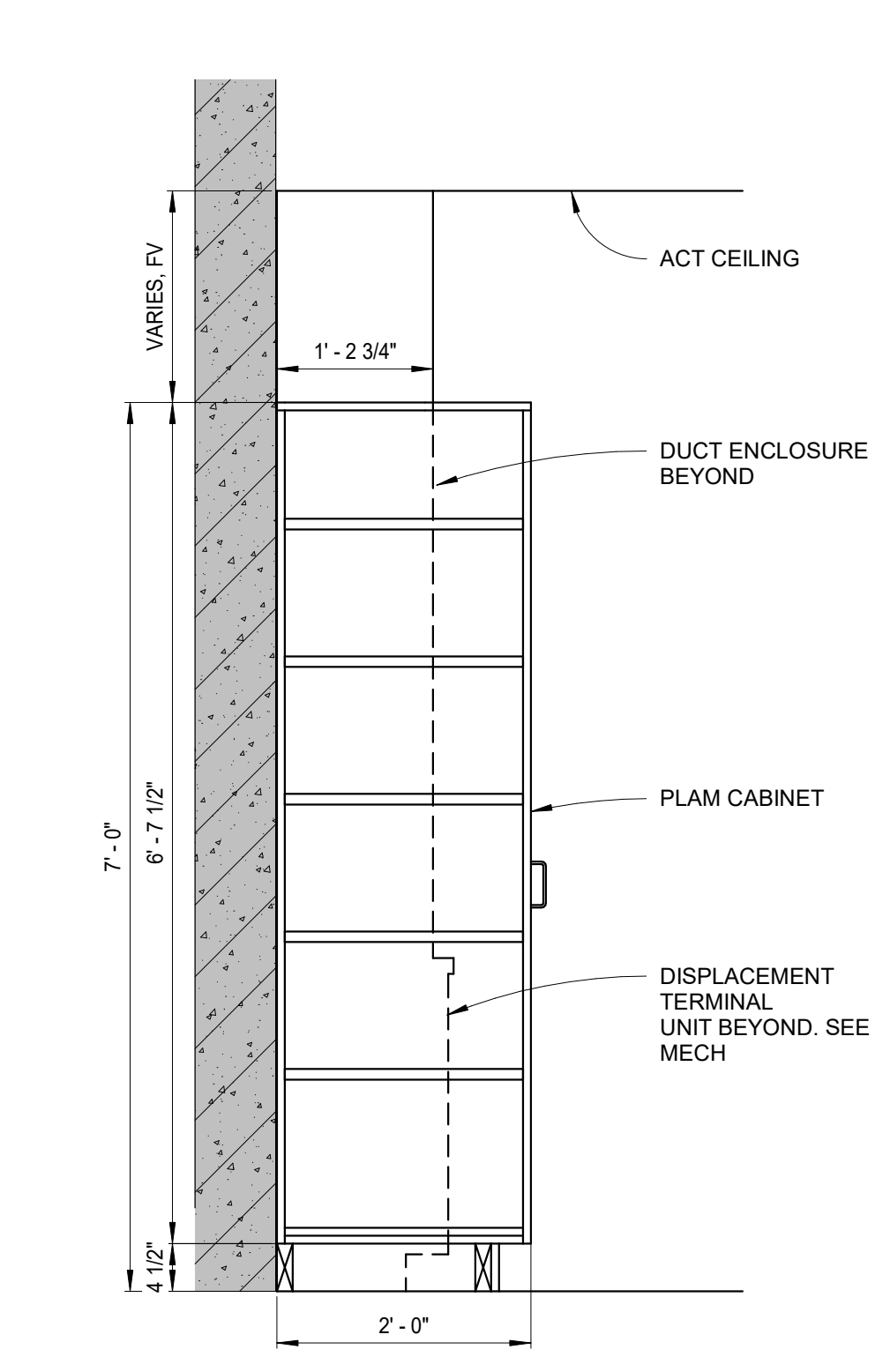
1B SECTION AT DISPLACEMENT TERMINAL UNIT @ WDW
A8.1 3/4" = 1'-0"



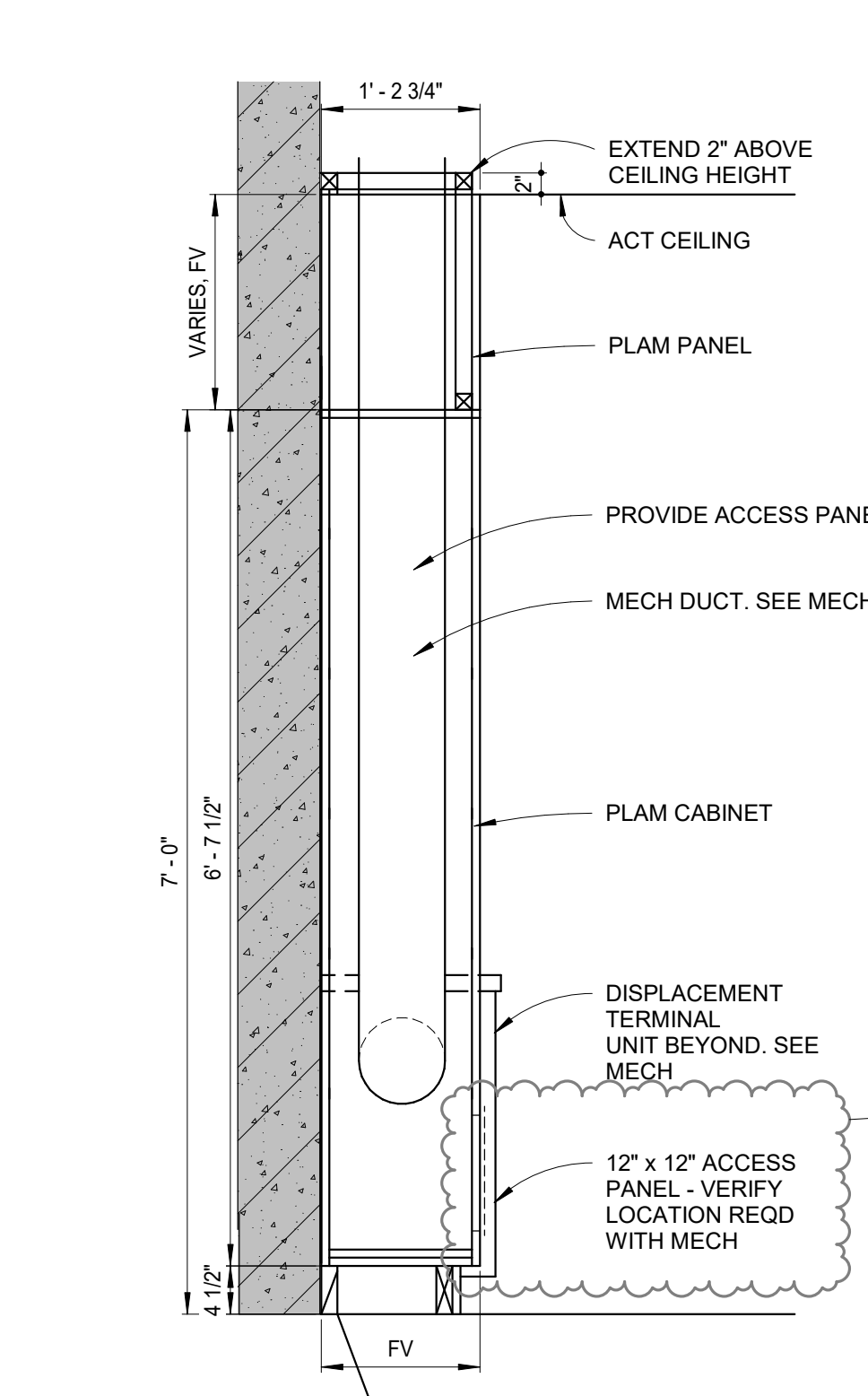
1C TERMINAL DISPLACEMENT UNIT PLAN
A8.1 1/4" = 1'-0"



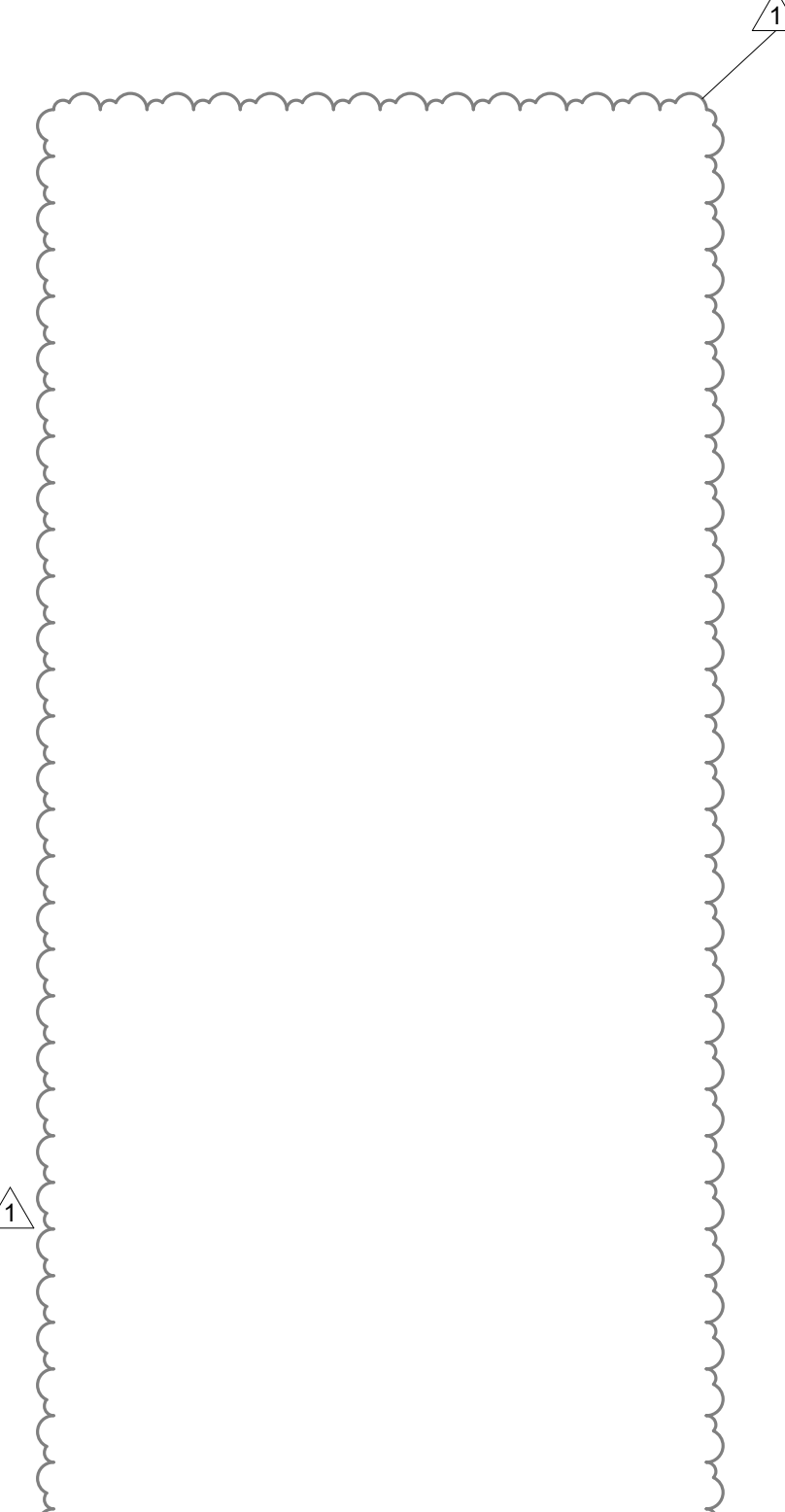
1D DOOR TYPES A8.1 1/4" = 1'-0"
1E FRAME - HM ELEV A8.1 1/4" = 1'-0"
1F FRAME - HM ELEV A8.1 1/4" = 1'-0"
1G FRAME - HM ELEV A8.1 1/4" = 1'-0"



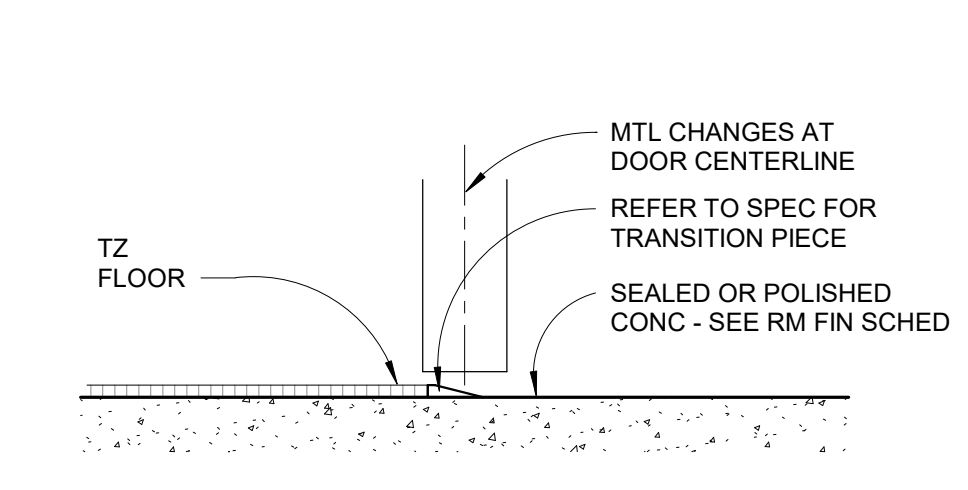
2 TALL CABINET SECTION
A8.1 3/4" = 1'-0"



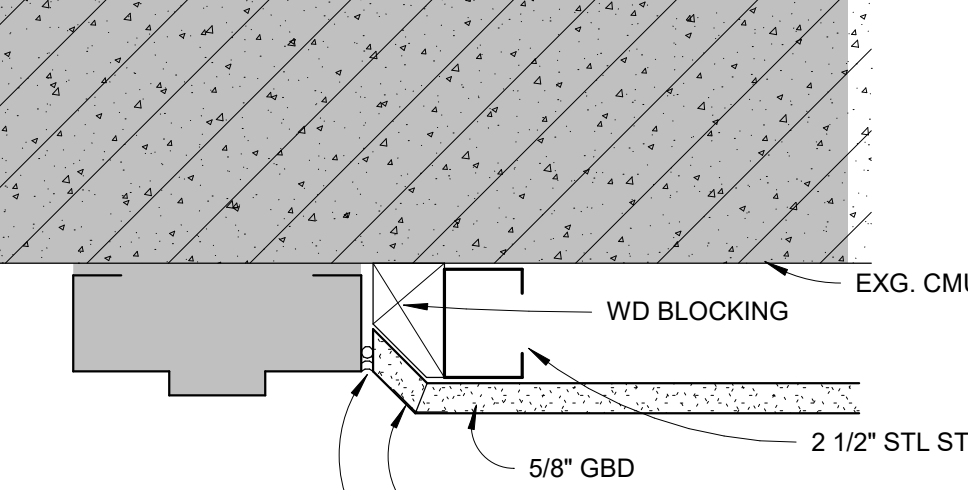
2A DUCT ENCLOSURE SECTION
A8.1 3/4" = 1'-0"



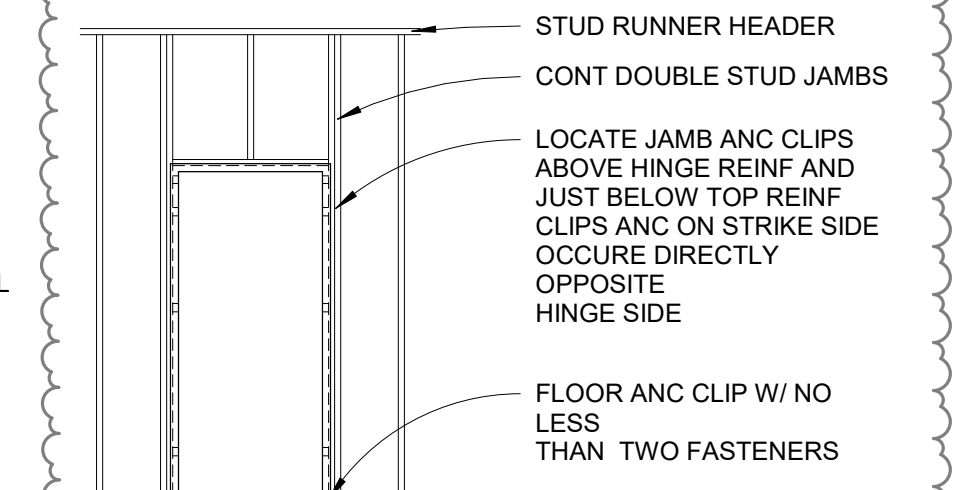
2B NOT USED
A8.1 3/4" = 1'-0"



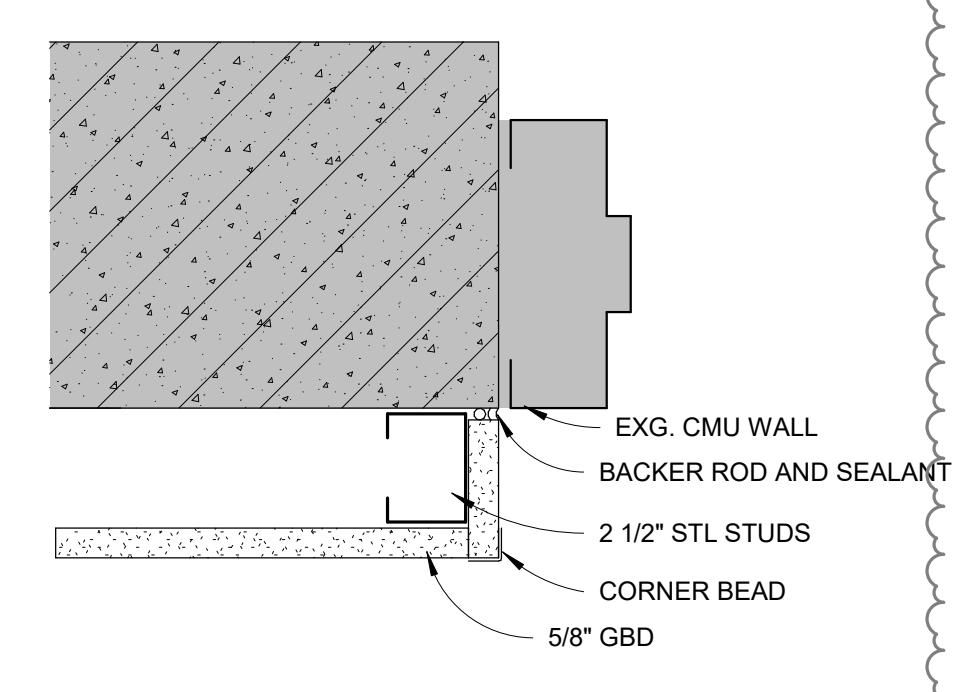
2C TRANS - TZ TO POLISHED CONCRETE
A8.1 3" = 1'-0"



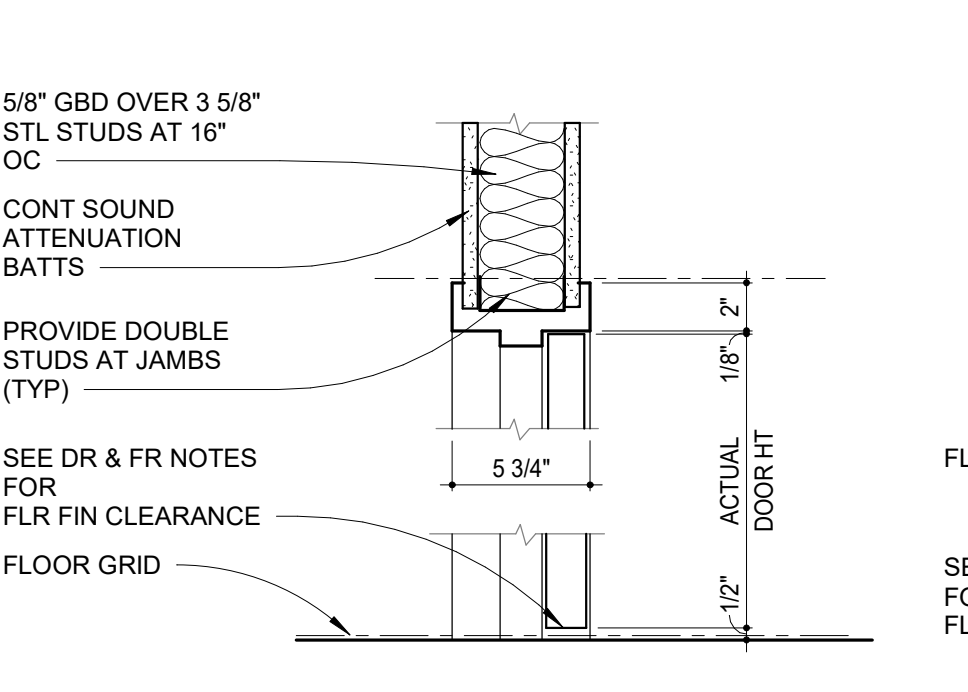
2E GBD RETURN AT HM FRAME
A8.1 3" = 1'-0"



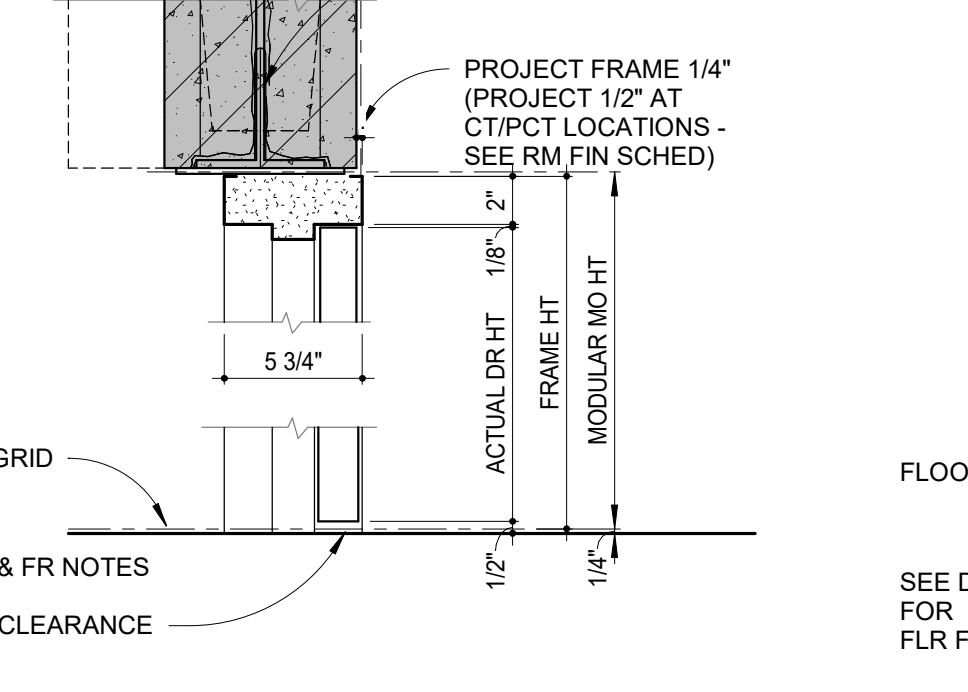
2A STL STUD FRAMING AT HM DOOR FRAME
A8.1 1 1/2" = 1'-0"



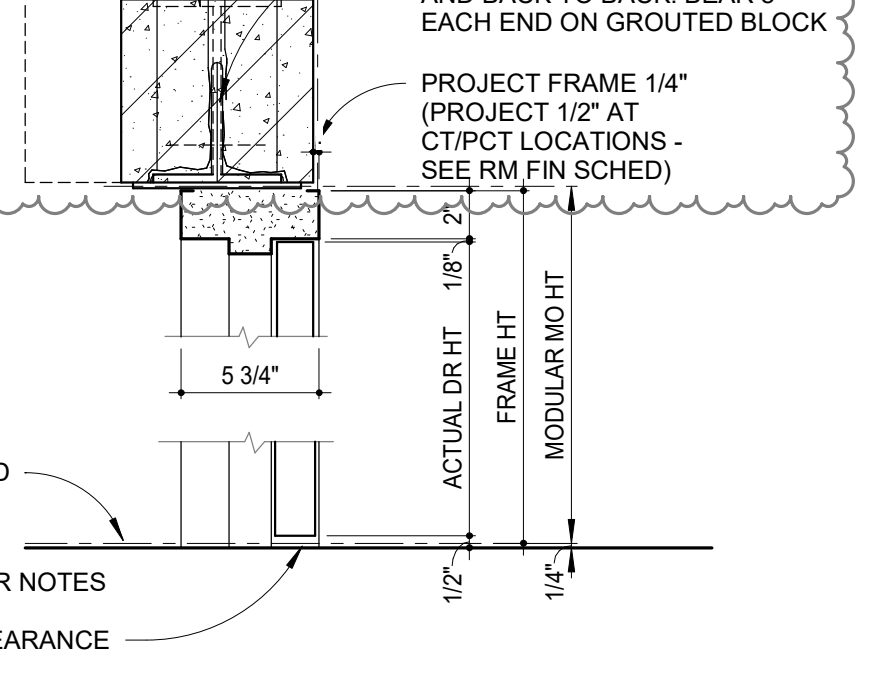
2D GBD RETURN AT CMU WALL
A8.1 3" = 1'-0"



2F HM DOOR FRAME AT STUD WALL
A8.1 1 1/2" = 1'-0"



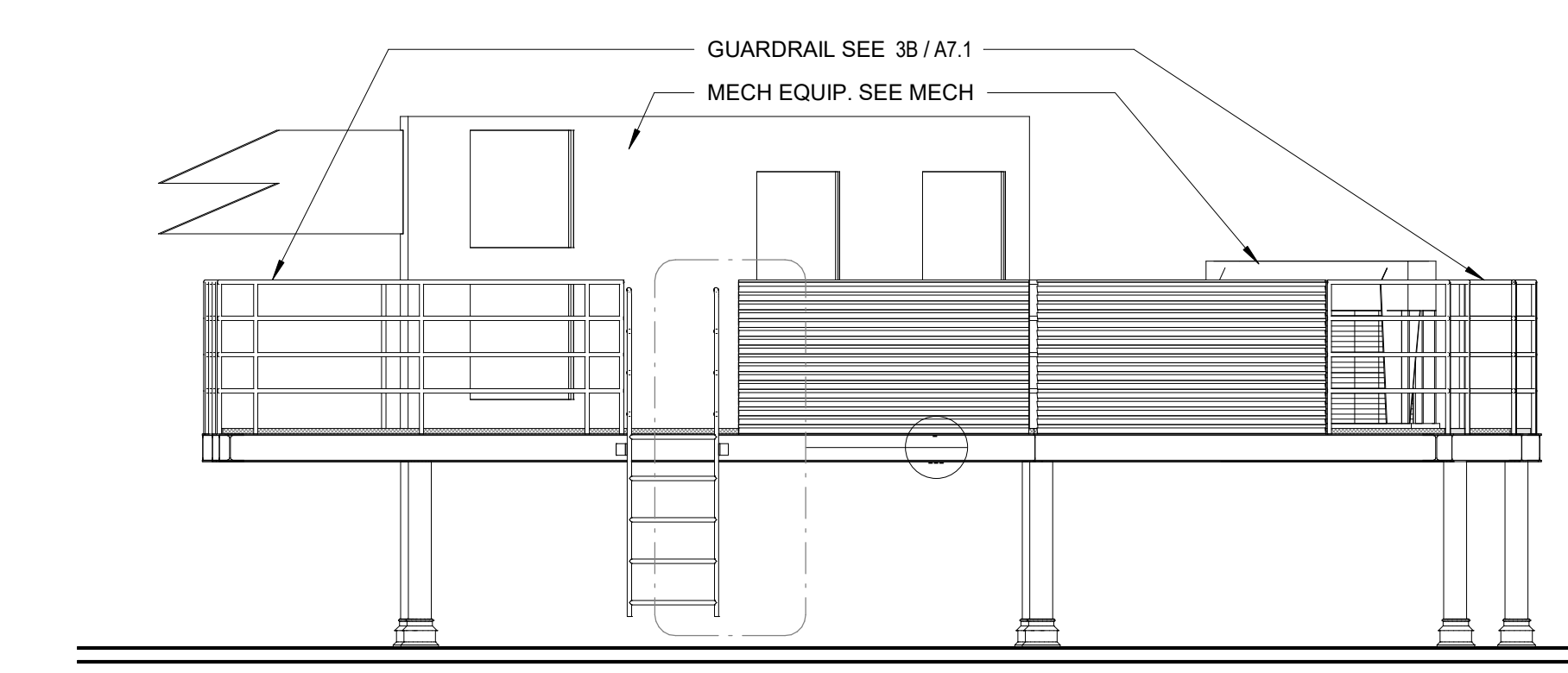
2G HM FRAME AT EXISTING CMU OPENING
A8.1 1 1/2" = 1'-0"



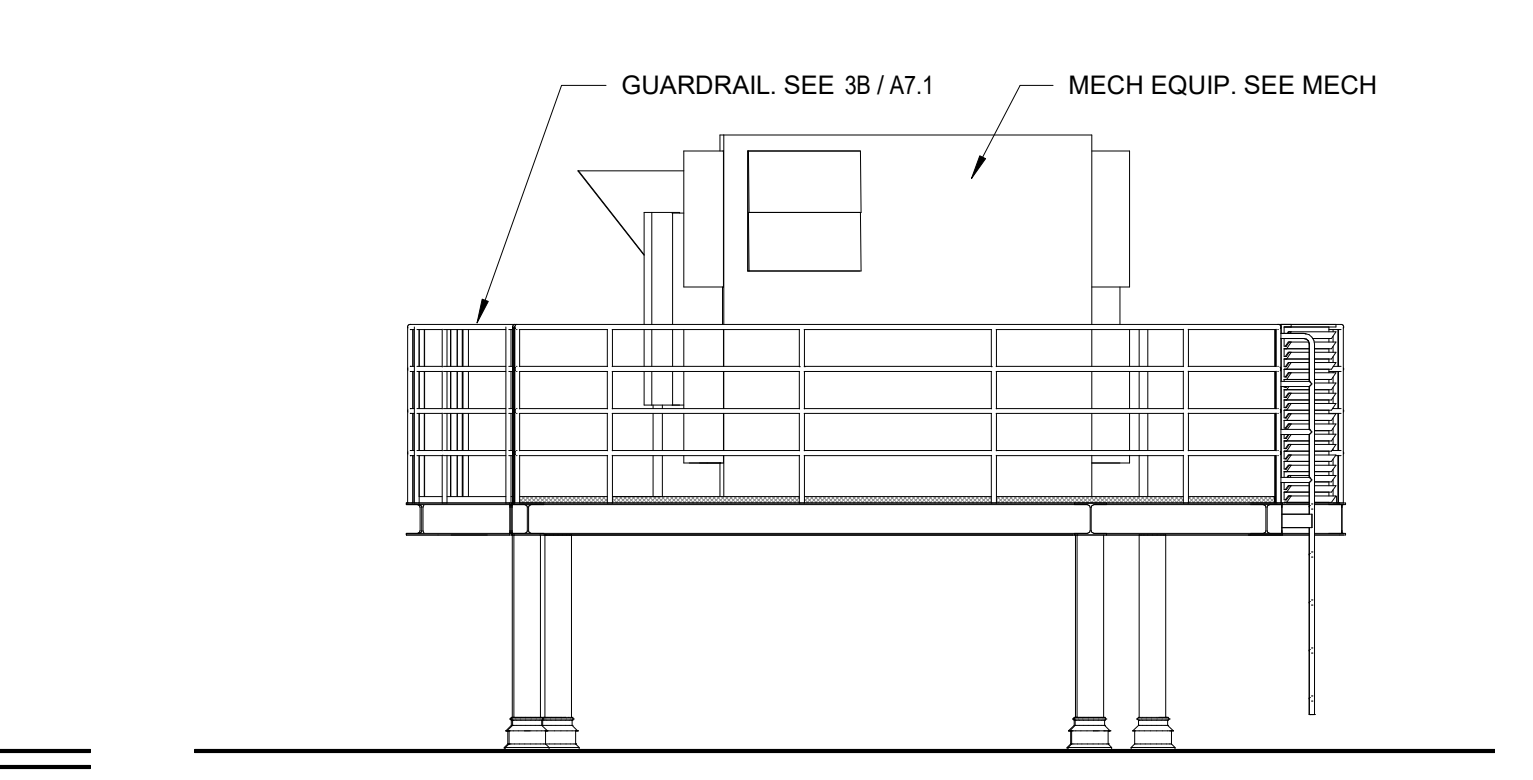
2H HM FRAME AT NEW CMU OPENING
A8.1 1 1/2" = 1'-0"

- HOLLOW METAL DOOR AND FRAME NOTES:**
1. FILL HOLLOW METAL FRAMES WITH MASONRY GROUT (UON).
 2. TYPICAL DOOR BOTTOM CLEARANCE TO BE 1/2" ABOVE FGE (UON).
 3. DOOR SIZE IN SCHEDULE IS NOMINAL. PROVIDE ACTUAL SIZE ACCORDING TO DETAIL.
 4. VERIFY ROOM FINISH SCHEDULE, SECTIONS AND ELEVATIONS. ALL WALL AND FLOOR MATERIALS SHOWN.
 5. REFER TO STRUCTURAL DRAWINGS FOR LINTELS.
 6. REFER TO DOOR SCHEDULE FOR FRAME TYPES.
 7. REFER TO FLOOR PLANS FOR FRAME LOCATIONS IN WALL AND DOOR SWINGS.
 8. JAMB CONDITIONS ARE SIMILAR TO HEAD CONDITIONS (UON).
 9. ALL GLASS AT INTERIOR DOORS AND FRAMES TO BE GL 1 (UON).

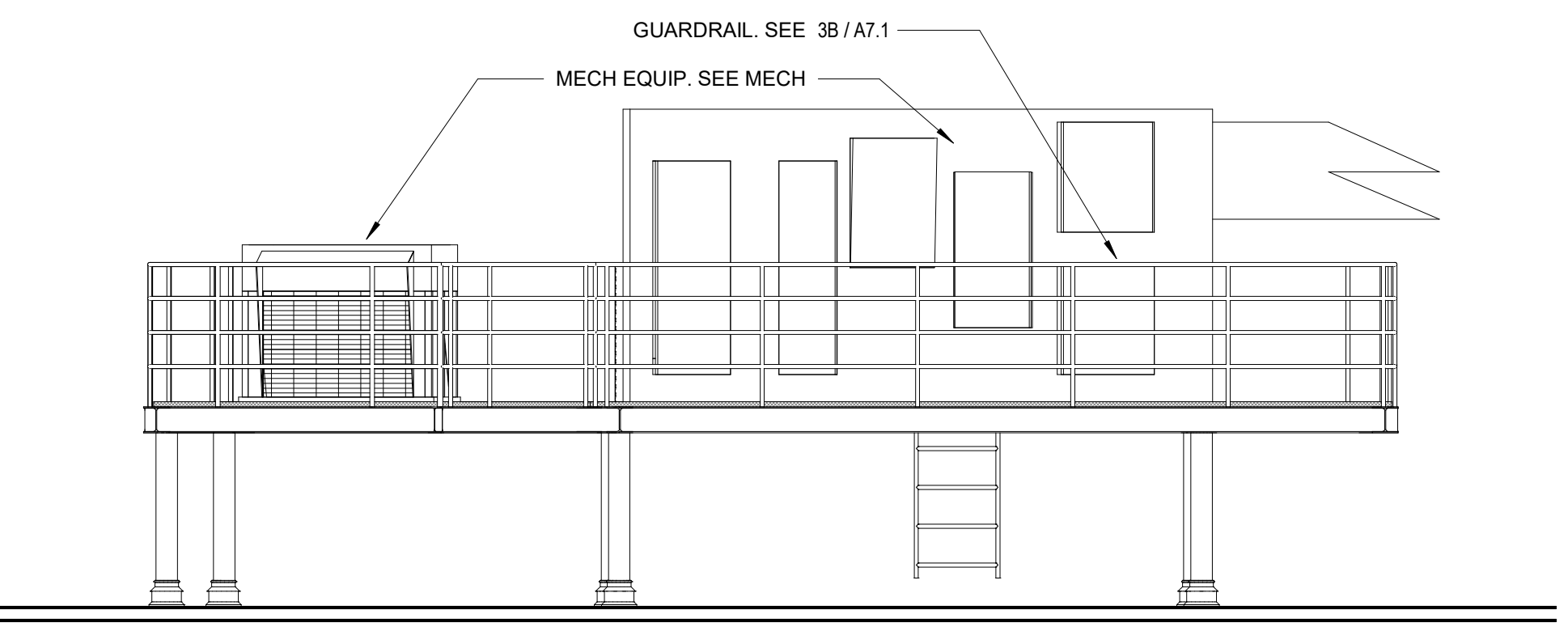
REV NO	DESCRIPTION	DATE
1	Addendum #2	12/17/2021
2	Addendum #3	12/29/2021
3	Addendum #4	1/4/2022



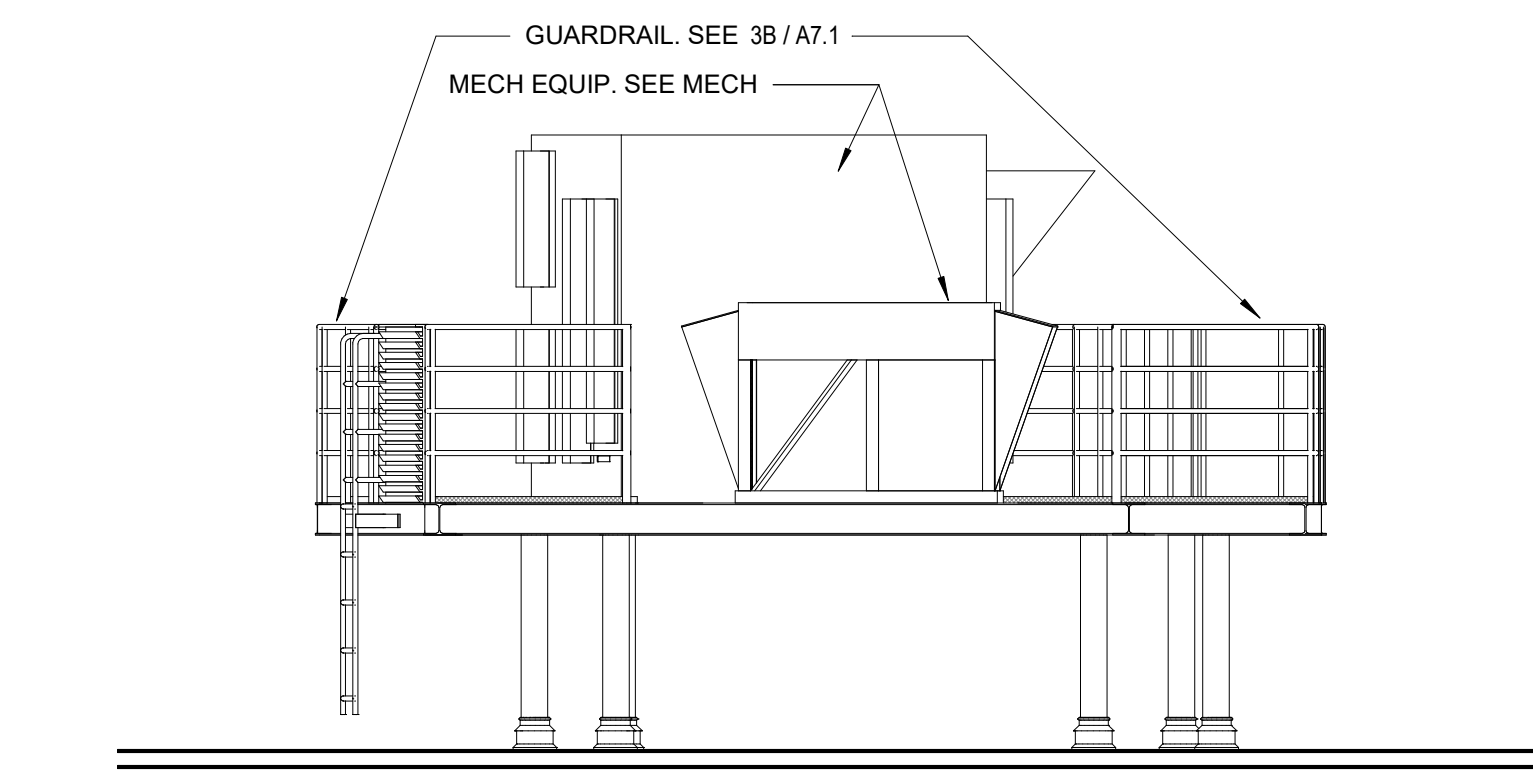
4 MECHANICAL PLATFORM - EAST
A8.1 1/4" = 1'-0"



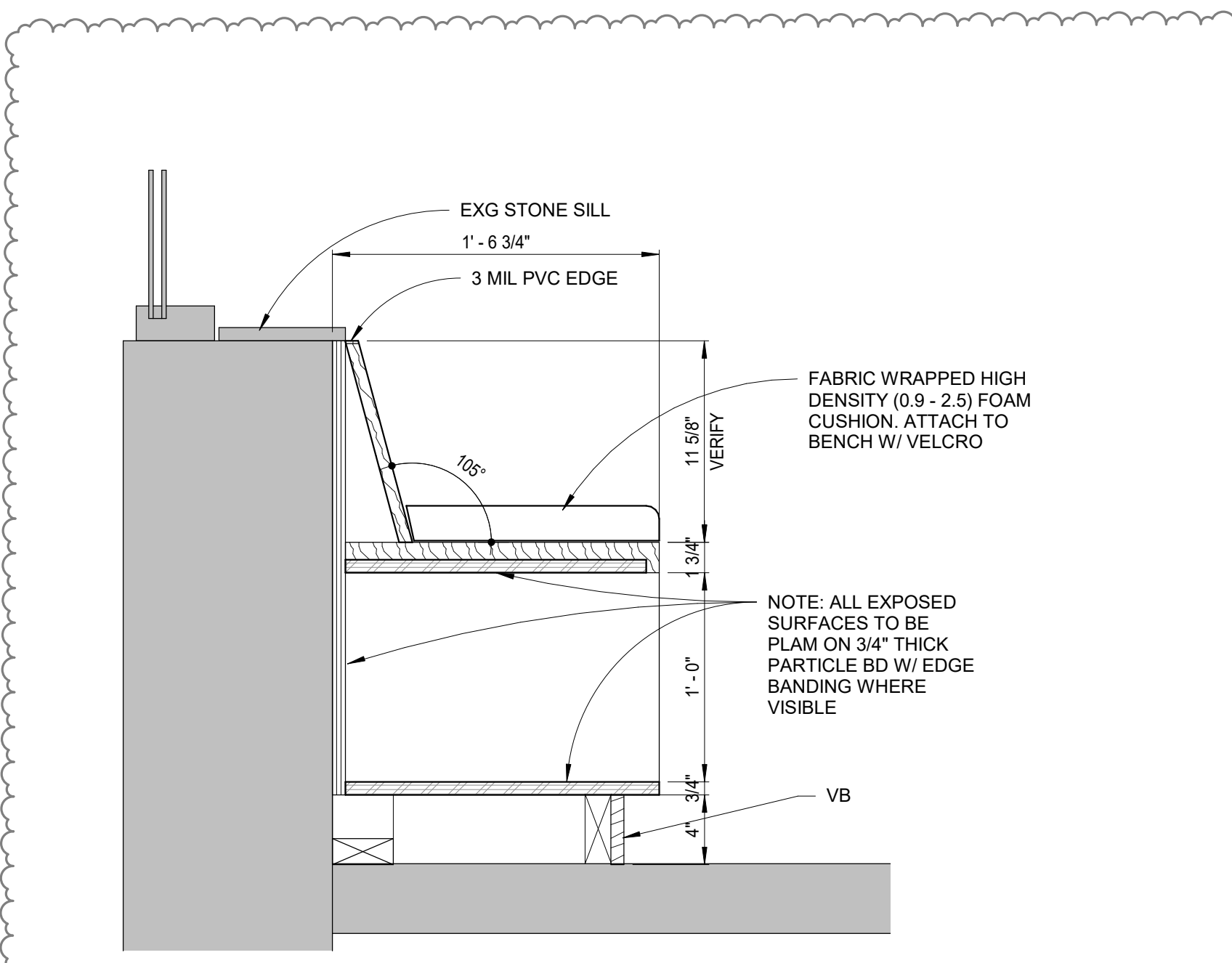
4A MECHANICAL PLATFORM - SOUTH
A8.1 1/4" = 1'-0"



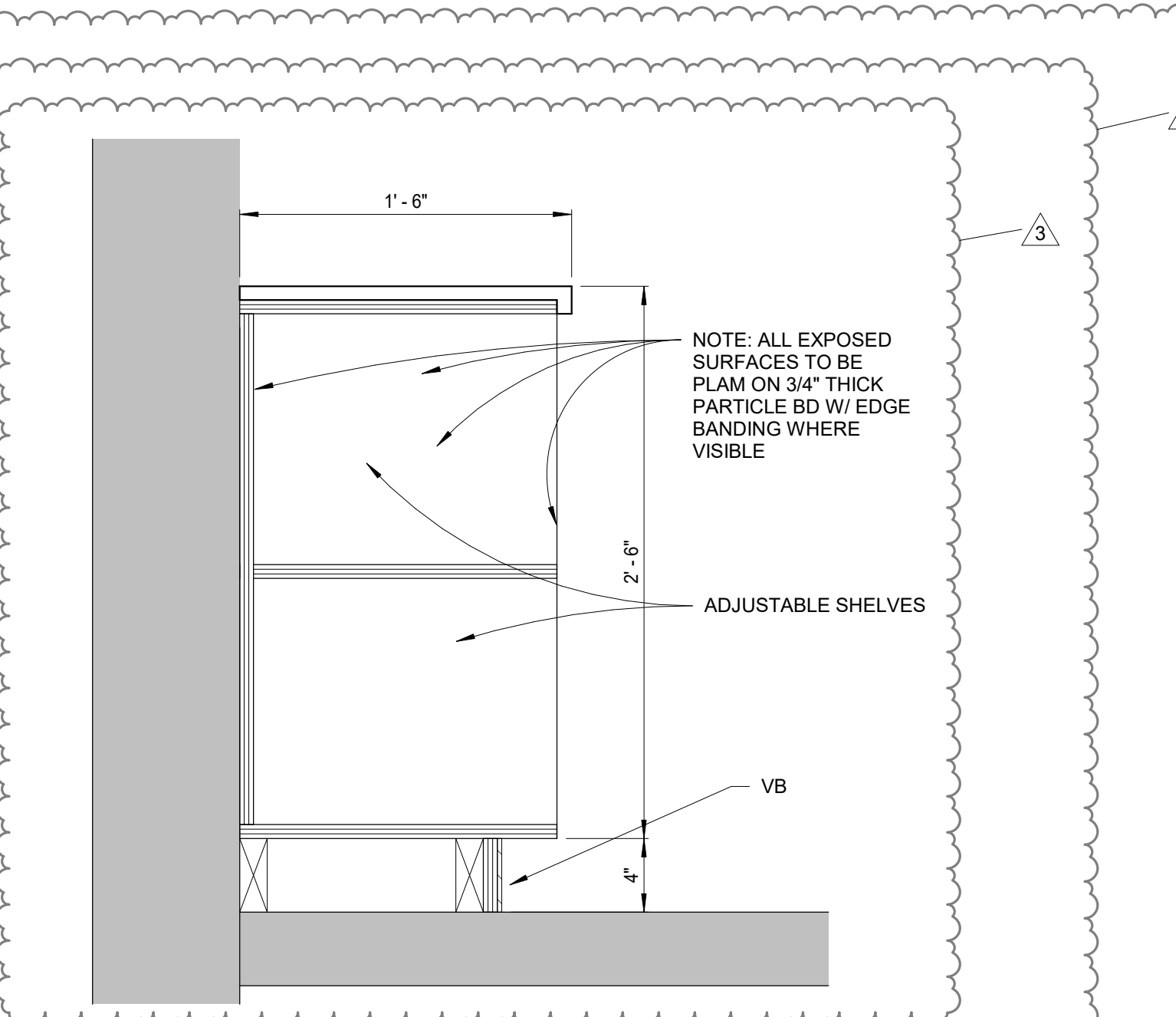
4B MECHANICAL PLATFORM - WEST
A8.1 1/4" = 1'-0"



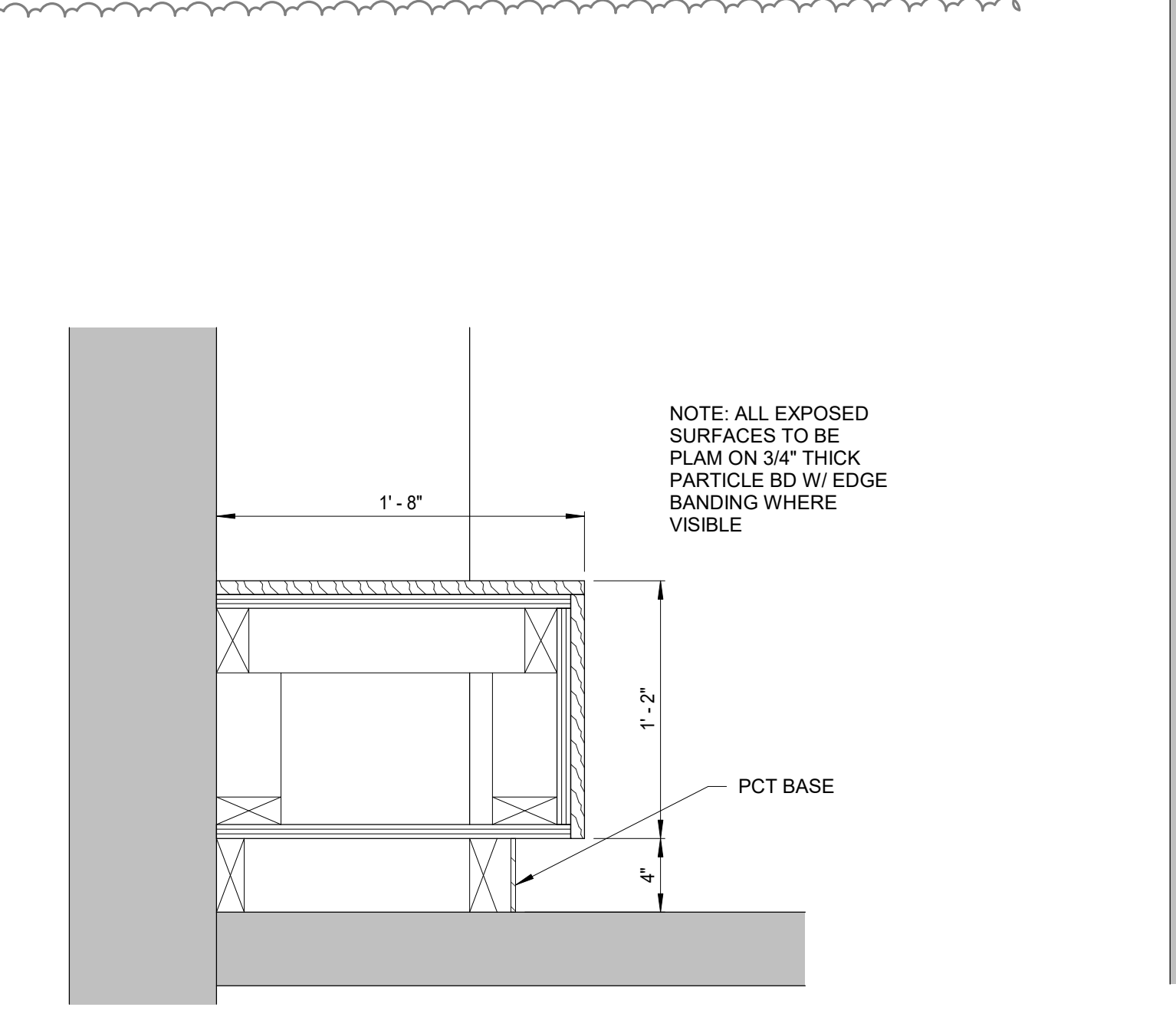
4C MECHANICAL PLATFORM - NORTH
A8.1 1/4" = 1'-0"



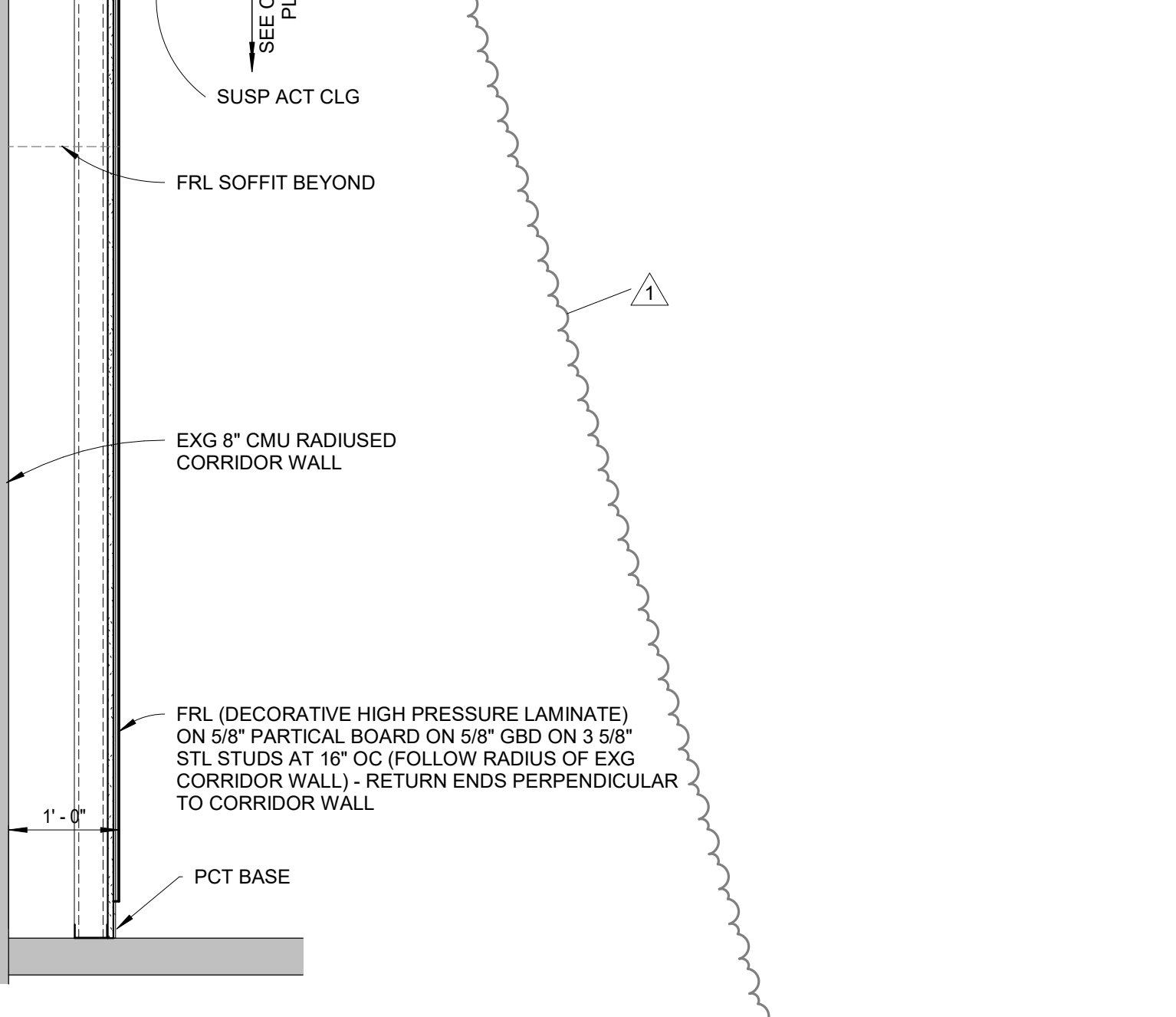
5 WINDOW SEAT DETAIL
A8.1 1 1/2" = 1'-0"



5A BUILT-IN SHELF
A8.1 1 1/2" = 1'-0"



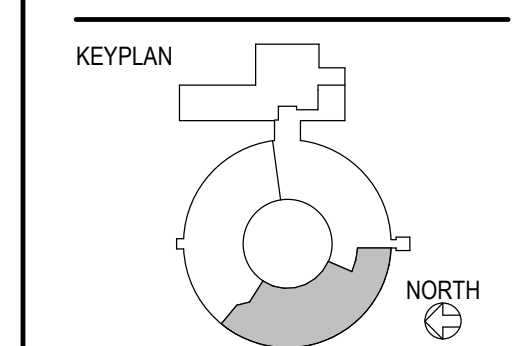
5B CORRIDOR BENCH
A8.1 1 1/2" = 1'-0"



5C GRAPHIC WALL DETAIL
A8.1 3/4" = 1'-0"

**CROOKED LAKE
ELEMENTARY SCHOOL**
HVAC Replacement and Deferred
Maintenance - Phase 3
Anoka-Hennepin Schools I.S.D. No. 11
2939 Bunker Lake Blvd NW
Andover, MN 55304

SIGNATURE / SEAL
I hereby certify that this plan, specification, or report was prepared by me or under my direct supervision and that I am a duly licensed Architect under the laws of the State of Minnesota.
Signature: *David M. Maroney*
David M. Maroney, AIA
Type and printed name
October 27, 2021
Date
20992
License Number



DRAWN BY
MB
CHECKED BY
DMM
ISSUED FOR
CONSTRUCTION DOCUMENTS
ISSUE DATE
OCTOBER 27, 2021
SHEET NAME
MISCELLANEOUS DETAILS

ATSR PROJECT NO.
19039.2
REVISION NO.
3
SHEET NUMBER