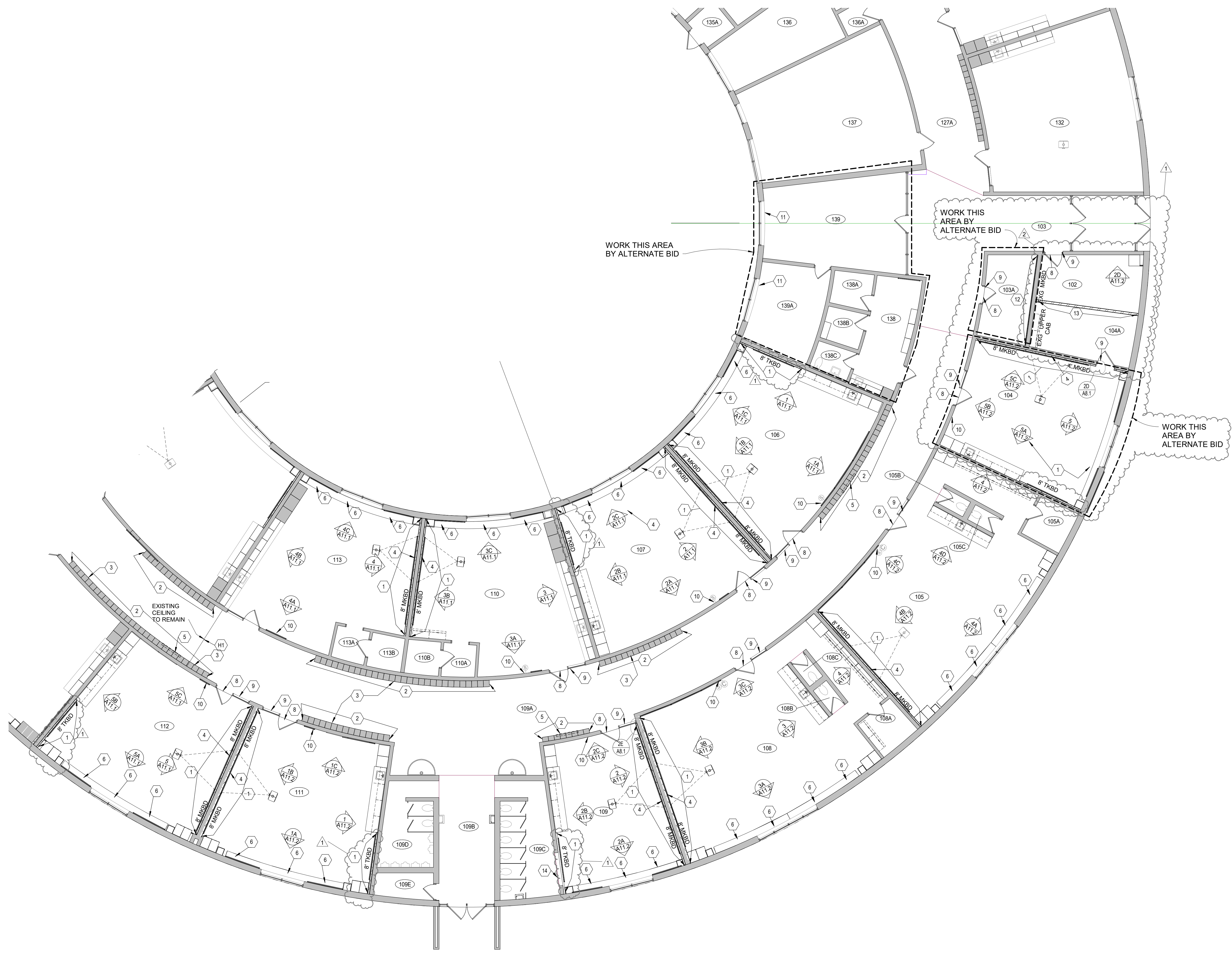


FLOOR PLAN NOTES

- 1 5/8" IMPACT RESISTANT GBD ON 2 1/2" STUD FURRING @ 16" O.C. FROM FLOOR TO 4" MIN ABOVE CEILING, AND 4 1/2" VINYL BASE
- 2 PAINT ENTIRE LENGTH OF SOFFIT - FROM TOP OF LKRS TO CEILING
- 3 REMOVE TACKSTRIP FROM GBD SOFFIT - PATCH WALL FOR NEW PAINTED FINISH
- 4 EXG PROJECTION BOARD INSTALLED BY CONTRACTOR, COORDINATE INSTALL LOCATION WITH OWNER
- 4a NEW PROJECTION BOARD INSTALLED BY CONTRACTOR, COORDINATE INSTALL LOCATION WITH OWNER
- 5 PATCH OPENING AT REMOVED MECH. EQPT. WITH 5/8" GBD ON STL STUDS. PAINT GBD WALL - COORD W/MECH
- 6 DISPLACEMENT TERMINAL UNIT. SEE MECH
- 7 EWC SEE 2F/A8.1 COORDINATE WITH MECH
- 8 PROVIDE TRANSITION BETWEEN TERRAZZO AND POLISHED CONCRETE - SEE SPECIFICATIONS, SEE DETAIL 2C / A8.1
- 9 PAINT DOOR FRAMES BOTH SIDES
- 10 WALL MOUNTED CLOCK ON METAL COVER PLATE BY ELECTRICAL - PAINT PLATE TO MATCH WALL
- 11 PATCH AND PAINT CMU/GBD AS REQUIRED WHERE EXISTING OPENINGS ARE NO LONGER IN USE, COORDINATE WITH MECHANICAL
- 12 PROVIDE 3/8" ADHEARED GBD WALL FINISH FROM TOP OF CT WANSOT (+24") TO 4" ABOVE CEILING
- 13 STL STUD PARTITION - 5/8" GBD EACH SIDE OF 3 5/8" STL STUDS FROM FLOOR TO ROOF DECK - PROVIDE AC BATT INSUL AND AC SEALANT AT PERIMETER AND ALL PENETRATIONS
- 13a STL STUD PARTITION - 5/8" GBD EACH SIDE OF 6" STL STUDS FROM FLOOR TO ROOF DECK - PROVIDE AC BATT INSUL AND AC SEALANT AT PERIMETER AND ALL PENETRATIONS
- 13b STL STUD PARTITION - 5/8" GBD ON 3 5/8" STL STUDS FROM FLOOR TO ROOF DECK
- 14 CONVECTOR IN NEW MAS WALL OPENING - PATCH CT WALL TO MATCH
- 15 EXG RELOCATED LOCKERS
- 16 INFILL OPENING AT REMOVED DOOR AND FRAME WITH CMU TO MATCH EXG - PT



ROOM FINISH SCHEDULE - PHASE 3									
ROOM NO.	ROOM NAME	FLOOR	BASE	WALL	CEILING	NOTES			
SUBJECT SPEC.	PCONC	EXG CT / VB	EXG CMU / GBD	FIN - MTL	FIN - MTL	FIN - MTL			
102	CORRIDOR	EXG TZ	EXG CT	EXG CT	PT / PT	ACT1	5.7		
103	SPECIAL CL	PCONC	EXG CT / VB	EXG CMU / GBD	PT / PT	ACT1	12.3.4		
104	SPECIAL CL	PCONC	EXG CT / VB	EXG CMU / GBD	PT / PT	ACT1	12.3.4		
104A	OFFICE	PCONC	EXG CT / VB	EXG CMU / GBD	PT / PT	ACT1	12.3.4		
105	KINDERGARTEN	PCONC	EXG CT / VB	EXG CMU / GBD	PT / PT	ACT1	12.3.4		
105A	STORAGE	PCONC	EXG CT	EXG CMU	PT	ACT1	12.3.4		
105B	BOYS TOILET	EXG CT	EXG CT	EXG CT / EXG CMU	- / PT	ACT1	2.3		
105C	GIRLS TOILET	EXG CT	EXG CT	EXG CT / EXG CMU	- / PT	ACT1	2.3		
106	CLASSROOM	PCONC	EXG CT / VB	EXG CMU / GBD	PT / PT	ACT1	12.3.4		
107	CLASSROOM	PCONC	EXG CT / VB	EXG CMU / GBD	PT / PT	ACT1	12.3.4		
108	CLASSROOM	PCONC	EXG CT / VB	EXG CMU / GBD	PT / PT	ACT1	12.3.4		
108A	STORAGE	PCONC	EXG CT	EXG CMU	PT	ACT1	12.3.4		
108B	GIRLS TOILET	EXG CT	EXG CT	EXG CT / EXG CMU	- / PT	ACT1	12.3.4		
108C	BOYS TOILET	EXG CT	EXG CT	EXG CT / EXG CMU	- / PT	ACT1	12.3.4		
109	SPECIAL CL	PCONC	EXG CT / VB	EXG CMU / GBD	PT / PT	ACT1	12.3.4		
109A	CORRIDOR	EXG TZ	EXG CT	EXG CT / EXG GBD	- / PT	ACT1	5.7		
109B	CORRIDOR	EXG TZ	EXG CT	EXG CT	-	ACT1	5		
109C	GIRLS TOILET	EXG CT	EXG CT	EXG CT / EXG CMU	- / PT	ACT1	2.3		
109D	BOYS TOILET	EXG CT	EXG CT	EXG CT / EXG CMU	- / PT	ACT1	2.3		
109E	CUSTODIAN	EXG CMU	EXG CMU	EXG CMU	-	VACT	-		
110	CLASSROOM	PCONC	EXG CT / VB	EXG CMU / GBD	PT	ACT1	12.3.4		
110A	CALMING ROOM	PCONC	VB	EXG CMU	-	EXG ACT	-		
110B	LQR	PCONC	EXG CMU	EXG CMU	-	EXG GBD	-		
111	CLASSROOM	PCONC	EXG CT / VB	EXG CMU / GBD	PT	ACT1	12.3.4		
112	CLASSROOM	PCONC	EXG CT / VB	EXG CMU / GBD	PT	ACT1	12.3.4		
113	CLASSROOM	PCONC	EXG CT / VB	EXG CMU / GBD	PT / PT	ACT1	12.3.4		
113A	CALMING ROOM	PCONC	VB	EXG CMU	-	EXG ACT	-		
113B	LQR	PCONC	EXG CMU	EXG CMU	-	EXG GBD	-		
127A	CORRIDOR	EXG TZ	EXG CT / PGT	EXG CT / CT	- / -	EXG ACT	6		
133	MEDIA CENTER	CPT	EXG CT	EXG CMU / GBD	PT / PT	EXG	12.3		
134	EL	PCONC	EXG CT / VB	EXG CMU / CMU	- / PT	EXG	12.3		
135	IMC & WORK	PCONC	EXG CT / VB	EXG CMU / GBD	PT / PT	EXG ACT	12.3		
135B	SPEECH	PCONC	EXG CT / VB	EXG CMU / GBD	PT / PT	EXG ACT	12.3		
135C	MAKERSPACE	PCONC	EXG CT / VB	EXG CMU / GBD	PT / PT	EXG ACT	12.3		
138	NURSE	EXG VCT	EXG VB	EXG CMU	-	EXG ACT	1.8.9		
138A	COT ROOM	EXG VCT	EXG VB	EXG CMU	-	EXG ACT	1.8.9		
138B	COT ROOM	EXG VCT	EXG VB	EXG CMU	-	EXG ACT	1.8.9		
139C	TOILET	EXG CT	EXG CT	EXG CT / EXG CMU	-	EXG ACT	1.8.9		
139	GENERAL OFFICE	EXG CPT / EXG VCT	EXG VB	EXG CMU	-	EXG ACT	1.8.9		
139A	PRINCIPAL	EXG CPT	EXG VB	EXG CMU	-	EXG ACT	1.8.9		

- ROOM FINISH SCHEDULE NOTES:
1. PATCH EXG FINISHES TO MATCH AS AFFECTED BY DEMO
 2. PATCH CT TO MATCH AS AFFECTED BY DEMO
 3. PT ENTIRE ROOM
 4. POLISHED CONC FLOOR PROVIDE TRANSITIONS AT FLOOR MATERIAL CHANGES AS REQUIRED. PROVIDE TRANSITIONS AT PLUMBING CLEANOUTS AS REQUIRED. SEE SPEC FOR INFO.
 5. INFILL WITH CMU OPENINGS ABOVE CEILING IN CMU WALL AT AREAS LEFT OPEN BY MECH DEMO, REFER TO MECH DRAWINGS FOR LOCATIONS
 6. REMOVE AND REINSTALL EXG ACT CEILING AS REQD FOR NEW MECH WORK BY ALTERNATE
 7. PAINT EXG GBD SOFFITS FROM TOP OF LOCKERS TO ABOVE CEILING (PATCH OPENINGS IN EXG GBD SOFFIT LEFT BY MECH DEMO WITH 5/8" GBD AND STL STUDS TO MATCH PAINT)
 8. ALTERNATE BID - PROVIDE PAINTED WALLS ENTIRE ROOM
 9. ALTERNATE BID - DEMO EXISTING ACT CEILING AND PROVIDE NEW ACT CEILING.

DOOR SCHEDULE - PHASE 3									
DOOR NO.	NOMINAL SIZE	DOOR	FRAME	HEAD	DR/FR	NOTES			
		MTL	MTL	TYPE	TYPE	TYPE	TYPE	TYPE	TYPE
134	3'-0" x 7'-0" x 1 3/4"	WD	B	HM	1EA8.1	2HA8.1	1	-	1
135B	3'-0" x 7'-0" x 1 3/4"	WD	D	HM	1FA8.1	2HA8.1	1	-	1.5
135C	3'-0" x 7'-0" x 1 3/4"	WD	D	HM	1EA8.1	2FA8.1	1	-	1

- DOOR SCHEDULE NOTES:
1. PAINT HM FRAMES EA SIDE
 2. NEW DOOR AND FRAME IN EXISTING MASONRY OPENING - VERIFY HEIGHT AND WIDTH.
 3. RELOCATED DOOR AND FRAME IN NEW MASONRY OPENING - SEE DEMO PLAN.
 4. RELOCATED DOOR AND FRAME IN EXISTING STUD WALL OPENINGS - SEE DEMO PLAN.
 5. NEW DOOR AND FRAME IN NEW MASONRY OPENING - VERIFY COURSING HEIGHT.

100-0 First Floor Phase 3
 1/8" = 1'-0"



REVISIONS

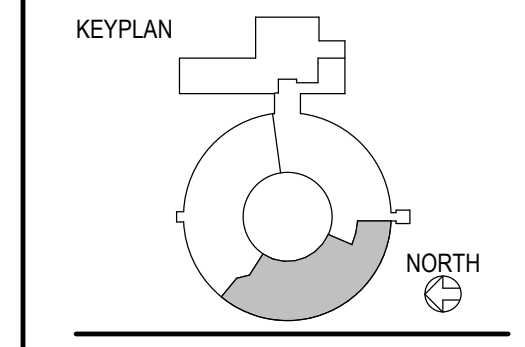
REV NO	DESCRIPTION	DATE
1	Addendum #2	12/17/2021
2	Addendum #3	12/29/2021
3	Addendum #4	1/4/2022

**CROOKED LAKE
 ELEMENTARY SCHOOL**
 HVAC Replacement and Deferred
 Maintenance - Phase 3
 Anoka-Hennepin Schools I.S.D. No. 11
 2939 Bunker Lake Blvd NW
 Andover, MN 55304

SIGNATURE / SEAL

I hereby certify that this plan, specification, or report was prepared by me or under my direct supervision and that I am a duly licensed Architect under the laws of the State of Minnesota.

David M. Maroney
 Signature
 David M. Maroney, AIA
 Typical or printed name
 October 27, 2021
 Date
 20992
 License Number



DRAWN BY
MB

CHECKED BY
DMM

ISSUED FOR
CONSTRUCTION DOCUMENTS

ISSUE DATE
OCTOBER 27, 2021

SHEET NAME
FIRST FLOOR PLAN

ATSR PROJECT NO.
19039.2

REVISION NO.
3

SHEET NUMBER